

# THE MORNING *LaTTe*

LaTTe's NEWSLETTER - MAY 2024

The Learning and Teaching Technologies Advisory Group (LaTTe) provides connectivity between Senate Education Committee, ITDS, schools and academic units to identify and promote technologies that facilitate learning and teaching at Western.

Welcome to our monthly newsletter, and if you would like to know more or get involved, contact your [LaTTe representative](#).



## Immersive Technology in Teaching and Learning

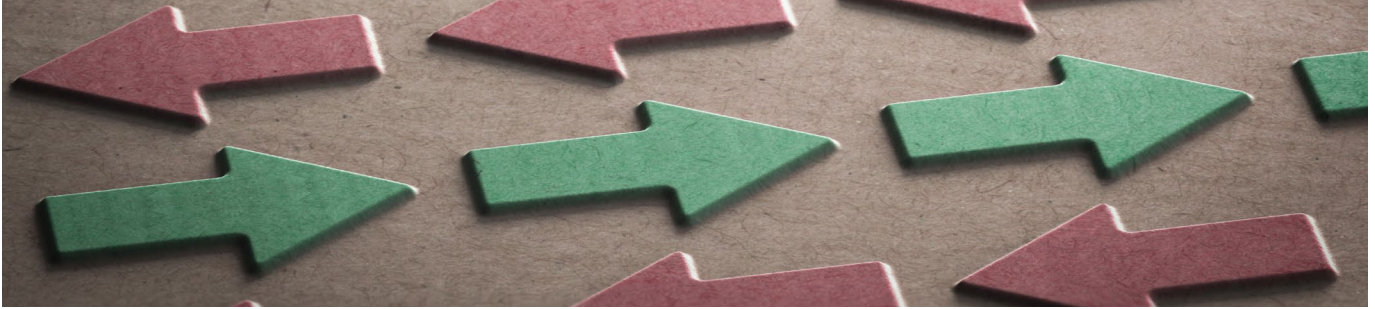
Technology provides educators with opportunities to deliver course content in new and engaging ways. 360° photo and video is just one branch of immersive technology gaining traction in education in recent years, and it's never been more accessible than it is today.

The availability of cost effective and user friendly 360° cameras has gone some way to lowering the barrier to entry, and we've seen more and more educators implementing rich experiences into their teaching practice as a result, but that doesn't mean quality educational 360° content is easy to produce.

To set you on the right path, Technology-Enabled Learning has developed a short course called 360 Fundamentals. The course is housed on [WesternX](#) with an accompanying video playlist on [Panopto](#),

and begins by unravelling some basic definitions of concepts and terminology surrounding immersive technology. You will also see exemplars from around the University: academics like you, championing the use of 360° content in a range of unique ways, and with a range of different learning outcomes. For the remainder of the course, you will learn about the equipment required to produce your own 360° content, how to best use that equipment, and finally how to edit and publish your 360° captures.

The 360° Fundamentals short course is open for self-enrolment now, and builds on TEL's digital uplift initiatives like the existing [Video Production Fundamentals](#) short course. [Enrol now](#).



## Curriculum Management Program

Shayne Simpson (Project Manager) and Mirella Gordon (Practice Adoption Manager) from ITDS walked through the processes planned to transform our learning ecosystem as part of the Curriculum Management Program (CMP). This project links directly to the Learning Ecosystem project and will be led by the same team.

The major concepts presented to LaTTe included:

- ▶ Value Chains: capturing how the institution generates value i.e., through Teaching and Learning and Research.
- ▶ Core Capabilities: directly support the Value chains.
- ▶ Enabling Capabilities across the value chains and supporting the core capabilities and value chains.
- ▶ Digital Acceleration (DX) is targeting projects that will directly and indirectly impact these capabilities.

The next significant piece of work for this team is the completion of Customer Journey Mapping which will provide insights into both the Curriculum project and the Learning Ecosystem project.

Western will engage a consultancy group with relevant resources, capacity, and experience to assist the University in end-to-end journey mapping for students and learners. Activities will be classified by Capability (CAUDIT Business Reference Model), Service and User and impacted system or artefact.

Expected insights include:

- ▶ What are users experiencing now and what services do they use?
- ▶ What users state they need.
- ▶ What users expect the service to have.
- ▶ What users are required to do because of policies or organisational constraints.
- ▶ What the users are really trying to do.

The Customer Journey Mapping exercise will form the basis of subsequent activities in the developing of the renewed Learning Ecosystem.

For more information about this initiative, please reach out to [Shayne Simpson, Project Manager](#).

---

## Keen to know more?

Contact your **LaTTe representative** or visit [LaTTe's webpage](#).

**LATTE**