



Commonwealth Prac Payment (CPP)

Your journey from application to payment



FINANCIAL SUPPORT

Helps eligible students manage living costs during mandatory placements.



PAYMENT RATE

Approx. \$338.60 per week (2026)
Paid weekly during your placement.



ELIGIBLE COURSES

Teaching, Nursing, Midwifery, Social Work and other approved courses.



MANDATORY PLACEMENT

Your placement must be a required part of your course (usually 30+ hours per week).

ARE YOU FINANCIALLY ELIGIBLE? (You only need to meet ONE option)



OPTION 1

You receive Centrelink support (e.g. Youth Allowance, Austudy, ABSTUDY or Parenting Payment).

OR



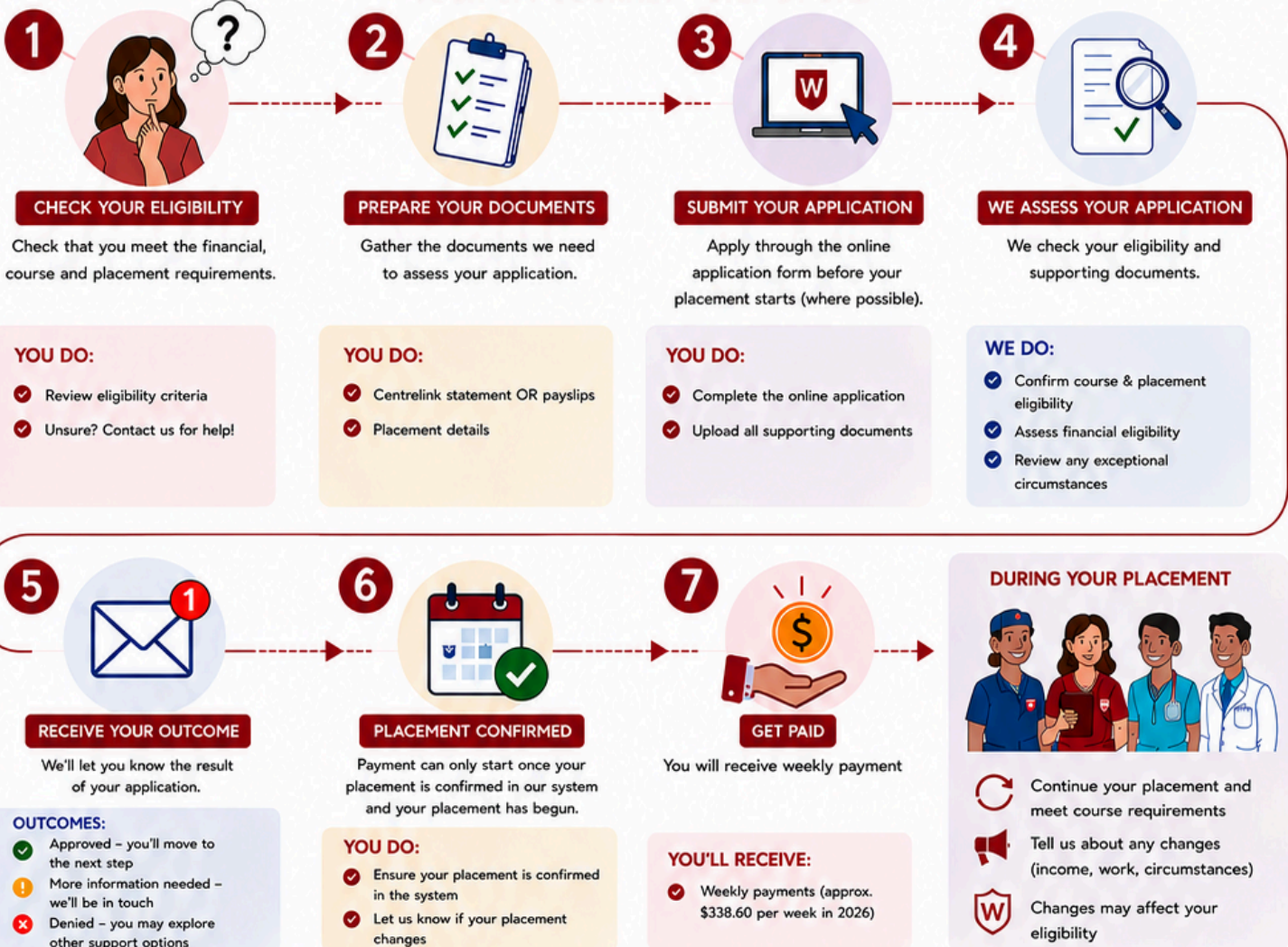
OPTION 2

Worked an average of 15+ hours per week over a 4-week period during your normal study (outside placement), with a weekly income of no more than \$1,536.37 (before tax). This threshold includes employment income and any State, Territory, or Commonwealth scholarships received during the same period.

DENIED IF:

- You earn above \$1,536.37 per week (before tax)
- You work less than 15 hours per week over a 4-week period
- You do not meet course or placement requirements

YOUR CPP JOURNEY - STEP BY STEP



NEED HELP?

Visit: westernsydney.edu.au/scholarships/important-dates/cpp
 Email: scholarships@westernsydney.edu.au
 Call: (02) 9852 5501

