

PRIVACY BY DESIGN

Conducting Privacy Impact Assessments (PIAs)

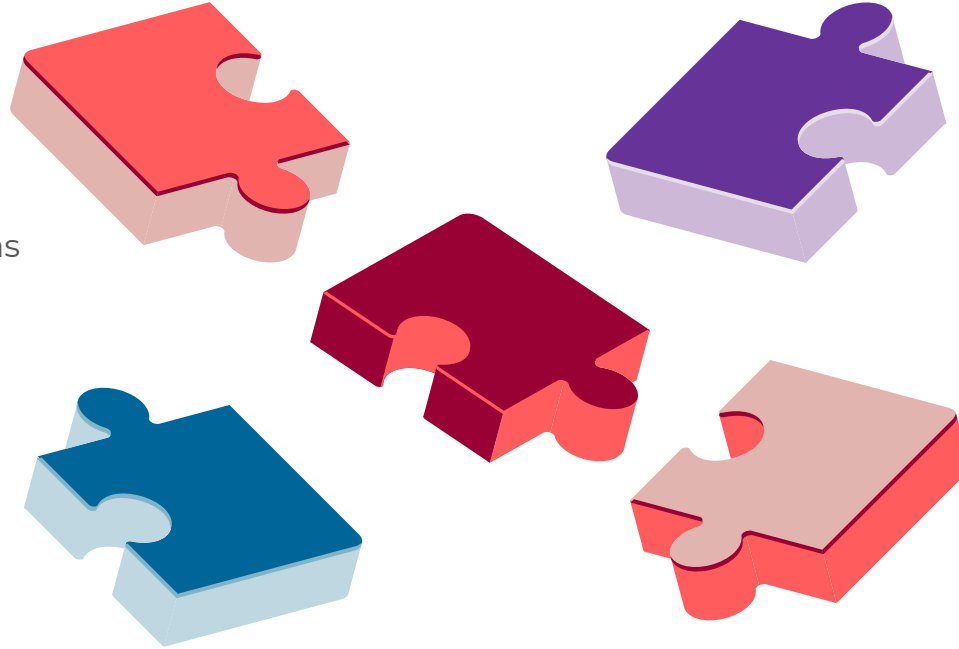
Common issue

Privacy is often considered too late, leading to reactive fixes, higher breach risk, and compliance gaps.

Privacy by Design embeds privacy from the outset - not as an afterthought.

Required Safeguards

- Undertake a PIA early in planning
- Identify and mitigate privacy risks early
- Follow PIA procedures and governance



🔑 Key Insight 🔑

Since Jan 2026, 24 PIAs were completed - more than double last year - showing stronger early engagement and a shift to Privacy by Design.

When PIAs are required

- New systems, software, or tools using PI
- New or changed processes involving PI
- AI or automated decision-making using PI
- Changes to how existing PI is handled
- Where required by an RCD

Why this matters

PIAs support compliance by identifying and managing privacy risks before implementation.