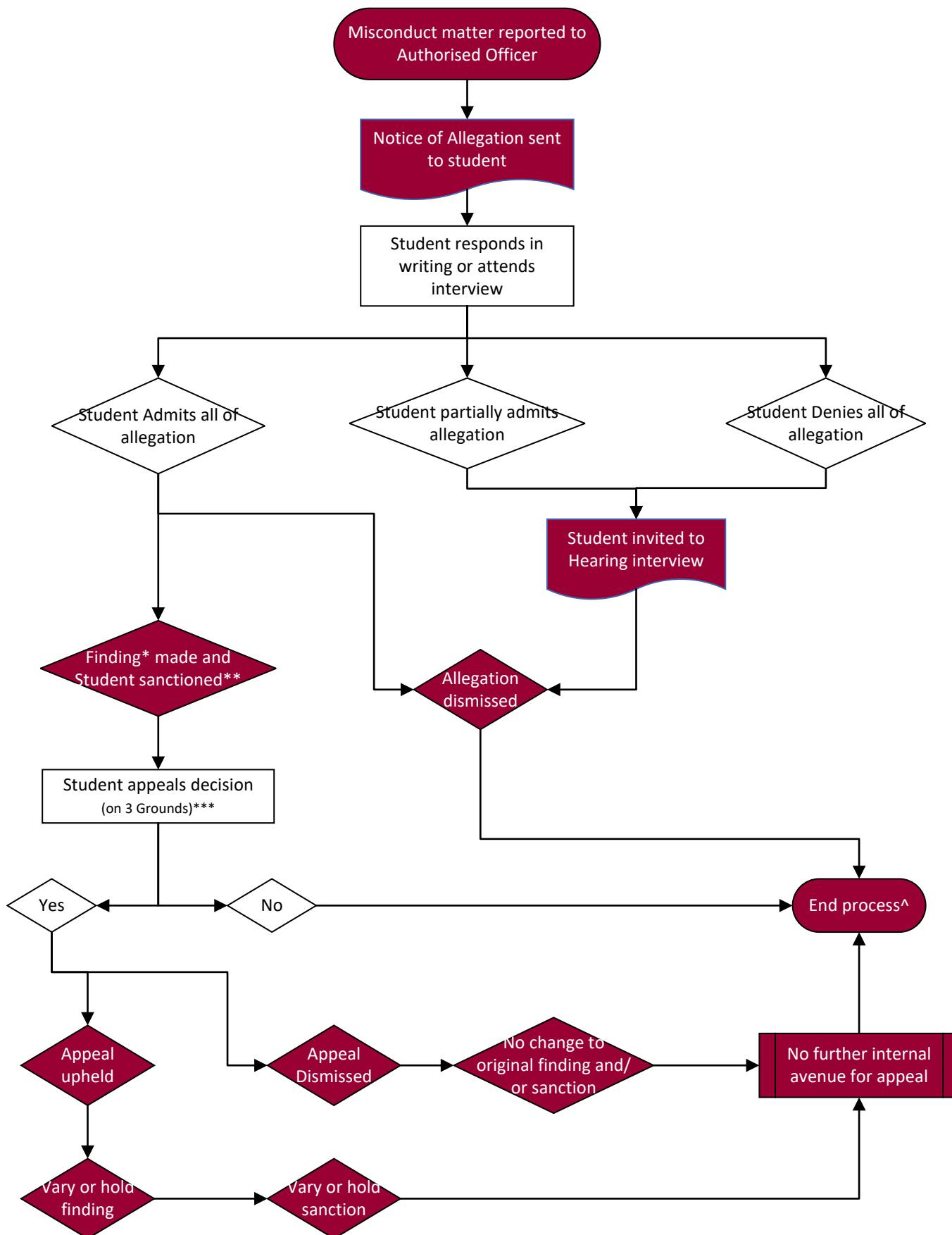


Student Misconduct Process Flowchart (for students)



* Finding is the allegation of misconduct being sustained.

** Sanction is an outcome of misconduct and may range from a reprimand to expulsion depending on the severity of the matter.

*** 3 Grounds can be found in clause 47 of the Student Misconduct Rule.

^ Students may have to action sanctions and remedial measures as outlined in the notices.