



WESTERN SYDNEY
UNIVERSITY

Careers in Focus

Kelly Whitney

**Associate Director, Careers, Talent, and
Organisational Success**





CAREERS

Careers in Focus

Kelly Whitney

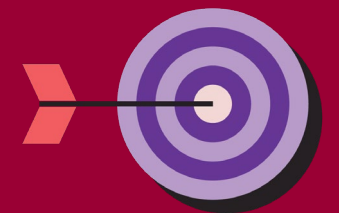
Associate Director, Careers, Talent & Organisational Success





Today...

1. Insights (predictions) about the future of work
2. Career decision making
3. Approach employability at Western



Trends impacting the world of work

- Post-pandemic labour market
- Changing relationship learning and work
- Non-linear career
- Increasing precarity in work
- Digital disruption – technology / automation



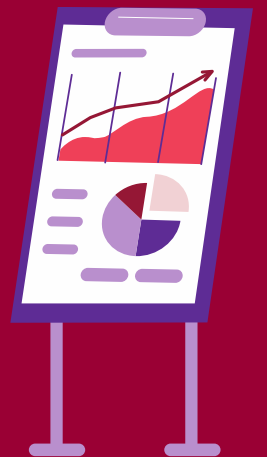
THE EVOLUTION OF WORK

1980 2015



Four fastest growing industries

- Health care and social assistance
- Accommodation and food services
- Professional, scientific and technical services
- Education and training



Skills in Demand – 4C's

- Care
- Computing
- Cognitive abilities
- Communication



Young People & Career Decision Making

- Career concentration - 'You can't be what you can't see'
- Labour market relevance
- Alignment education and occupational choices





Boys

2018	
Occupation	%
Engineers	7.7
Business managers	6.7
Doctors	6.0
ICT professionals	5.5
Sportspeople	4.9
Teachers	4.6
Police officers	4.0
Motor vehicle mechanics	2.8
Lawyers	2.4
Architects	2.2
	46.8

Girls

2018	
Occupation	%
Doctors	15.6
Teachers	9.4
Business managers	5.0
Lawyers	4.6
Nursing and midwives	4.5
Psychologists	3.7
Designers	3.0
Veterinarians	2.8
Police officers	2.3
Architects	2.1
	52.9

Western Employability Strategy

- Broaden lens potential
- Map employability trajectories / establish thresholds
- ‘Think, Feel and Do’ at each stage
- Technology-enabled, career decision making support at scale

