

**WESTERN SYDNEY
UNIVERSITY**



Centre for
Smart Modern Construction

c4SMC INTER-UNIVERSITY ACADEMIC ROUND TABLE

14th November 2018

Onsite to Offsite

Dr Tharaka Gunawardena

Research Fellow

CAMP.H, Department of Infrastructure Engineering

The University of Melbourne



Introduction to CAMPH Activities



Innovation in design and enhanced end user experience



Advanced building systems and assembly

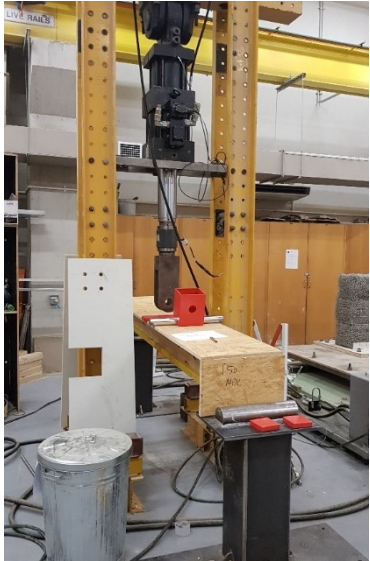


Novel materials and composite structures



Supply chain and financing innovation

CAMP.H Achievements



PROJECTS
IN MY AREA

KEY
RESOURCES

ABOUT
US

CONTACT
US



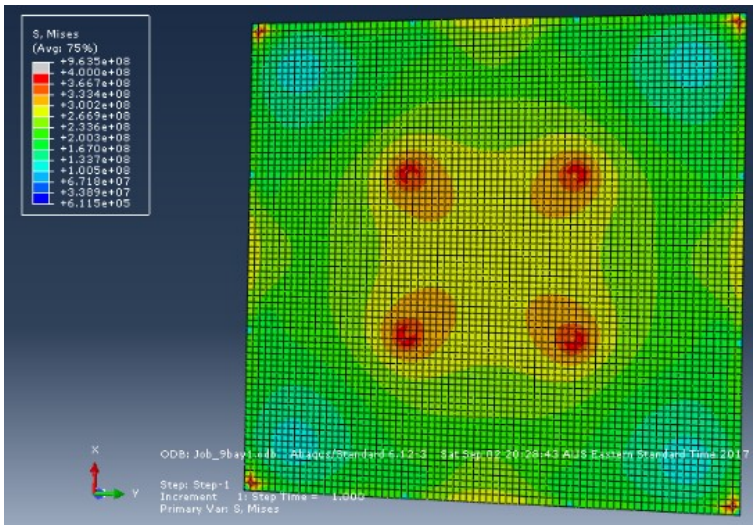
Permanent Modular School Buildings Program

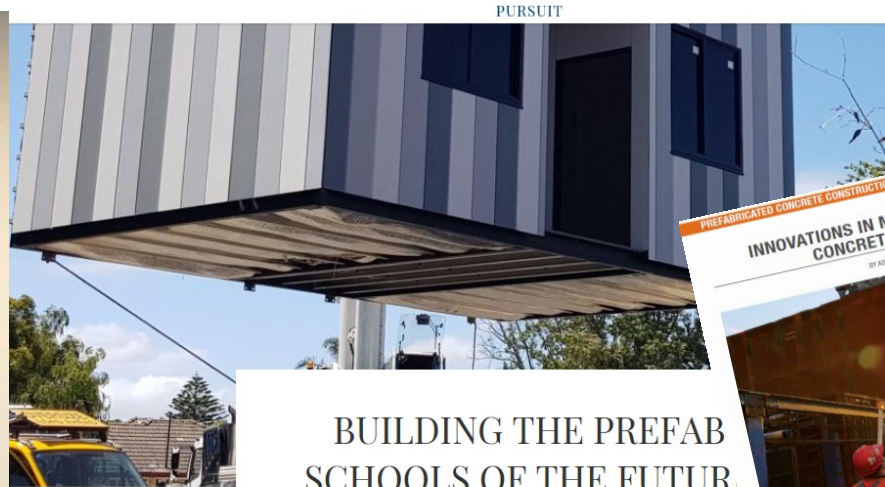


Southmoor Primary School



Mount Waverley Heights Primary
School





BUILDING THE PREFAB SCHOOLS OF THE FUTURE

Prefab technology is driving the development of new classroom. Australia that are a world away from the old "portables" you may remember

By Dr David Heath and Dr Tharaka Gunawardena, University of Melbourne

Access to schools with high-quality classrooms and safe learning environments is something every parent wants and every child needs. And as our education needs rapidly expand, the modular classroom looks set to play a leading role in our learning environment.

In the state of Victoria alone there are 1547 government schools educating more than 600,000 students. Our population is increasing rapidly, with Victoria forecast to grow from **6.3 million** to around **10 million by 2051**. This fast population growth is accompanied by the need to develop cost effective solutions that deliver more schools to educate our future children.

ENGINEERING & TECHNOLOGY

Featured

Dr David Heath
National Technical Manager, ARC Centre for Advanced Manufacturing of Prefabricated Housing, University of Melbourne

Dr Tharaka Gunawardena
Research Fellow, ARC Centre for Advanced Manufacturing of Prefabricated Housing, University of Melbourne

Share:   

PURSUIT

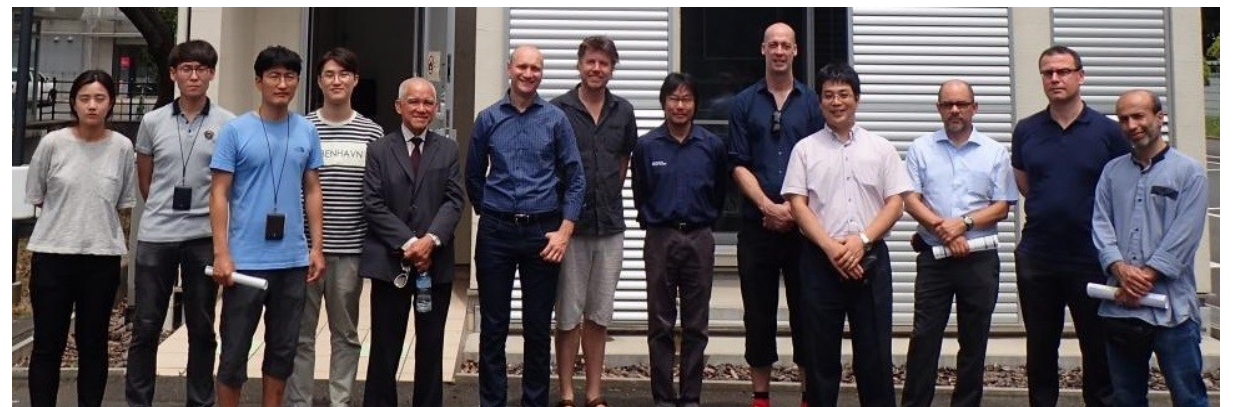


CAMP.H Activities - Engagement & collaboration

SWEDEN



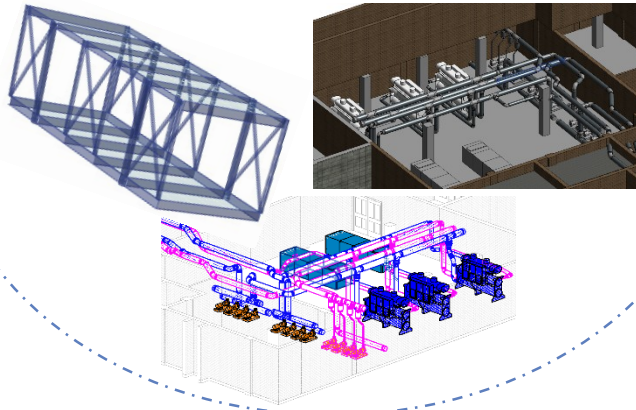
JAPAN



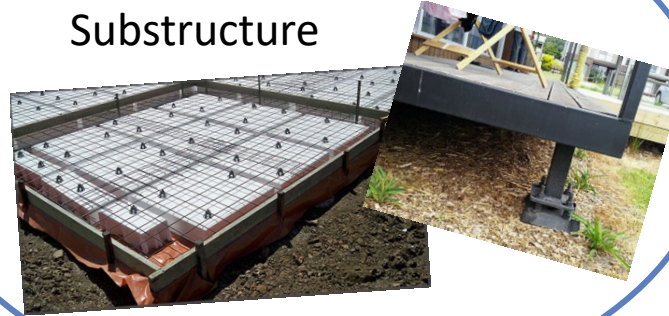
Forms of Prefabrication



Design / Approvals



Construction of Substructure



Construction of Superstructure



Role of the Head Contractor – for timely project delivery

Construction of Services and Support Infrastructure



Testing

Commissioning

Rectification of defects



THE UNIVERSITY OF
MELBOURNE

Thank you

Tharaka Gunawardena

Research Fellow

CAMPH, Department of Infrastructure Engineering

The University of Melbourne