

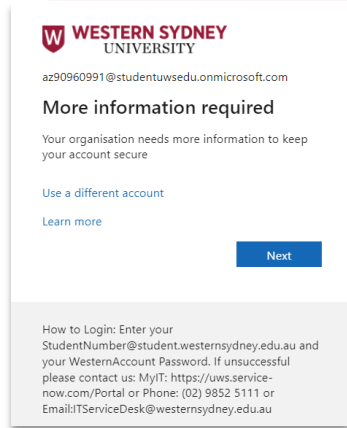
Student Multifactor Authentication Guide

Microsoft Multifactor Authenticator App is already installed on Mobile

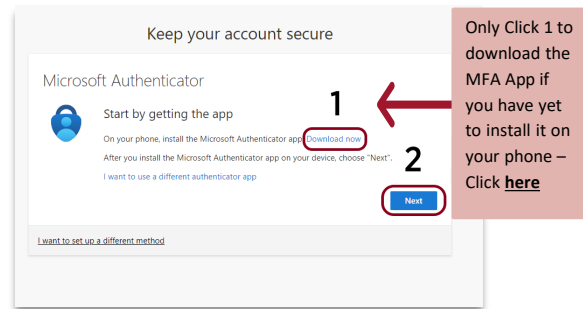
Handy hint:

Save time and download the **Microsoft Authenticator App** to your phone before you need to authenticate – Click [here](#).

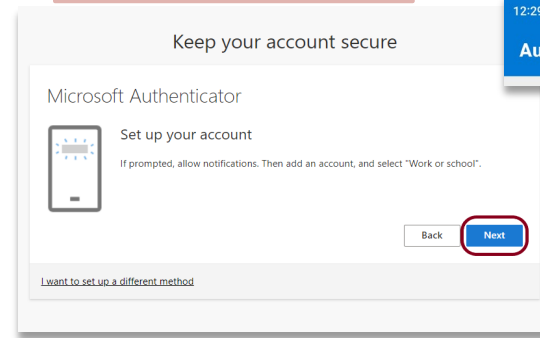
1 When MFA is enabled on your account, a message will pop up prompting you to 'enroll' for the first time.



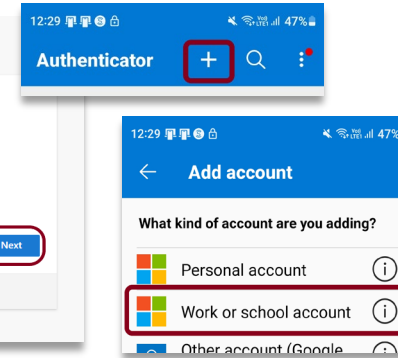
2 If you've already installed Microsoft's Authenticator App, click on 'Next'



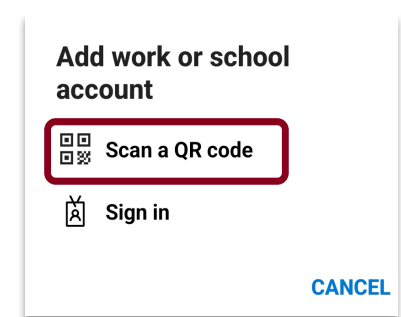
3 Open the Microsoft Authenticator app. You will be prompted to add your Western account. Click 'Next'



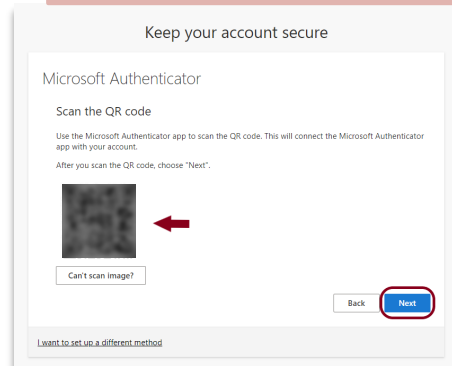
4 Click '+' and 'Work or school account'



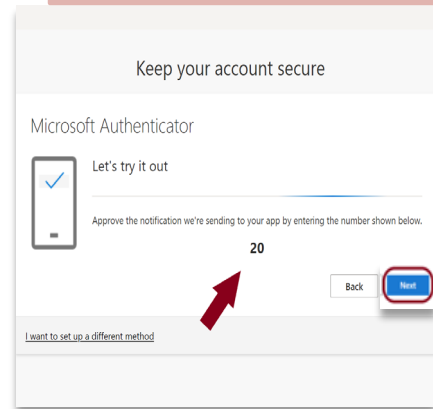
5 Chose 'Scan a QR code'



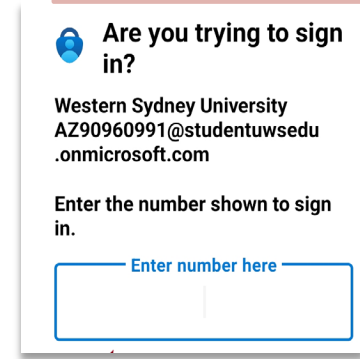
6 Use your phone's camera to scan the QR code on your computer's screen



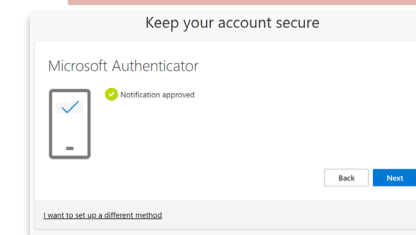
7 Your computer will provide a number to verify with the MFA App



8 A notification will pop up on your mobile device. Enter the number shown on your computer screen to complete the sign in process



9 You'll receive confirmation your account is enrolled in MFA



10 You will be asked to authenticate your details with a number whenever you log in to a University system with MFA required.

