



***Innovation,
Connection and
Acceleration:
Careers in GWS***

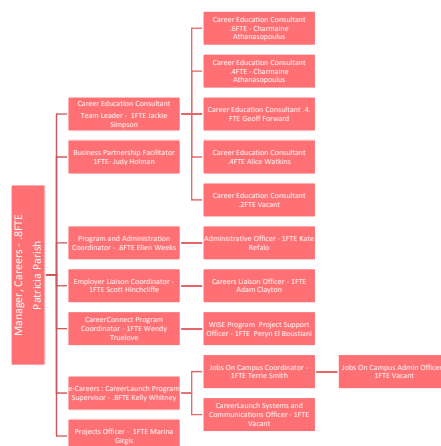
Who Are We and What Do We Do?

The Western Sydney U Student Recruitment Service

- Build on Resume
- Connect
- Opportunities part-time/fulltime
- Accelerate careers

PAGE 3

Careers Organisation Chart



PAGE 4

How Many Jobs?

- 216 recruitment service opportunities
- Some multiple positions under one job description
- Recent recruitment drive for large finance organisation

PAGE 5

Disciplines

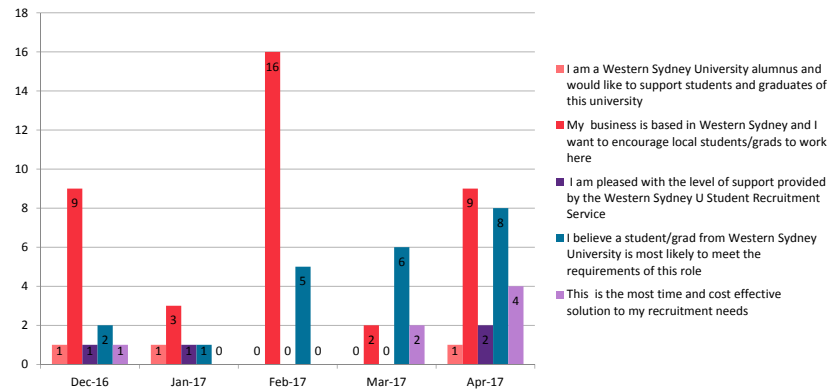
Discipline	Opportunities
Accounting	62
Marketing	65
Communication Arts	62
Economics and Finance	56
Computing and Mathematics	37
Law	32
Natural Sciences	28
Sydney Graduate School of Management	28
Social Sciences	23
Biomedical and Health Sciences	23
Psychology	20
Education	19
Humanities and Languages	18
Medicine	17
Nursing	16
Hospitality	14
TOTAL	520

7/10/2017

PAGE 6

Some Quick Statistics

Why IPs Chose our Students Dec 2016 - Mar 2017



PAGE 7

Testimonials from Industry Partners

...I'm a big fan of the service and believe that it provides employers with a good option.

I'll see how [the student] works out and let you know. I think she'll be great.

Hargreaves Property Group

7/10/2017

PAGE 8

Testimonials from Industry Partners

Thank you so much for your help through the process. Very successful outcome. I will hopefully be in touch in the future should other opportunities arise.

Gilbarco Australia

Testimonials from Industry Partners

...We contacted several universities in both Melbourne & Sydney and WSU was by far the best in terms of response, you are certainly providing an excellent service for your students as well as for potential employers.

Pelliconi & C. S.P.A.

CYIENT




Introducing Anthony Laria

Cyient Australia

7/10/2017

PAGE 11

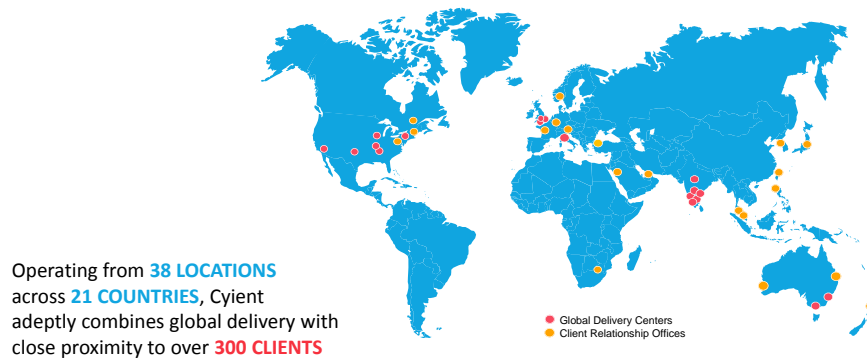
Cyient - Who are we?

KEY SERVICES	<div><div>Product Engineering</div><div>Process Engineering</div><div>Networks & Operations Digital</div><div>Design Led Manufacturing</div><div>Geospatial</div></div>									
INDUSTRIES SERVED	 Aerospace & Defense	 Communications	 Energy	 Geospatial	 Industrial	 Medtech & Healthcare	 Mining	 Rail	 Semi-conductor	 Utilities
FACTS & FIGURES	\$472 M Revenue*		\$65 M Operating Profit*			~ 13,800 Employees				
MARKET PRESENCE	North America		Europe, Middle East, Africa				Asia-Pacific			

* financial year ended 31 March 2016

Cyient - Our Footprint

WESTERN SYDNEY
UNIVERSITY
W



PEORIA



LONDON



MYSORE



HYDERABAD



SINGAPORE



SYDNEY

13

CYIENT © 2016 CONFIDENTIAL

Cyient - Together with WSU

WESTERN SYDNEY
UNIVERSITY
W

- The benefits of Western Sydney U Student Recruitment Service
- Quality of Graduates
- Future Opportunities
- What value have they brought?

7/10/2017

PAGE 14

Innovation – Application Development

WESTERN SYDNEY UNIVERSITY

CYIENT WIDEBAND WIKI

Recover PDH Muxes, SDH Network Elements and Switches

Contents [hide]

1 W CYIENT
2 Rf
3 Df
4 Rf
5 Cr
6 Ff
7 Vc
8 Or
9 Rf

Wideband Documents

Apparatus Related Documentation [Expand]

E-Line Documentation [Expand]

EuPDH Related Documentation [Collapse]

Document number	Document Name	Description
TA10001-230509	Magplex 4100 Hardware Installation Guide	Ethernet over PDH Magplex-4100 Hardware Installation Guide
TA000106	CMN Distribution Network Infrastructure	This Specification applies to the Design Elements for CMN #1, CMN, CMN
TA000106A01	Ethernet over PDH (EuPDH) EPI - 100 Exchange	This Specification applies to the design of Ethernet over PDH- EPI-100 in the Exchange
TA000106A02	Ethernet over PDH (EuPDH) Magplex 4100	This Specification applies to the Design Elements and Deliverable Items of Ethernet over PDH- Magplex 4100
TA000106A03	RAD-RIG-RE1 Exchange Install and Commissioning Guide	This Specification applies to the Design and construction associated with RAD-RIG-RE1
TA000106A04	RAD-ETX-102 Installation and Commissioning Guide for Customer Premises	RAD-ETX-102 Installation and Commissioning Guide for Customer Premises

EuPDH Related Documentation [Expand]

EuSDH Related Documentation [Expand]

ECORP Cables Related Documentation [Expand]

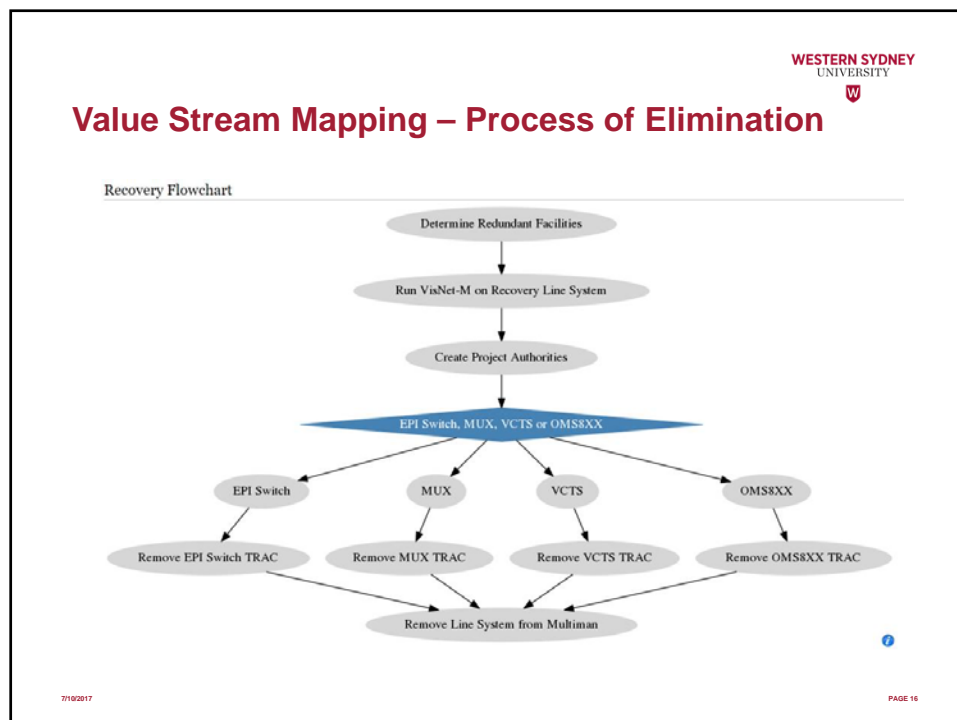
When to recover NE's or MUX equipment


It is necessary to recover SDH network elements or PDH Mux Equipment for some projects in order to:

- Save Fibre Infrastructure.
- Free up fibres if there are no available fibres to deliver a service.
- Or the customer wants the equipment removed from their Rack/Premises.

7/10/2017 PAGE 15

Value Stream Mapping – Process of Elimination





CYIENT Graduate Testimonials

'The telecommunications sector is a very difficult industry to get exposure in. The WSU program has given its graduates the opportunity to develop in the industry, at a time where more and more organisations are unwilling to train and mentor unexperienced candidates. The WSU program has given us a foothold into the industry, that we can utilize to build a competitive technical skill set that we can use to develop our careers.'

Abraham Salloum & Alfred Macale

7/10/2017 PAGE 18

CYIENT Graduate Testimonials

'Having hands on experience with the latest and future technology will definitely put me in a competitive position to take any future opportunity in this industry.'

Sam Jamil

7/10/2017

PAGE 19

Any Questions?

THANK YOU

Contact Judy Holman: j.Holman@westernsydney.edu.au

Tel: 47 360388 Ext 2388

Acknowledgements: Patricia Parish, Acting Manager, Careers
Western Sydney U Student Recruitment Service Team (Kate, Elieen & Raymond)
Staff and Graduates at Cyient

7/10/2017

PAGE 20