



REDI Business – Engage with us early



- **Identify** appropriate partners and opportunities
- Provide a **relationship framework** to support academics and partners
- Add value during the **scoping stage** – liaise with us early;
 - consultancy vs contract research models
 - co-funding opportunities
 - secure research support e.g. HDR, post-doc, RA
 - promote research outcomes;
 - provide impact opportunities
- Navigate the WSU administration
 - cost the project
 - secure internal approval
 - assist in contractual negotiations
 - retained earnings



REDI Business Team – Business Development Officers




<p>Andre Urfer</p> <p>Computing, Engineering, Maths Business Law MARCS Institute; Brain, Behaviour and Development</p>		<p>Michaela Tymichova</p> <p>Science & Health Social Science & Psychology Centre for Infrastructure Engineering Hawkesbury Institute for the Environment</p>	
<p>Nathanael Small</p> <p>Education Humanities & Creative Arts Social Science & Psychology Institute for Culture & Society</p>		<p>Madeline Yap</p> <p>Nursing & Midwifery Medicine NICM</p>	

2/18/2017

REDI RESEARCH Partnering with Researchers



REDI Research Team – Research Development Officers

<p>Dr Jenny Horn</p>  <p>Computing, Engineering, Maths NICM Business Hawkesbury Institute for the Environment</p>	<p>Dr June Chen</p>  <p>Education MARCS Institute Law Psychology</p>
<p>Lisa Worthington</p> <p>Humanities and Creative Arts Social Science Institute for Culture & Society</p>	<p>Ben Dowswell</p>  <p>Nursing and Midwifery Science and Health Medicine</p>

2/10/2017

Additional resources

[Grant Development Resource Library](#)

- Past ARC and NHMRC successful grant applications (login required)
- FAQs
- ARC Guides, checklist and templates

[Researcher Development Tools](#)

- ❖ Epigeum
- ❖ Vitae

Funding Opportunities with [Research Professional](#)

New to WSU:

- ✓ Auto-populated funding calendar for each academic unit
- ✓ Single sign on with WSU log on
- ✓ Footprints facility coming soon

COMING SOON

New online external research clearance form

SECTION TITLE GOTHAM HARROW BOLD 7PT

WESTERN SYDNEY
UNIVERSITY


Pitching your Research Project workshops 10 and 13 February 2017

“Speed-Pitch” your project summary during several 15-minute exchanges.

10 Feb 2017 (10-11.30am)

[Pitching your Research Project](#) with Associate Professor Jeff Powell, HIE
Venue: Penrith campus WS-BA.1.23-24 (Ward Seminar Room)

13 Feb 2017 (10-11.30am)

[Pitching your Research Project](#) with Professor Donald McNeill, ICS
Venue: Parramatta campus PS-EB.3.06 (CLS)

2/18/2017

The Research Grants and Contracts (Post Award) Team

WESTERN SYDNEY
UNIVERSITY

Research



Research Grants and Contracts (Post-award) Team

Tanya Barclay Manager, Research Projects and Finance 02 9678 7180

Research Grants Officer Portfolios

Moufid Atme

m.atme@westernsydney.edu.au
02 4736 0881 (Ext. 2881)

- School of Education
- School of Humanities and Communication Arts
- School of Science and Health

Reed Everingham

r.everingham@westernsydney.edu.au
02 4736 0909 (Ext. 2909)

- Centre for Infrastructure Engineering
- Hawkesbury Institute for the Environment
- Institute for Culture and Society
- The MARCS Institute

Andrea Kantek

a.kantek@westernsydney.edu.au
02 4736 0850 (Ext. 2850)

- School of Business
- School of Computing, Engineering and Mathematics
- School of Law
- School of Medicine
- School of Nursing and Midwifery
- School of Social Sciences and Psychology
- DVC – Academic | Research and Development | People and Advancement

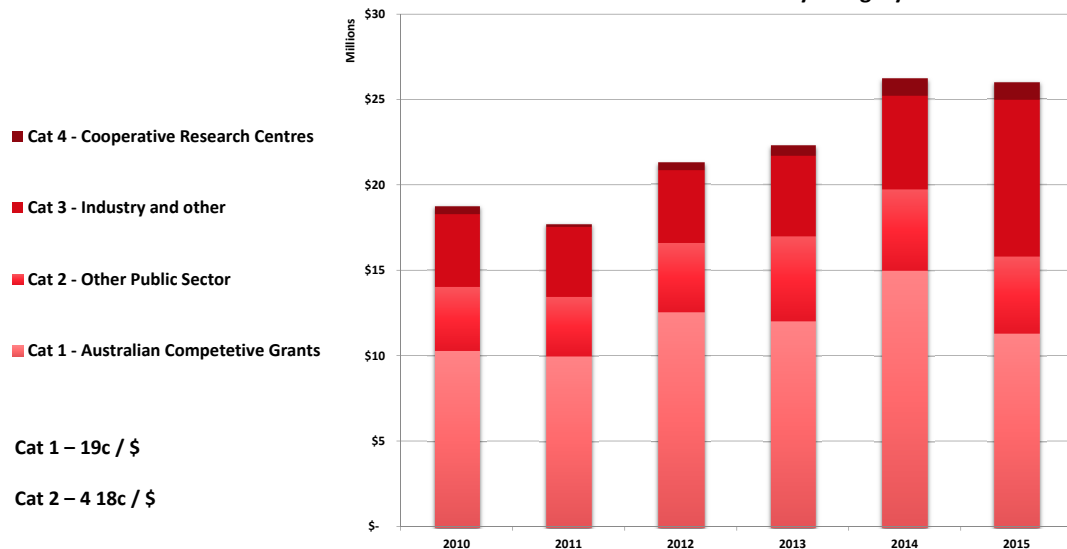
Susan Atherton Grants Officer – Operations 02 4736 0311 (Ext 2311)

2/18/2017

What Counts As Research Income?



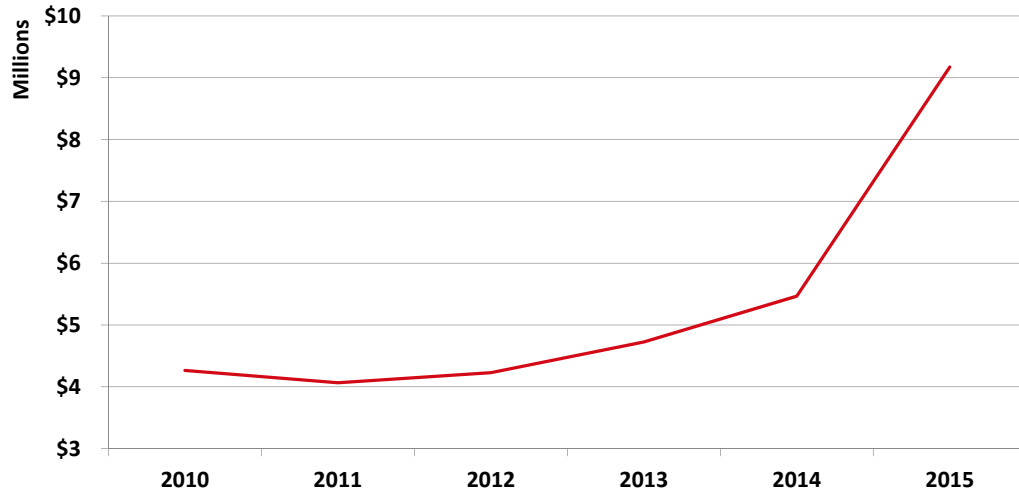
Western HERDC Income by Category



2/18/2017

“Other” – the most wonderful word

Industry and Other Income (Cat 3)

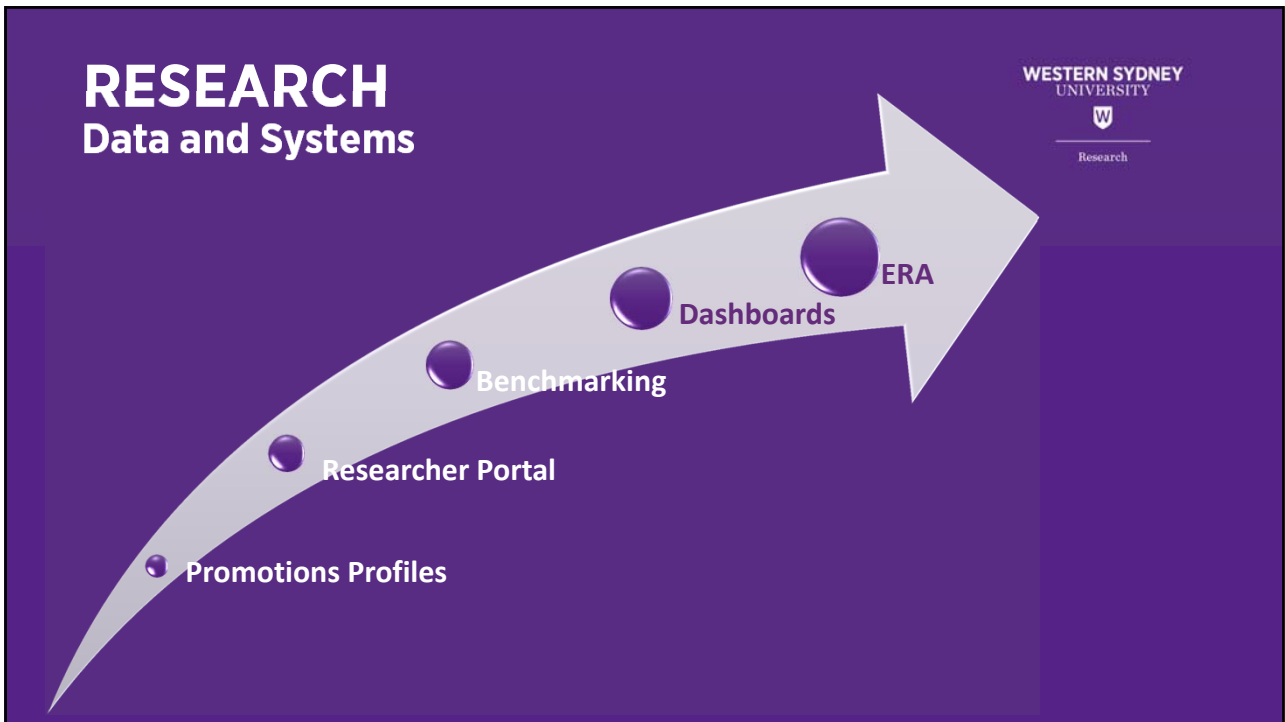


2/18/2017

Retained Funds

- Retained funds are any funds remaining within a project, once all direct costs, salary on-costs, indirect costs, infrastructure and overhead costs are met.
- The availability of retained funds will allow the researcher to continue to invest in research activities that are not covered by external research income.
- All applications to expend retained funds must be directed to the School Dean or Institute Director
- Funds are deemed University funds and must be spent in accordance with University policies.
- Approved funds are to be spent by the end of the following year (31st Dec). E.g. funds approved during 2016 must be spent by 31 Dec 2017.

2/16/2017



Research Data and Systems

Analysis of last years successful applicants grouped to relevant ERA Cluster

Future Fellow Grants Awarded 2016

Cluster: Biological and Biotechnological Sciences (BB)

The median RCI is **2.7**

The median no of Journal articles in 6 years is **21.0**

95% are in a discipline which was rated 3, 4 or 5 in ERA

The median H index is **19.0**

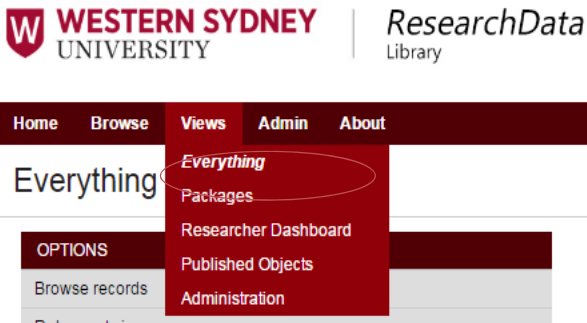
WESTERN SYDNEY UNIVERSITY

2/16/2017

Researcher Dashboard

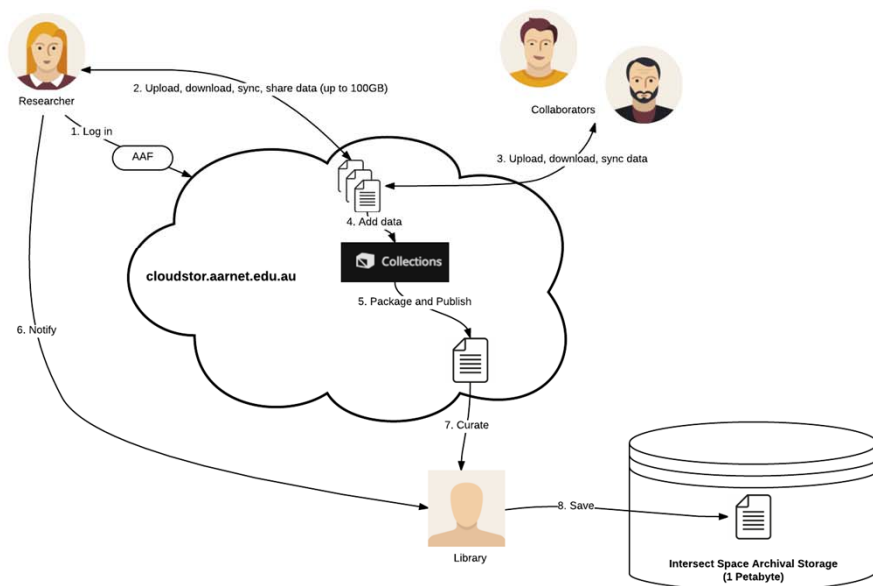
Data Management Made Easy

Login using your Western Sydney account:
Views: Researcher Dashboard:
Add a new data management plan



Library Research Team
lib-research@westernsydney.edu.au

Using Cloudstor and the Collections app



Academic Knowledge Transfer



- The government's impact agenda - significantly influencing how institutions and academics prioritise their work
- Effective knowledge exchange between researchers and industry/end-users/beneficiaries of research is crucial:
 - Ensure end-users are part of your entire research journey – maximise engagement with end-users
 - Maintain ongoing relationships with end-users - long term (translation to impact cannot happen without end-users)

ENGAGE + DISCOVER = IMPACT

2/18/2017

SECTION TITLE GOTHAM NARROW BOLD 7PT

Engagement and Impact (EI)



- **December 2015:** National Innovation and Science Agenda
 - Emphasised greater collaboration between universities and businesses
- **May 2017:** EI Assessment Pilot
 - Engagement pilot (quant indicators plus narrative statement) – across 4 two-digit FORs – 03;11;21;and 22
 - Impact pilot (case studies plus quantitative data) – across 6 two-digit FORs – 05; 07; 09; 13; 19; and 20
- **2018:** First full systematic EI national assessment alongside ERA
 - Nominations to the ERA RECs and EI Assessment Panels – Late February 2017 (researchers and research end users)

2/18/2017

WESTERN SYDNEY
UNIVERSITY

Research

RESEARCH ETHICS

Embedding ethics and safety into all aspects of research –
from design to ethical research practice

WESTERN SYDNEY
UNIVERSITY

Research

Ask an Ethics Officer:

How can I get help with my ethics application?

- Ethics workshops
- Presentations to HDR and MRes students
- Access to guidance documents

HumanEthics@westernsydney.edu.au

AnimalEthics@westernsydney.edu.au

Biosafetyradiation@westernsydney.edu.au



Human Research Ethics Application (HREA)

The National Health and Medical Research Council (NHMRC) has released a new form – the Human Research Ethics Application (HREA)

Visit www.hrea.gov.au to see it for yourself.

The NEAF will be decommissioned.

The new form is in use from 2017.

For further information please contact Human Ethics – humanethics@westernsydney.edu.au



Role of the Animal Care and Ethics Committee (ACEC)

The role of the ACEC is to:

- Apply a set of principles, outlined in the Code*, that govern the ethical conduct of people whose work involves the use of animals for scientific purposes
- Ensure that the use of animals is justified, provides for the welfare of those animals and incorporates the principles of Replacement, Reduction and Refinement

**Australian Code of Practice for the Care and Use of Animals for Scientific Purposes*, 8th Edition (2013)

Biosafety and Radiation Safety Committee (BRSC)

- Ensuring biological and radiation safety
- Managing genetically modified microorganisms, plants and animals



REDI: Shared Research Facilities

Expert Guidance, Analytical Services, and High-end Scientific Instruments for all to access



Shared Research Facilities

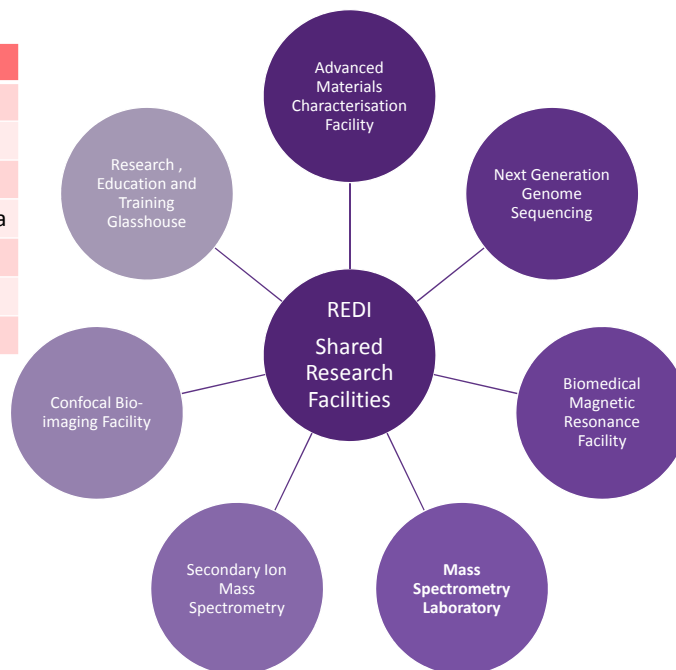
- The Shared Research Facilities provides any Western Sydney University Academic Staff, Postdoctoral Researchers, HDR Candidates, and in some case Undergraduate Students and with the opportunity to conduct research using cutting-edge scientific instrumentation and laboratory facilities.
- Shared Research Facilities are open to all researchers, from any School, Centre or Institute.
- We also provide services to researchers from other Universities, Government and Industry at competitive rates.
- Shared Facilities staff are highly trained experts in their field who ensure the equipment is maintained, calibrated, and safe to use. They also provide training, guidance, supervision and assistance in operating the instruments and perform complex work for researchers.
- Shared Facilities is centrally funded for core service and a range of fixed costs, Western Sydney University researchers only pay for non-routine consumables and reagents. This varies from facility to facility and the cost of each project needs to be discussed with the Facility Manager.
- The 7 Shared Facilities are coordinated as a cohesive team by the Manager of Shared Facilities (Murray Austin) and Research Facilities Officer, David Fraser. Ask them anything, they will connect you with the right people.

Murray Austin: m.austin@westernsydney.edu.au 0404 495 471

David Fraser: d.fraser@westernsydney.edu.au (02) 9678 7091

Website: https://www.westernsydney.edu.au/research/centralised_research_facilities

Facility	Manager
AMCF	Dr Ric Wuhrer
NGS	Dr Caroline Janitz
NMR	Prof Bill Price
Mass Spec	Dr Angie Galezowska
SIMS	Dr Rong Lui
Confocal	Dr Anya Salih
Glasshouse	Mr Murray Austin



REDI Contacts



EXECUTIVE DIRECTOR

Steve Hannan

s.hannan@westernsydney.edu.au

02 9852 5149 | 0408 919 670

REDI RESEARCH

Nikki Lengkeek

researchRDO@westernsydney.edu.au

02 4736 0928 (Ext 2928)

DATA AND SYSTEMS

Gary Long

redidata@westernsydney.edu.au

02 4736 0888 (Ext 2888)

RESEARCH ETHICS AND INTEGRITY

humanethics@westernsydney.edu.au

animalethics@westernsydney.edu.au

biosafetyradiation@westernsydney.edu.au

ASSOCIATE DIRECTOR

Melanie Farmer

m.farmer@westernsydney.edu.au

02 9678 7258 | 0481 545 200

RESEARCH GRANTS AND CONTRACTS (POST AWARD)

Tanya Barclay

postaward@westernsydney.edu.au

REDI BUSINESS

Tim Horan

redi@westernsydney.edu.au

02 9685 7935 | 0414 948 174

CENTRALISED RESEARCH FACILITIES

Murray Austin

m.austin@westernsydney.edu.au

02 9678 7081 | 0404 495 471

2/18/2017

29

WESTERN SYDNEY
UNIVERSITY



Research