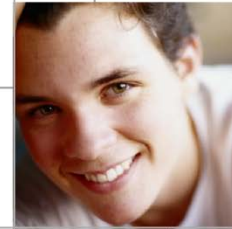




# Enhancing the Student Experience

Prof. Denise Kirkpatrick, DVC and VP Academic  
Angelo Kourtis, Acting VP People & Advancement  
A/Prof. Paul Wormell, Chair of Academic Senate





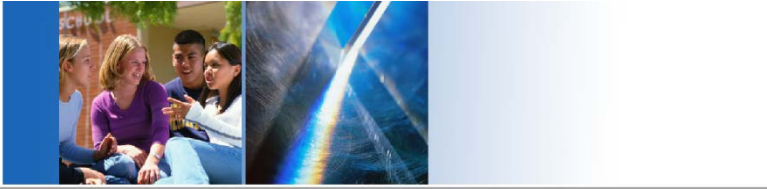
## Schedule

- 11.30am Introduction and Welcome
- 11.35pm Opening Presentations
- 12.00pm Table discussion
- 1.00pm Short report back from each table
- 1.20pm Summary and discussion of next steps.  
Report to University Executive and Senate.  
*Lunch will be available.*



## Table Discussion

- Please identify your recorder and reporter.
- Discuss any over-arching questions from the question and answer session.
- Focus on two or more questions from the sheet, but broader discussion is welcome.
- Two-minute report from each table, but please send/hand detailed notes to Gill Brown (email: [gillian.brown@uws.edu.au](mailto:gillian.brown@uws.edu.au)).



## Some Questions

1. How will we know when we have created a distinctive student centred experience?
2. What aspects of the student experience do we need to understand better?
3. What is the optimum mix of focus – student learning experience and broader social and civic experience?



## Table Discussion

- Please identify your recorder and reporter.
- Discuss any over-arching questions from the question and answer session.
- Focus on two or more questions from the sheet, but broader discussion is welcome.
- Two-minute report from each table, but please send/hand detailed notes to Gill Brown (email: [gillian.brown@uws.edu.au](mailto:gillian.brown@uws.edu.au)).



## Schedule

- 11.30am Introduction and Welcome
- 11.35pm Opening Presentations
- 12.00pm Table discussion
- 1.00pm Short report back from each table
- 1.20pm Summary and discussion of next steps.  
Report to University Executive and Senate.  
*Lunch will be available.*