

THE MORNING *LaTTe*

LaTTe's NEWSLETTER - NOVEMBER 2021

The Learning and Teaching Technologies Advisory Group (LaTTe) provides recommendations to guide the strategic directions and use of learning technologies. This newsletter aims to share our activities and if you'd like to know more, or get involved, please contact your [LaTTe representative](#).



Integrated Learning Analytics

Learning analytics and data have the potential to improve and transform learning and teaching practices. Academic-facing dashboards enable instructors to have access to a variety of data, for instance, student interactions and engagement with instructional material. This allows them to make meaningful decisions about their learning design and teaching practice. In a similar way, student-facing data, in the form of dashboards, can be used to provide students with information that is relevant to their own learning. This can support improvements in students' performance, the extent and depth of their engagement, and learning practices to study effectively in different learning environments. Throughout the year, LaTTe has provided guidance and feedback in the development of academic and student-facing dashboards.

Academic-facing dashboards

At present, academics have access to 14 reports in vUWS that can be used to gain an insight into student data on engagement and learning in the vUWS site. Most of these report on student behaviour and provide various dimensions of student interaction (e.g. 'Subject at a Glance' or 'Discussion Forums' report). A further three Dashboards, that are made up of nine reports, have been created. They provide more indepth data on student behaviour, data on learning design features of vUWS sites and a more detailed view of student submission data. Currently, these Dashboards are being refined to suit the Western Sydney environment and for delivery via vUWS.

The second part of this project is to provide framing material to support the new and current learning analytics dashboards for academic use. The framing material will be a set of comprehensive interactive online support material informing academics of the purpose of the dashboard, how to use it, what the data means, a data dictionary and an example scenario. The scenario will provide a realistic example of how to set up, view, interpret and use the data to improve teaching and learning in vUWS.

It is expected that the new reports and support material will be available to academics in the first half of next year.



Integrated Learning Analytics

Student-facing dashboards

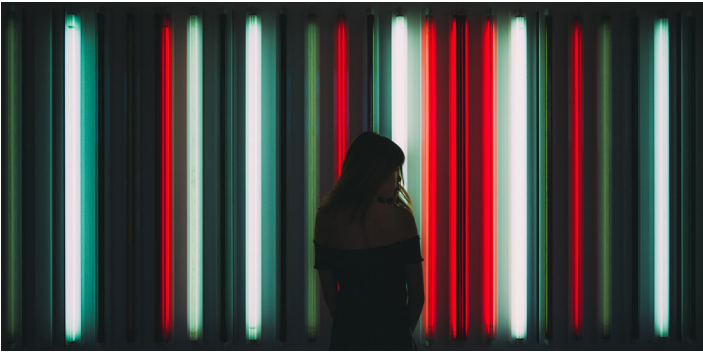
LaTTe have been working closely with Blackboard to develop the student-facing learning analytics dashboard, with a limited pilot planned for Summer session, 2021. Guided by a ‘feedback, feed-up and feed-forward’ model, the team have incorporated features, including ‘key insights’ sections to help students interpret the data with links to appropriate resources, and a calendar and notification system that shows upcoming assessments to help students set goals around tasks. This aims to support students become more effective self-regulated learners by helping them to take action and make changes to their learning behaviours and practices.

Currently in the testing stage of the dashboard, we have gathered preliminary feedback from student focus group discussions. Overall, the students were positive and saw the value of the dashboard, in knowing about their progress, making decisions on how much time they need to spend, and how this can have an effect on their participation and engagement in online activities. Feedback will continue to be gathered during the pilot to help improve the dashboard for an institutional-wide implementation in 2022.

ALLY work in the TEL Support Squad

Digital accessibility improvements is an initiative of LaTTe. Blackboard ALLY identifies content in need of a digital accessibility uplift, and the TEL Support Squad are working with schools to address, and fix severe and major accessibility issues in vUWS sites. There are currently over 65 subjects across 10 schools in our project pipeline which will receive an ALLY review. The review includes fixing severe and major ALLY issues where possible, the identification of ALLY issues that can’t be fixed and communication of those issues plus an overall summary of the review to the Subject Coordinator. Already we have seen positive changes in sites as a result of the ALLY reviews, with some sites showing an improvement of over 30 in their ALLY score, pushing the score above the institution’s standard of 80.

The TEL Support Initiative is entering its final round and we are currently accepting expressions of interest for both project and ALLY work. If you are interested, please contact your LaTTe representative today.



The Future of Technology Enabled Learning

What will the student learning experience look like in 5 years?

What will students be required to learn and do?

These are some of the questions that have been discussed at workshops. The objective of the workshops is to develop a profile of the future shape of teaching and learning and how the most up-to-date technologies such as augmented, virtual and mixed reality technologies can support these future requirements. If you would like to be involved in these discussions, please contact your school's LaTTe representative.

Technology is about You, the Digital U

Working with our technology partners, LaTTe has created a space of learning and higher thinking where staff can apply technologies to their work.

If you are interested in finding out more about **Adobe Acrobat**, we have a workshop scheduled for December. Keep an eye on our [webpage](#) for registration information.

Digital Learning Thresholds

The Digital Learning Thresholds are Western's new standards for quality design and enhancement in our Digital Learning Environment, vUWS. These thresholds have been designed to adhere to a number of principles.

The pedagogical framework views our digital learning design through three lenses: teaching, social and cognitive presence with each threshold aligning with at least one of these.

To further promote a greater breadth of thinking around the thresholds, they have also been placed in to one of four learning categories: Learner Experience, Learning Structures, Learning Materials and Learning Activities.

The Digital Learning Thresholds will be tabled at the November Senate Education Committee meeting for endorsement.

The draft Digital Learning Thresholds are available and an implementation plan will be considered at LaTTe's next meeting.

Keen to know more?

Contact your **LaTTe representative** or visit [LaTTe's webpage](#).

Have a great day! From your colleagues on LaTTe.