



WESTERN SYDNEY
UNIVERSITY



SUSTAINABLE DEVELOPMENT: Global Frameworks and Partnerships for Social Justice

*Future of Work Forum
11 April 2018*

Brittany Hardiman
Sustainability Officer
b.hardiman@westernsydney.edu.au



ACKNOWLEDGED BY



GLOBAL LEARNING SPACE FOR ESD







RCE GREATER WESTERN SYDNEY



30

regional partners



working

together

to tackle our
regions challenges

1



2



3



4



A GLOBAL FRAMEWORK



1 NO POVERTY



2 ZERO HUNGER



3 GOOD HEALTH AND WELL-BEING



4 QUALITY EDUCATION



5 GENDER EQUALITY



6 CLEAN WATER AND SANITATION



7 AFFORDABLE AND CLEAN ENERGY



8 DECENT WORK AND ECONOMIC GROWTH



9 INDUSTRY, INNOVATION AND INFRASTRUCTURE



10 REDUCED INEQUALITIES



11 SUSTAINABLE CITIES AND COMMUNITIES



12 RESPONSIBLE CONSUMPTION AND PRODUCTION



13 CLIMATE ACTION



14 LIFE BELOW WATER



15 LIFE ON LAND



16 PEACE, JUSTICE AND STRONG INSTITUTIONS



17 PARTNERSHIPS FOR THE GOALS

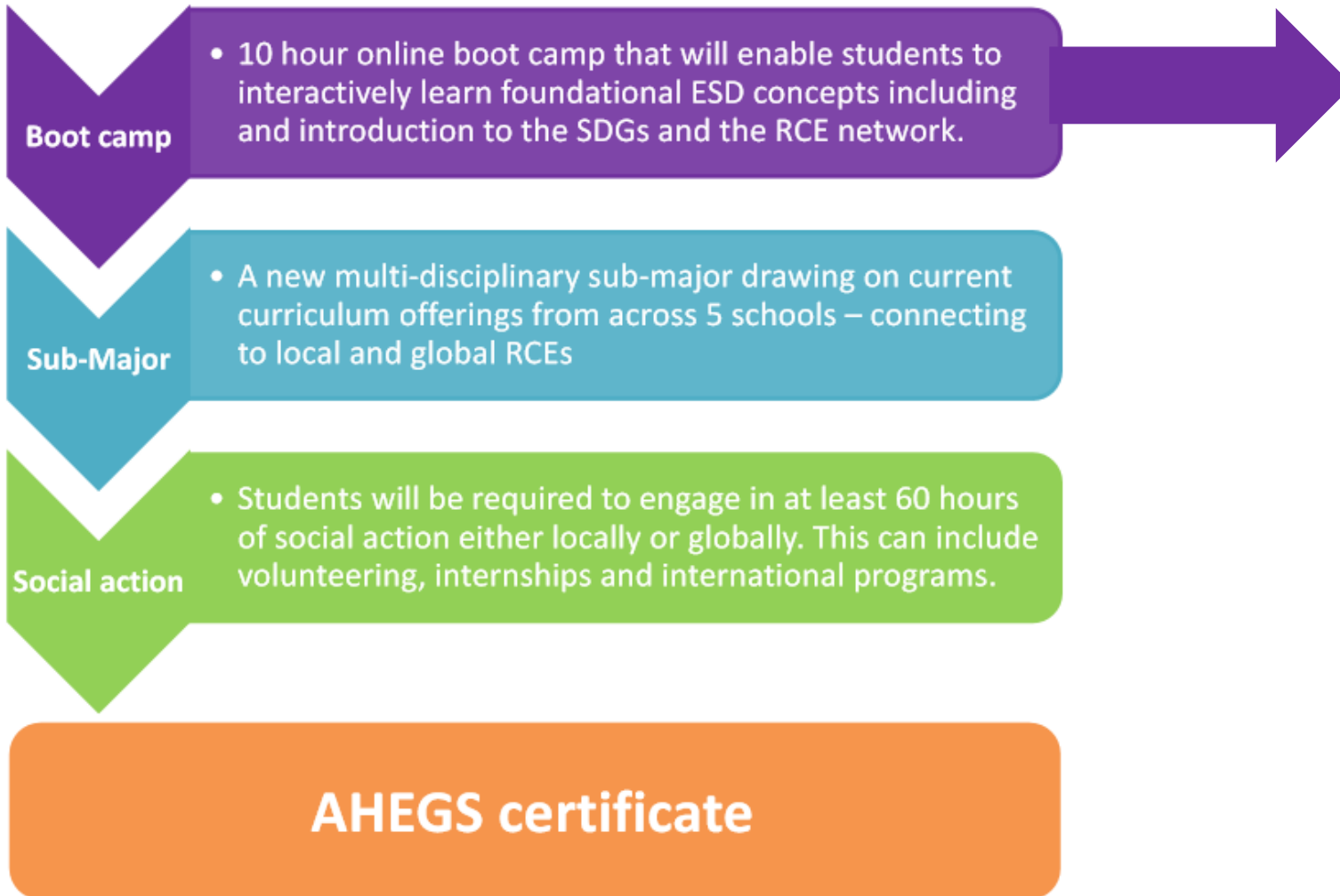


OUR RESPONSE PARTNERSHIP PEDAGOGIES

WESTERN SYDNEY
UNIVERSITY



The UNU-RCE Global Citizenship Graduate Award will comprise of a



Working with Sydney Olympic Park Authority



Technical Insight Programs




Energy Conservation


Technical Insight Programs


SYDNEY OLYMPIC PARK TECHNICAL INSIGHT TOUR (2007-2017)

THEMES	REGIONS							TOTAL
	Africa	America	Asia	Australia	Europe	Intnl/ Others	Japan	
Water	0	0	18	10	1	0	0	29
	0	0	207	275	90	0	0	572
Environmental	0	3	35	46	3	2	5	94
	0	66	594	1001	26	85	44	1816
Olympic Games/ Olympic Legacy	0	0	4	0	2	0	4	10
	0	0	63	0	14	0	64	141
Sports	0	6	3	2	0	1	1	13
	0	139	41	31	0	40	8	259
Business (Business Development/ Marketing)	0	0	6	3	1	0	1	11
	0	0	109	57	55	0	13	234
Corporate Government	1	0	5	2	0	1	1	10
	10	0	60	77	0	12	30	189
Security	0	0	4	0	0	0	0	4
	0	0	54	0	0	0	0	54
Sustainability	0	11	22	15	0	1	2	51
	0	207	493	763	0	5	35	1503
Infrastructure/Venues/Urban Planning	0	7	6	9	0	2	1	25
	0	147	103	264	0	87	8	609
Video conferencing	0	0	13	0	0	0	1	14
	0	0	193	0	0	0	73	266
Other	0	3	9	27	0	3	1	43
	0	36	158	5893	0	132	22	6241
TOTAL	1	30	125	114	7	10	17	304
TOTAL	10	595	2075	8361	185	361	297	11884

Legend:

 Number of visits (frequency)

 Number of delegates (people)

 Highest frequency of visits

Unboxing the Future



Master Plan 2030



- ### Liveability
- *Objective 6:* Services and infrastructure meet communities' **changing needs**
 - *Objective 7:* Communities are **healthy, resilient and socially connected**
 - *Objective 11:* Housing is more diverse and **affordable**

- ### Productivity
- *Objective 19:* Greater Parramatta is stronger and better connected
 - *Objective 21:* **Internationally competitive** health, education, research and innovation **precincts**

- ### Sustainability
- *Objective 27:* **Biodiversity** is protected, urban bushland and remnant vegetation is enhanced
 - *Objective 28:* Scenic and **cultural landscapes** are **protected**
 - *Objective 31:* Public open space is **accessible**, protected and **enhanced**

Green Star Communities

Green Star – Communities assesses the planning, design and construction of large scale development projects at a precinct, neighbourhood and/or community scale. It provides a rigorous and holistic rating across five impact categories.....

- Governance
- Liveability
- Economic prosperity
- Environment
- Innovation

LIST OF CREDITS

INDEX	CREDIT	POINTS AVAILABLE
GOVERNANCE		
1	Green Star Accredited Professional	1
2	Design Review	8
3	Engagement	6
4	Adaptation and Resilience	4
5	Corporate Responsibility	3
6	Sustainability Awareness	2
7	Community Participation and Governance	2
8	Environmental Management	2
LIVEABILITY		
9	Healthy and Active Living	5
10	Community Development	4
11	Sustainable Buildings	4
12	Culture, Heritage and Identity	3
13	Walkable Access to Amenities	2
14	Access to Fresh Food	2
15	Safe Places	2
ECONOMIC PROSPERITY		
16	Community Investment	4
17	Affordability	4
18	Employment and Economic Resilience	2
19	Education and Skills Development	3
20	Return on Investment	2
21	Incentive Programs	2
22	Digital Infrastructure	2
23	Peak Electricity Demand Reduction	2
ENVIRONMENT		
24	Integrated Water Cycle	7
25	Greenhouse Gas Strategy	6
26	Materials	5
27	Sustainable Transport and Movement	3
28	Sustainable Sites	2
29	Ecological Value	2
30	Waste Management	2
31	Heat Island Effect	1
32	Light Pollution	1
INNOVATION		
33	Innovation	10

Green Star Communities – Future Focus

Global megatrends are rapidly reshaping our industry and the built environment.

These include climate and demographic change, urbanisation, big data, artificial intelligence and technological innovation driving an increasing focus on our cities, health and well-being, human rights, equity and resilience.

These drivers are accelerating.

2015

In 2015, the world signed on to the Paris Climate Change Agreement. More broadly, the urgency of climate action started to become clear across the globe.

2016

In 2016, the 2030 Agenda for Sustainable Development was set by the United Nations supported by the 17 Sustainable Development Goals. The built environment is now seen as key to improving people's health and well-being. Affordability, social cohesion, community engagement, mobility and connection to nature are all issues that the modern built environment must address.

2017

In 2017, investors, lenders, insurers, and stakeholders were seeking to reduce their exposure to risk through investments in assets that are low carbon and resilient to the shocks and stresses of climate change. Organisations are now responding to increasing scrutiny and pressure to prevent human rights abuse, and to measure, report and act to reduce their impact on people, cities and the natural environment.

Green Star Communities – Future Focus

World leadership in 2025

Our vision is for healthy, resilient and positive places for people and the natural environment. Therefore, we propose that all world-leading buildings, fitouts and precincts be:

Healthy – have amenities that enhance a person's well-being, encourage healthy and active transport and lifestyle decisions, mimic or connect with nature and provide a comfortable environment. They are conceived, built and operated to reduce or eliminate toxic materials, are well ventilated and lit.

Resilient – ready to address the future impacts of climate change and to respond positively to other changes and shocks. A world leading asset should be resilient to natural disasters and man-made impacts including changing technology and demographics. It should be resilient to long-term risks to its value. It should minimise exposure to risks negatively impacting people's health and human rights. It should continue working in the face of adversity. A world-leading asset should make the community and surroundings more resilient too.

Positive – focused on delivering a better environment for people and the planet. An asset that is positive is highly efficient with the use of our limited natural resources. It has lower energy consumption thanks to smarter design. Renewable energy powers the buildings and infrastructure (on-site or off-site). It is mostly fossil-fuel free and is carbon neutral by offsetting all its emissions. For new assets, this also includes reducing and offsetting its embodied carbon.

Places – able to respond to the needs of people and our planet. They should be smart, well-designed, managed and governed. They must be affordable. They must deliver on their commitments. They are safe, comfortable, inclusive and of high amenity. They improve the urban fabric, enhance the local infrastructure, and provide value to the community.

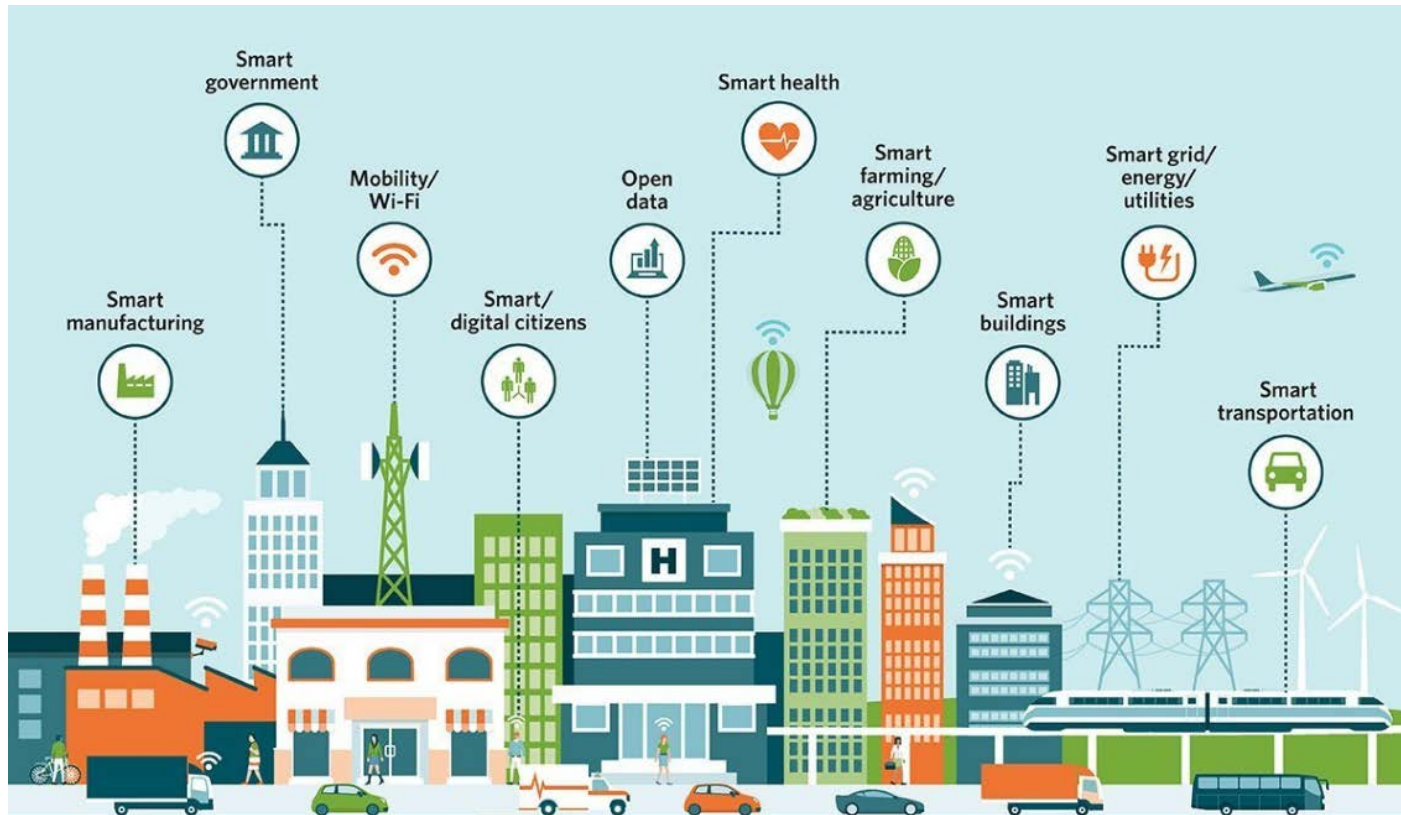
People – able to show that all are welcome, and people thrive in them. They are designed for everyone, beyond accessibility compliance laws. They are also designed to respect and celebrate our culture and our history. They help encourage reconciliation and help people connect with each other. Assets must be built with consideration of the rights of future occupants, the workers involved, those involved in the supply chain, and those in the surrounding community.

Natural environment – considerate of the current and historic impacts to our natural environment. They must reduce any impact on the site and enhance it as much as possible. A world leading asset contributes to increasing the ecological value and biodiversity of the site and beyond. They use their influence to connect green corridors in the city and work to enhance a city's biodiversity.

Smart Cities

“A smart city *uses* information and communications technology to enhance its liveability, workability and sustainability.”

<https://smartcitiescouncil.com/>



A smart city....

- **Collects** information about itself (sensors and other devices / Internet of Things)
- **Communicates** that data (using wired or wireless networks)
- **Crunches** that data to understand what's happening now and what's likely to happen next

Bringing it together

'Language of Lifestyle' shooting day: Part 1
5th May 2017 / Friday / SOP

Click and drag to add



Bringing it together

'Language of Lifestyle' shooting day: Part 2
24th May 2017 / Wednesday / SOP



Click on Tools, Comment and Share to access additional features.



*Mr Charles Moore,
CEO of SOPA*

Murama Cultural Centre

Accessibility
and Adaptive
Re-use

Leveraging
Technology

Innovative
Governance

Deep
Community
Engagement

Cultural &
Heritage
Conservation

Employment
& Capacity
Building

Ecological
Value

ROI and Re-
investment

Authentic
Co-Design



Thankyou

