



**CEREMONIAL PRESENTATION  
OF UNIVERSITY MACE**

---

21 August

1992



## ORDER OF PROCEEDINGS

1000

Ceremony will begin with entry of Vice-Chancellors Professor Don McNicol and Professor Brian Smith followed by the Chancellors Dame Leonie Kramer and Sir Ian Turbott.

Welcome by Sir Ian Turbott, Chancellor of University of Western Sydney who will then invite Associate Professor Helge Larsen one of the designers of the Mace to describe it.

Dame Leonie Kramer, the Chancellor of University of Sydney will formally present the Mace to Sir Ian Turbott, Chancellor of University of Western Sydney.

Response by Sir Ian Turbott

1030

The ceremony will conclude with the Mace bearers of the University of Sydney and University of Western Sydney, leading the Chancellors followed by the Vice-Chancellors out of the Board Room.

Official Photographs

Morning Tea



The University of Western Sydney is a federation of UWS Hawkesbury, UWS Macarthur and UWS Nepean each with different histories and strong regional ties. Currently the University is developing a collective identity while at the same time maintaining the character of the individual Members.

The challenge was to create a symbol that embodies the University as it exists today and give expression to the mission which provides guidance for the future.

The designers Helge Larsen and Darani Lewers developed a three dimensional form reminiscent of the cosmic sphere as the symbol for the University. It is based on the armillary the oldest known astronomical device. The cosmic sphere represents the evolution of knowledge which led to the concept of the modern universe and is constructed in sterling silver.

Suspended in the centre of the cosmic sphere is a three sided pyramid made in 18ct gold which represents the three Members of the federation (each side features the logo in the appropriate coloured enamel).

The partially filled areas of silver sheet within the sphere are etched with graphic lines and textures to suggest the State of NSW, served by the three University Members. While the small organic form constructed at the top of the cosmic sphere suggests growth essential to the development of the University as a provider of tertiary education for the fastest growing area in Australia. The form has been derived from the wattle flower.

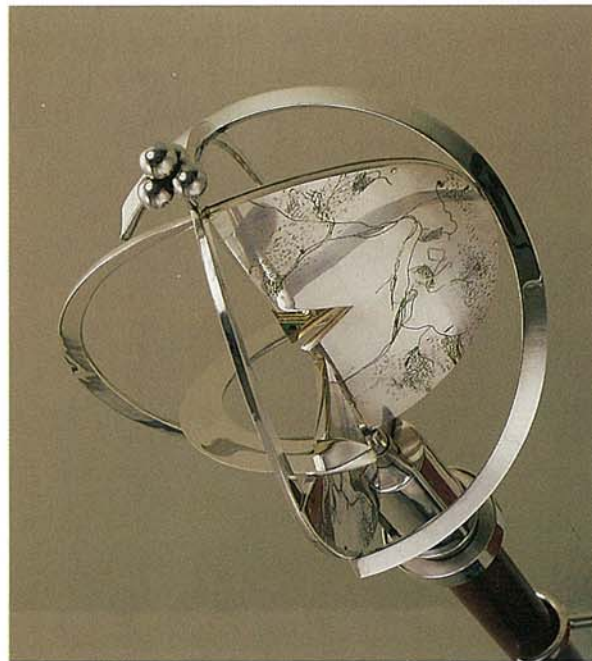
The staff is made from myall wood, an organic element which echoes the timber baton, a feature of the Mace made for the University of Sydney in 1854.

The lower portion of the staff takes the form of a constructed cone made in sterling silver. At the top are two triangular forms placed on either side of the disk connected by three strong vertical lines to a domed section at the base.

This section of the Mace symbolizes the structures and systems which provide the parameters of the University's specialist areas of knowledge, while the connecting vertical lines represent the connections between the acquisition of knowledge and its application through the staff, students and the broader community.

The surface treatment of the sterling silver is hammered to catch the light at different angles and give a warm and reflective quality to the metal.

The design follows the traditional form of a mace while the symbolism was conceived to express the role of the University of Western Sydney. The Mace can be easily carried in graduation ceremonies and the stand is made in timber with two sterling silver fixtures.



#### Specifications of the University of Western Sydney Mace

<b>Designers and Makers:</b>	Larsen and Lewers 43 Seaforth Crescent SEAFORTH NSW 2092 Phone: 948.3742
<b>Designed:</b>	1991
<b>Materials:</b>	18ct Gold - Sterling Silver - Enamel - Myall wood
<b>Dimensions:</b>	110mm long - 200mm wide/diameter
<b>Weight:</b>	2.2 kilograms



## HISTORICAL PERSPECTIVE

The University of Sydney has from the outset, been a strong supporter of the University of Western Sydney. The Heads of Agreement which led to the founding act of the University of Western Sydney, spoke of the University being established in association with the University of Sydney in its early years. The University of Sydney has contributed to the development of the University of Western Sydney through:-

- \* Nominations of members of the Board of Governors by the Senate of the University of Sydney.
  
- \* Membership of the Academic Board by staff of the University of Sydney,
  
- \* Participation by staff of the University of Sydney in:
  - staff selection and promotion committees
  - course advisory committees
  - course assessment and review committees
  - higher degree examination
  - course planning and development
  - development of proposals for research funding