



31 October 2023



LAST CHANCE TO APPLY - APPLICATIONS CLOSE THIS WEEK.

The Graduate Recruitment Accelerator (GRA) program prepares students to make competitive applications for graduate employment programs.

You will be coached through graduate recruitment techniques, allowing you to prepare and polish responses for future employers.

Understand the process, hear feedback from industry recruiters, and get a step ahead for graduate season next year.

Announcing industry partner KPMG- who has partnered with the GRA program and will host the in-program mock assessment centre.



Open to semi-final and final year students from all schools.
Registrations close – 6 November 2023

Find out more

VOLUNTEER OPPORTUNITY

MAKE THE MOST OF YOUR SUMMER.

Welcoming proactive learners. Your role is to learn and support the team, under the guidance and support of Lead Carers and the Camp Leader. We welcome and encourage you to challenge yourself and seek the support of ACA leaders during camp to translate your learnings into action.

How long is a volunteer placement?

We need volunteers to commit to a whole six day camp

What do I need to do to volunteer at an ACA camp?

- Complete a 3hr ACA Orientation
- Have a current Working With Children's Check (or similar, depending on state)
- Have A recent National Police Check
- Complete a NDIS Module online before camp (half hour)

What will you get out of volunteering with ACA?

- You'll learn a LOT about Autism and neurodiversity
- You'll be given access to lots of useful content created by actually Autistic people
- You'll experience first-hand working with Autistic young people and their families
- You'll have a LOT of fun!



[Find out more](#)

Education Showcase at Sydney Zoo



Come for a FREE afternoon at Sydney Zoo. Inviting pre-service teachers to come for our Education Showcase to learn about what Sydney Zoo has to offer teachers and students.

When: From 1pm Saturday 4th November 2023

Where: Sydney Zoo - 700 Great Western highway, Bungarribee

Who: Any pre-service teacher (registration required), and one guest. You will need to present proof of enrolment in an education course to gain free entry.

What: Learn about excursions and syllabus linked workshops that can be delivered onsite, at schools/centres or online!

[Find out more](#)

Upcoming Career Workshops

Connect with trained Careers Consultants who can provide a range of information and resources to support your career decision-making and journey.

Workshops where ALL students and ALL questions are welcome.



Careers Q&A

12:00 pm - 1:00 pm
Thurs 2 Nov 2023

[Find out more](#)

Education Showcase with Sydney Zoo

1:00 pm - 3:00 pm
Sat 4 Nov 2023

[Find out more](#)

Careers Q&A

12:00 pm - 1:00 pm
Mon 6 Nov 2023

[Find out more](#)

Resume Ready

1:00 pm - 2:00 pm
Wed 8 Nov 2023

[Find out more](#)

Finding part time work

2:00 pm - 3:00 pm
Thurs 9 Nov 2023

[Find out more](#)

Applying for internships and vacation work

11:00 am - 12:30 pm
Tues 14 Nov 2023

[Find out more](#)



Have a career-related question?

Our experienced Careers Consultants are here to help you formulate your strategic career path respective to your current studies. [Ask them a question through CareerHub.](#)

Jobs on Campus

The Jobs on Campus program provides students with the opportunity to apply for paid, professional experience right here at Western Sydney University.

If part-time or casual work with the University is on your mind. Register for the Jobs on Campus direct mailing list to be the first to receive new opportunities when they open.



[Join the JOC mailing list](#)

External Employment Opportunities

Below is a sample list of jobs currently available in CareerHub. To view the complete list check out the full time and graduate opportunities under the opportunities tab on CareerHub.

[View more opportunities](#)

Intern – B2B Technology Advisory Sales

Gartner
Sydney, NSW
Closing: 30 Nov 2023
Discipline: All

[Find out more](#)

Seasonal Warehouse Assistants

JD Sports
Homebush, NSW
Closing: 17 Nov 2023
Discipline: All

[Find out more](#)

Podiatrist (New Graduate)

Shoalhaven Podiatry Centre
Sydney, NSW
Closing: 6 Dec 2023
Discipline: Health, Podiatry

[Find out more](#)

Software Engineering Intern

Schonfeld – Software Engineering
Sutherland Shire, NSW
Closing: 25 Nov 2023
Discipline: Engineering

[Find out more](#)

Business Services Accountant

Corporate Receptionist

CAAA
Sydney, NSW
Closing: 25 Dec 2023
Discipline: Accounting, Finance, Business

Kanji & Co
Sydney, NSW
Closing: 24 Nov 2023
Discipline: All, Law

[Find out more](#)[Find out more](#)

INTERN - B2B TECHNOLOGY ADVISORY SALES GARTNER



PAID SALES INTERNSHIP.

The sales internship is a comprehensive program in one of Gartner's high-performing sales channels. Interns work alongside a team of full-time sales associates, who manage a group of named accounts, retain and grow existing client relationships, and forge relationships with prospective clients.

ou'll advance your career through a best-in-class sales internship program. Learn to apply strategic thinking and relationship building to engage executives on using Gartner's research and advisory services to solve their most pressing business challenges around the world.

The skills and experience you will bring to this role include the following:

- Available for 9 weeks internship: Monday, 11 December 23 to Friday, 9 February 24
- Graduating between June 2024 to December 2024
- Enrollment in a Bachelor's degree program with expected graduation date within a year of successfully completing the internship program

Applications close: 30 November 2023

[Find out more](#)

CASUAL WORK: SEASONAL WAREHOUSE ASSISTANTS

LOOKING FOR EXTRA WORK FOR CHRISTMAS/SUMMER?

\$25-\$27 PER HOUR + LOADING (25%-40%)

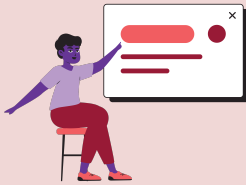
As a Seasonal Warehouse Assistant for JD Sports, you will be required to ensure smooth operation of the Distribution Centre by picking, scanning and packing inventory in an accurate and timely manner in the lead up to our busiest time of year!

This role will have you working at our Distribution Centre based in Homebush across either the AM (6am-2pm) or PM Shift (2.30pm-10.30pm) Monday to Friday. Please note, we require full-time availability for this contract period.



All Seasonal Warehouse Contracts will be commencing in November and ending on 3rd of February 2024, with opportunity to go permanent.

[Find out more](#)



General Enquires

(02) 4736 0424 (Tuesday-Thursday Only)
careers@westernsydney.edu.au

Stay Connected

