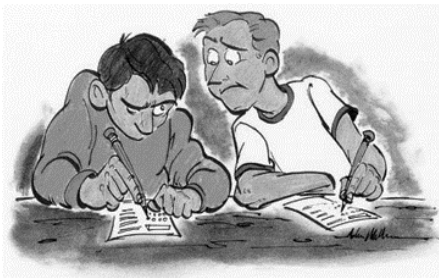


## MISCONDUCT MATTERS

### What is academic misconduct?

Academic misconduct is student conduct that breaches any academic policy of WSU or undermines or puts at risk the academic integrity of any course, unit of study or assessment (including exams) or WSU's reputation.

- ✦ Examples are included in the Dictionary in Part 10 of the [Student Misconduct Rule](#)



### What are WSU's rules on academic misconduct?

- ✦ Allegations are dealt with according to the rules and procedures outlined in the [Student Misconduct Rule](#).
- ✦ WSU distinguishes between academic misconduct and inappropriate behaviour, which is dealt with under the [Inappropriate Behaviour Guidelines](#).

Note: it may be possible to have your matter dealt with as 'inappropriate behaviour' rather than 'misconduct'

### What will happen if you are involved in an academic misconduct matter?

1. Student misconduct or inappropriate behaviour is reported
2. WSU investigates if there is any substance to the report ("preliminary investigation")
3. WSU invites the student to an interview or decides the matters "on the papers"
4. The preliminary investigation is finalised and WSU will either:
  - dismiss the allegation or take no further action,
  - deal with the matter under the Inappropriate Behaviour Guidelines, or
  - impose "sanctions" (or penalties).

Note: there are different categories of sanctions that vary in seriousness, which are set out under Part 5 of the [Rule](#).

### What support can you receive during the academic misconduct investigation?

- ✦ The SLS cannot provide legal advice or representation in these matters but can provide you with information and may be able to refer you to external legal advice.
- ✦ You can contact the [Student Welfare Service](#) for support during the process, including advocacy, or the Student [Counselling Service](#).

## MISCONDUCT MATTERS

### What should you do in response to an allegation of academic misconduct?

- ✦ You need to respond to the allegation and should make every effort to attend any interview as the matter will be heard and decided in your absence if you do not attend without a reasonable excuse.

#### Before the interview

- ✦ Consider whether you admit or deny the misconduct, or parts of it.
- ✦ If you admit all or parts of the misconduct you can make an oral or written statement explaining your actions and asking for a sanction you think is fair.
- ✦ Try to clearly understand the basis of the allegation and gather any evidence you have to support your position.
- ✦ You can ask witnesses to give evidence on your behalf by requesting permission from WSU.
- ✦ Ask to have a support person with you at the interview.
- ✦ Ask for support, such as welfare or counselling support, to help manage your stress.

#### After your interview

- ✦ WSU will either dismiss the allegation, deal with it as inappropriate behaviour, or find misconduct and impose a penalty.
- ✦ WSU must provide you with a report after the hearing, including its findings, reasons, and any sanction.
- ✦ If you disagree with the decision, you have the right to appeal to the Office of Governance Services within 20 days of the decision

### How can you appeal a finding of academic misconduct?

If you wish to appeal a decision you can:

1. Lodge a Notice of Appeal by completing the [Student Appeal Form here](#) and submitting it with any further supporting evidence to [studentmisconduct@westernsydney.edu.au](mailto:studentmisconduct@westernsydney.edu.au).
2. You must submit the form within 20 business days of receiving the notice of misconduct decision.
3. The form must specify and explain:
  - a. the finding or sanction under appeal
  - b. the ground/s or basis for your appeal, e.g. no procedural fairness, new or fresh evidence, or inappropriate sanctions
  - c. details and copies of any new evidence, where applicable.

Note: You need to think carefully about what grounds of appeal you rely on because the Appeals Committee will only consider your appeal based on the grounds you select and write about in the form.

#### Further links

- ✦ [WSU Student Misconduct Rule webpage](#)
- ✦ [WSU Student Misconduct Rule FAQs](#)
- ✦ [Student Welfare Service](#)
- ✦ [Counselling Service](#)
- ✦ [Student Legal Service](#)
- ✦ [studentmisconduct@westernsydney.edu.au](mailto:studentmisconduct@westernsydney.edu.au)