

WESTERN SYDNEY UNIVERSITY



MENTOR-CSE

KICKSTART YOUR PROFESSIONAL CAREER AS A CIVIL AND STRUCTURAL ENGINEER

A course by Charles Rickard and the Centre for Infrastructure Engineering
at Western Sydney University.

Introduction

Why attend this specialist course?

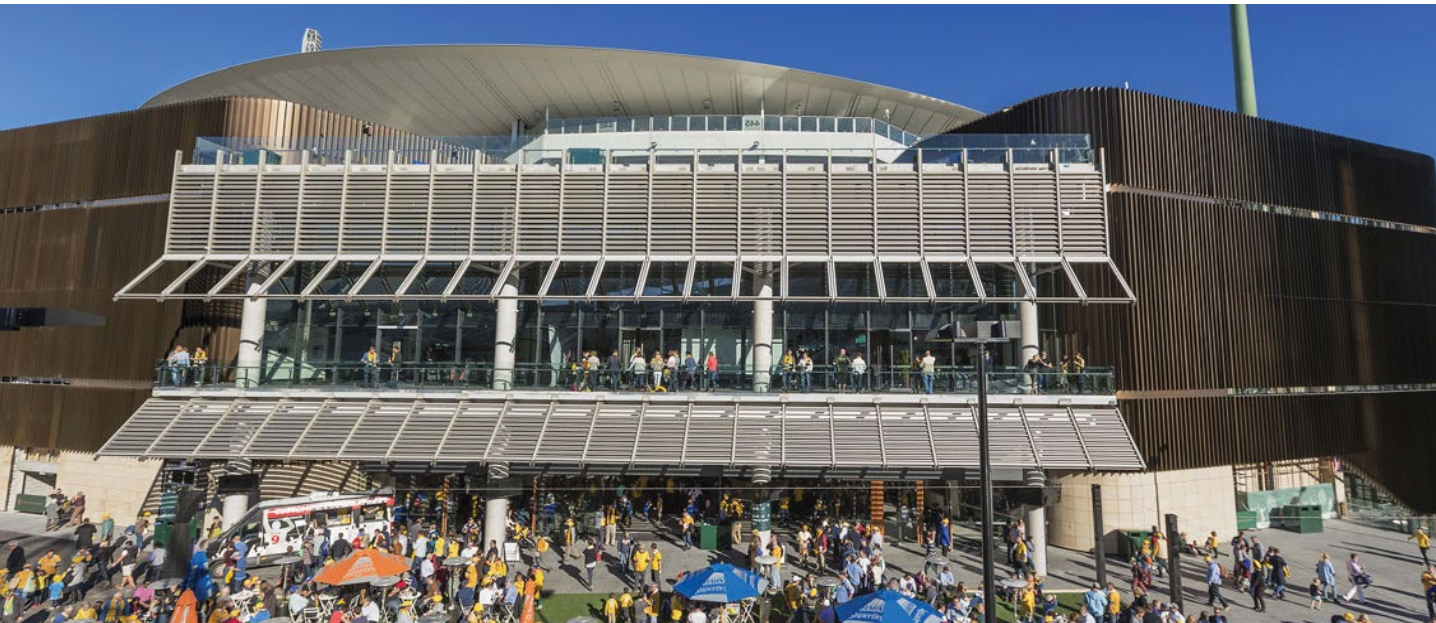
Transitioning from studies to working life can be challenging: graduates are often expected to gain industry skills on the job. This course will equip students reaching the end of their studies with industry knowledge and business acumen, so they can enter the workforce with confidence.

- ✓ **Get job-ready quicker**
While this course is designed for graduates, it is also available to students looking to make a head start on their careers.

It teaches the below skills:

- How to manage real projects across the wide spectrum of engineering work
- The hands-on skills required to tackle critical tasks in real-life situations. These sometimes take years to learn and are often only learnt through unfortunate but simple mistakes
- How to identify and deal effectively with challenges, data, elements, brief requirements and potential issues faced on different types of projects
- How to best progress in an engineering career: understanding the management and interpersonal skills required in the consulting environment
- Determining future learning priorities suited to your career aspirations and the needs of engineering firms
- How to become a valued, high-performing employee that makes a worthy contribution to your workplace
- How to best consult with clients and use resources more effectively to inspire excellence, reduce liability and mitigate risk.

Fast track your post-graduate learning!



Above, new SCG North Stand: The external façade designed by Rickard Engineering for Townsend Group

✓ Build your professional network

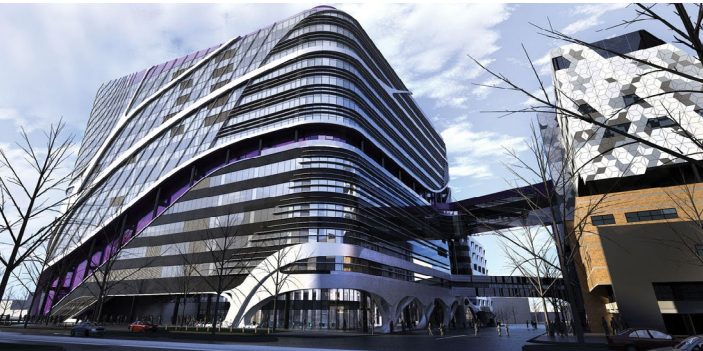
Students get the opportunity to collaborate with working professionals and learn about what it's like to be a graduate engineer in the civil and structural engineering industry.

✓ Gain further certification

Students will receive a Certificate of Completion to demonstrate their achievement upon finishing the course, helping them stand out in the competitive workforce when they graduate. You may even be able to receive credits towards future post-graduate degrees and courses. The scope of this is currently being determined.



Above, working with Australian 108, in Melbourne



Above, working with Minesco on the Victorian Comprehensive Cancer Centre

Course Outline

8-Week Course Outline

8 Mentor-CSE Teaching Units:

- Unit 1:** Assessment of fundamental issues
- Unit 2:** Key areas of design
- Unit 3:** Particular focus on temperature, shrinkage and soils
- Unit 4:** Identifying priorities in design to improve personal efficiency
- Unit 5:** Project process, individual roles and appropriate use of advanced analysis
- Unit 6:** Succeeding in the construction industry today
- Unit 7:** Project tutorial – working through the stages of a typical project
- Unit 8:** Course review – question and answer tutorial

Supplementary Reading List – available to all students on the course.
Charles Rickard will be assisted on the course by a WSU Tutor, Mr Kamyar Kildashti Komsari for personalised support for the students.

Key information

This course is taught out of business hours to accommodate working professionals.

- Location:** **WSU Parramatta City Campus (169 Macquarie Street, Parramatta opposite The Parramatta Rail and Bus interchange), Room PC-01.6.21 (LS)**
- Dates:** **30 October, 2019 – 4 December, 2019**
- Time:** **5:30PM – 8:30PM**
- Cost:** **\$2800 (GST incl.)**

About Charles Rickard

Charles is one of Australia's leading structural engineers. He has run his own engineering practice for 34 years and worked on some of the world's most interesting and significant projects. He is an experienced leader, particularly well-known for his expertise in glass reinforced concrete and reinforced plastics. Charles previously held the role of NSW Chairman for the Institution of Structural Engineers, UK. He is also well-known for voicing strong views on the current standard of certification in the building industry in Australia. He was Chairman of the Multi Disciplinary Committee of Engineers Australia (2012-2015) which presented a formal report to the NSW Government in 2013. His career has taken him to 16 different countries around the world.

Charles graduated from Surrey University UK, with a Master of Science (Distinction) in Structural Engineering in 1975. He spent the next nine years based in the UK. His first job as a design/site engineer saw him work for major international contractor, Taylor Woodrow Group, on significant projects, including the Dubai Dry Dock and North Sea Concrete Oil Platforms.

Before emigrating to Australia, and establishing his own firm, Charles also worked for large consulting businesses on projects across Europe and the Middle East – from large shopping complexes to iconic buildings. He even designed a new palace for the Emir of QATAR.

Since 1984, Charles has run his own consulting engineering practice. This overall experience has led to him become a well-known consultant in the fields of civil, structural and façade engineering. In addition, he has built his reputation in building diagnostics and building dispute resolution. His work has also provided both project and construction management to different clients. Two projects of note are the Pacific Square Shopping Centre in Maroubra and the façade of the Southern Hemisphere's tallest building, Australia 108, in Melbourne.

Learn more about Charles Rickard:

[Click here to see some of Charles' recent projects](#)

[Click here to see some of Charles' recently published articles and radio interviews](#)

Enrol Now!

Transform your industry knowledge and become more employable!

To register for MENTOR-CSE please visit:

<https://www.westernsydney.edu.au/cie/mentor-cse/registration>

**Centre for Infrastructure Engineering
Western Sydney University**

Locked Bag 1797
Penrith NSW 2747

**Charles Rickard
Rickard Engineering**

Suite 5, 121 Military Road
Neutral Bay NSW 2089
rickardengineering.com

**WESTERN SYDNEY
UNIVERSITY**

