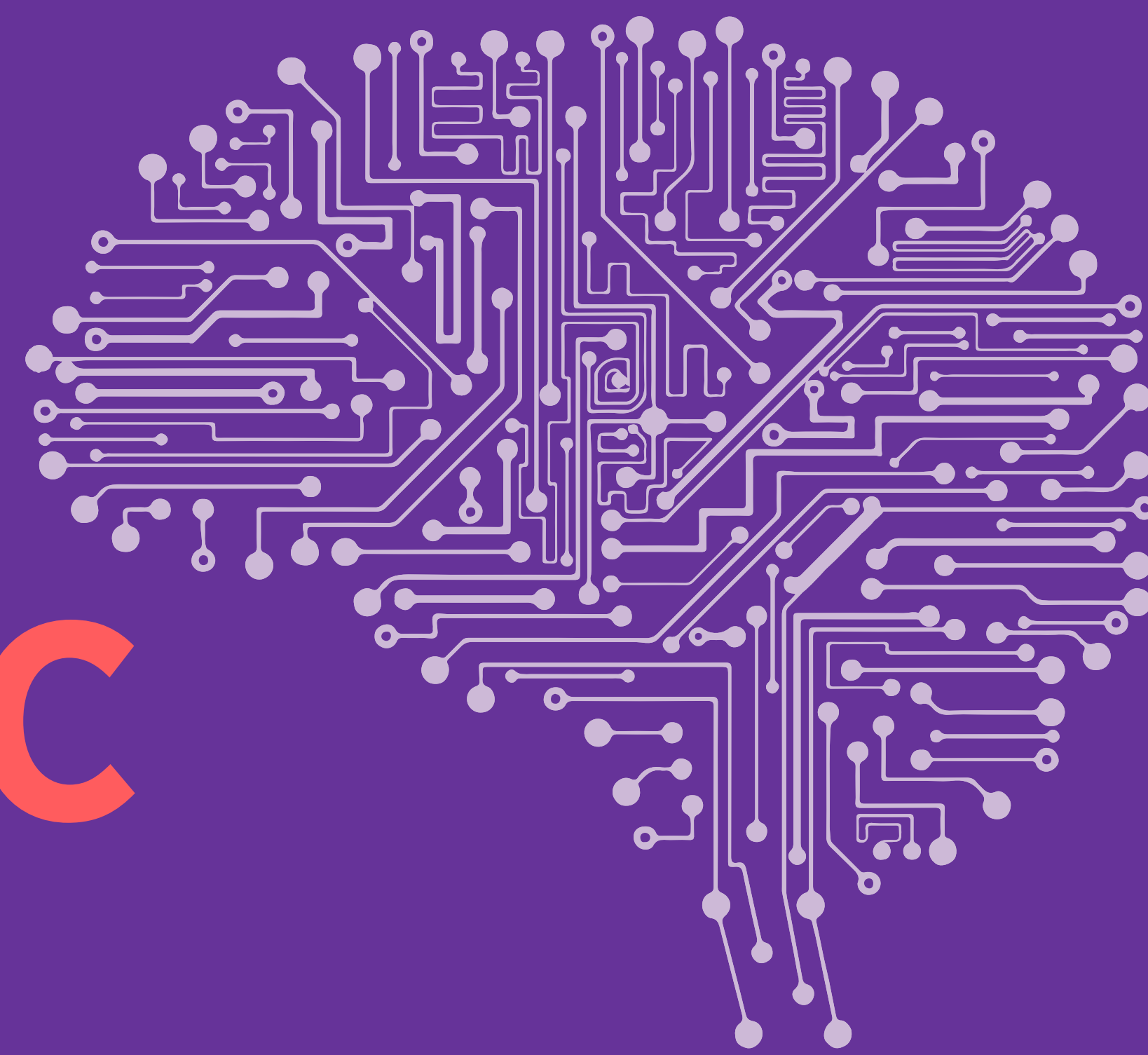


MASTER OF NEUROMORPHIC ENGINEERING



Developed by the International Centre for Neuromorphic Systems (ICNS) at Western Sydney University, the Master of Neuromorphic Engineering program is a world-first.

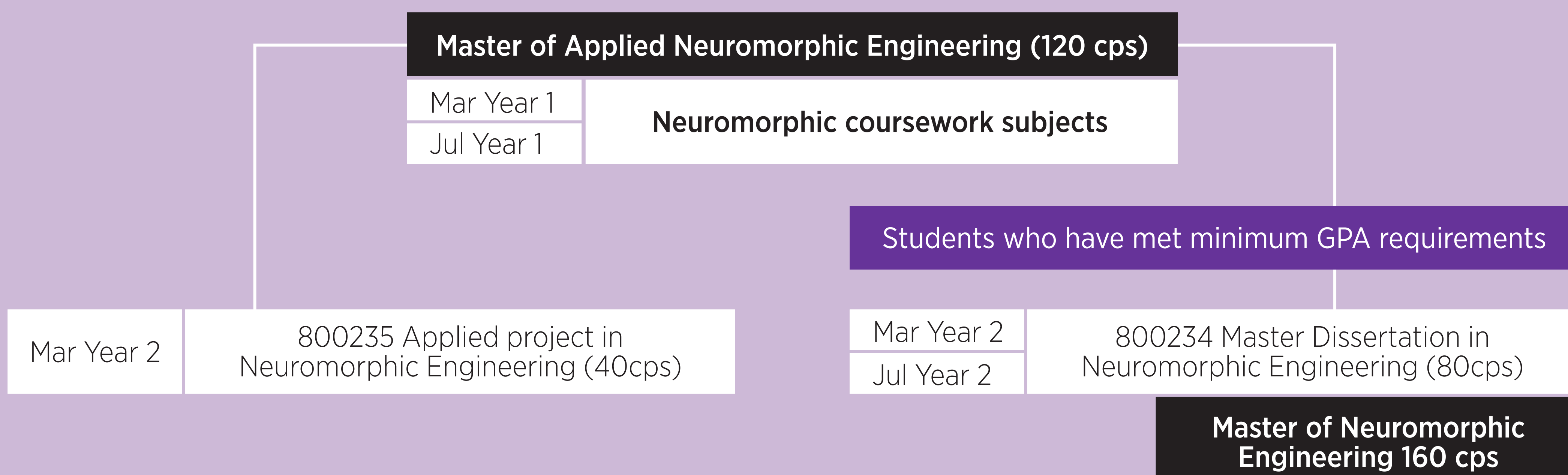
The Master of Neuromorphic Engineering (MoNE) program at Western Sydney University is designed to prepare students for suitable industry opportunities or a research pathway leading to a Doctoral degree.

It also provides opportunities for industry professionals to upskill and strengthen their proficiency across the rapidly growing domestic and international demand for alternative interdisciplinary technologies, such as bio-inspired agile sensory systems, smart edge devices, and brain inspired high-performance computational platforms.

Combining subjects from electrical engineering, computer science, neuroscience and mathematics, students are introduced to state-of-the-art solutions in neuromorphic hardware, sensors and algorithms in a highly structured way that increases their acumen for approaching new situations with creativity and enterprise.

As global leaders in Neuromorphic Engineering, ICNS will set an exceptional international standard of teaching and by offering the program exclusively on campus, students will have the benefit of interacting with these experts on a daily basis.

MASTER OF NEUROMORPHIC ENGINEERING



WESTERN SYDNEY
UNIVERSITY



FOR MORE INFORMATION [LINK HERE](#)

ONLINE APPLICATIONS [LINK HERE](#)

CONTACT: Dr Bharath Ramesh
B.Ramesh@westernsydney.edu.au