

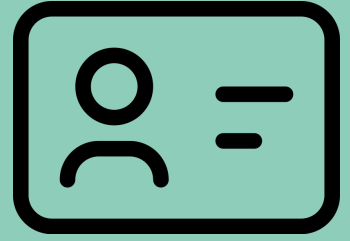
Road Safety: Learners Drivers Licences

Quick Facts

1 Who can apply for a licence?

In order to apply for your Learners driver's licence you must:

- Be at least 16 years of age
- Pass the Driver's Knowledge Test (DKT)
- Provide identity documents
- Pass the relevant health checks (such as an eye test)



2 What are your obligations on your Learners licence?

L Plate Drivers have several obligations including:

- They must be supervised at all times by a fully licenced driver
- Clearly display your L plates at the front and rear of the vehicle at all times while driving;
- 90 Km/hr maximum speed limit
- 0.00 Blood Alcohol Content (BAC) all times while driving
- Cannot tow a trailer or any another vehicle.



3 What is a demerit point?

Demerit points are penalty points that you accumulate while driving for the offences you commit. All demerit point offences also have an associated fine that you must pay. All drivers begin with 0 points. However, if you continue to gain demerit points, you may face a licence suspension.

4 What is my demerit point limit on a Learners licence?

You will have a different maximum demerit point limit depending on the type of licence you hold. Learner and P1 (Red P) Plate drivers have a **4 demerit point limit**.

5 What happens if I get caught speeding?

L Plate and P Plate drivers can earn more demerit points than fully licenced drivers for the same offence. For example, L and P Plate drivers will receive 4 demerit points for speeding 1-10km/h over the speed limit where a fully licenced driver would receive 1 point. That means that if an L Plate driver or P1 (Red P) Plate Driver gets caught speeding even once, it can result in an immediate licence suspension.

6 Can anyone holding a licence supervise a learner whilst driving?

No. Only a fully licenced driver can supervise a learner.

7 How long do I have to remain on my Learners?

Usually, you must hold your L Plate licence for at least 12 months and accumulate 120 hours of supervised driving experience. A minimum of 20 hours of those driving hours must be at night. After this, you can sit for your driving test to progress to your provisional (P) licence.

If you are over the age of 25, you are able to progress to a Hazard Perception Test (HPT) and driving test at any point that you feel ready.



Can I drive any car while on my Learners?

8

While you are on your Learners licence, you are restricted to driving vehicles with a GVM below 4500kg. You cannot drive high performance vehicles. Furthermore, you must ensure that you only drive vehicles that you are licenced to drive. That is, if you have a Learners licence to drive a car, you cannot drive a moped/motorbike or truck.

Where can I get more information and help?

9

You can find further information about licences on the [Service NSW](#) website.

If you require legal advice, you can contact these free services:

- [LawAccess NSW](#) T. 1300 888 529
- Your [local community legal centre](#)
- [Youth Law Australia](#) T. 1800 950 570



Western Sydney University Justice Clinic

For further details on the WSU Justice Clinic, please visit the website.

If you are a WSU student, contact the WSU Student Legal Service at studentlegalservices@westernsydney.edu.au for more guidance.