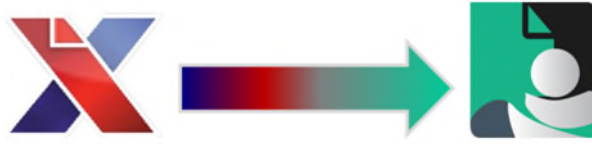
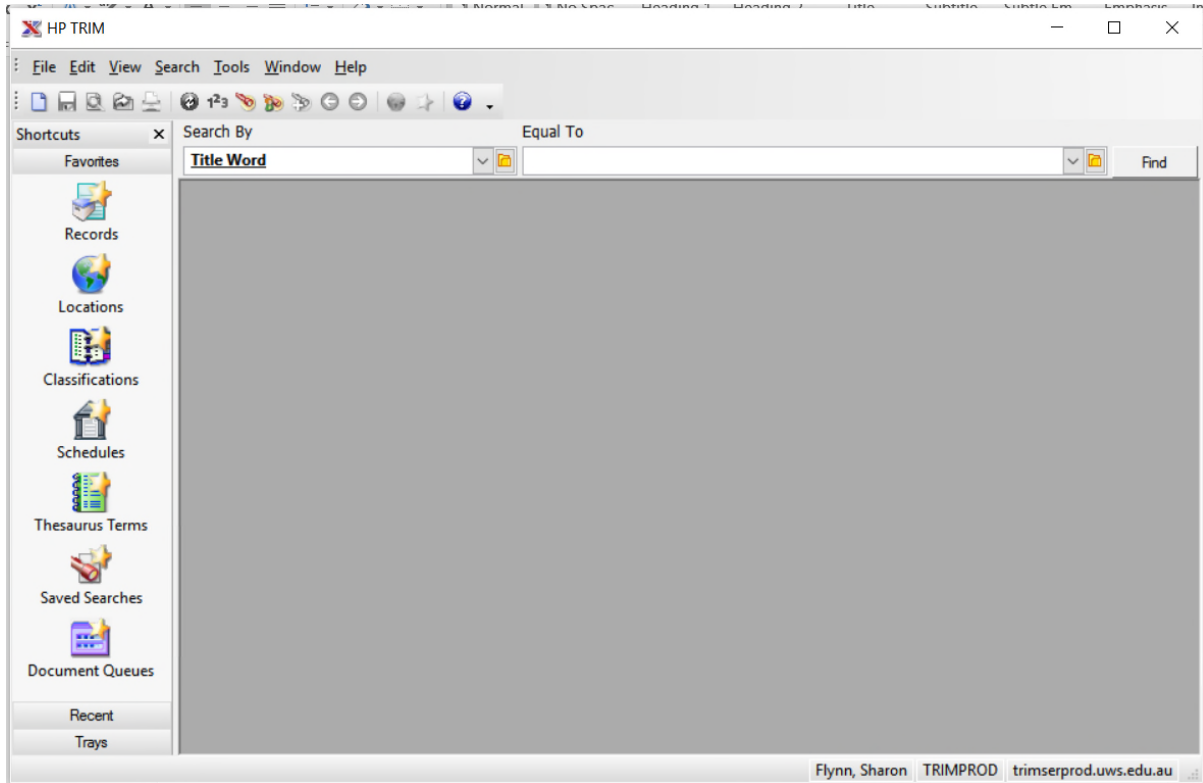


TRIM 7.3 to TRIM (HPE Content Manager) 9.1

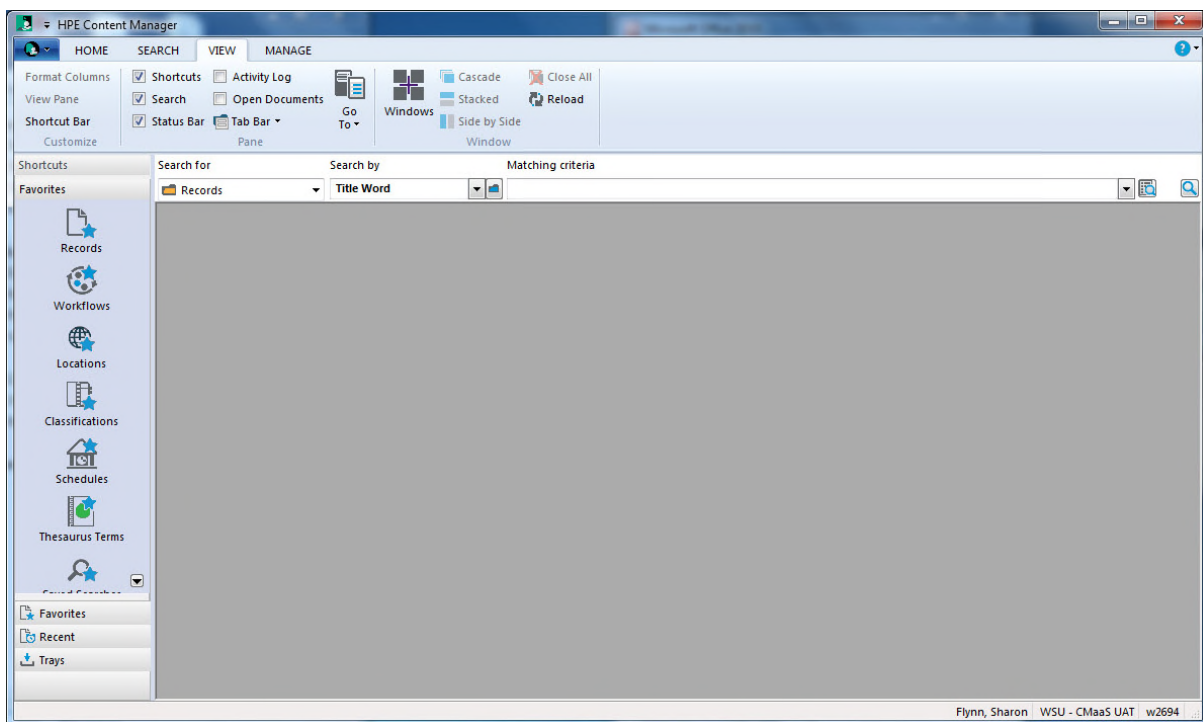
What's different?



TRIM 7.3 Start screen

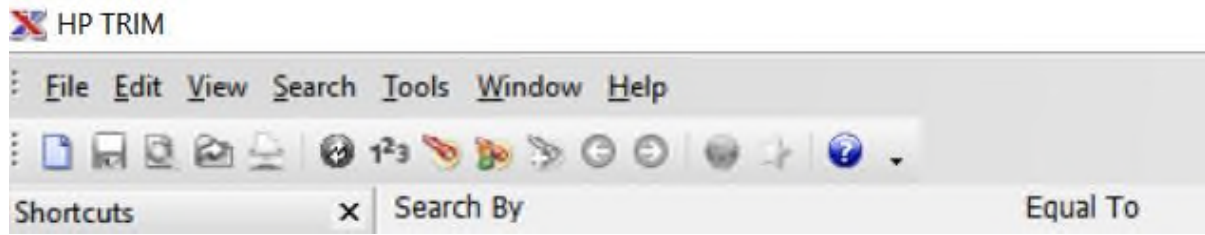


TRIM 9.1 Start screen

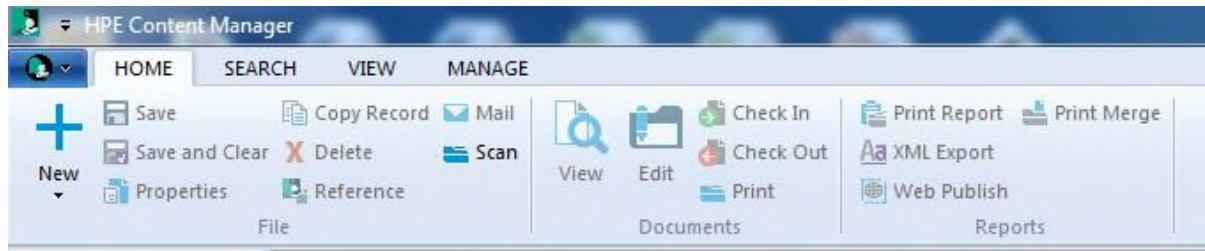


TRIM 7.3 to TRIM (HPE Content Manager) 9.1

TRIM 7.3 Menus

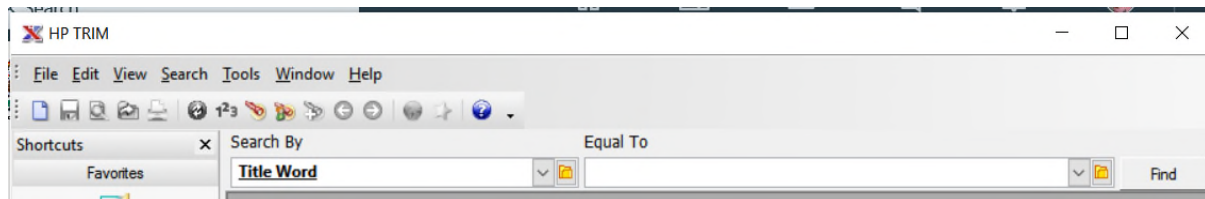


TRIM 9.1 Ribbon

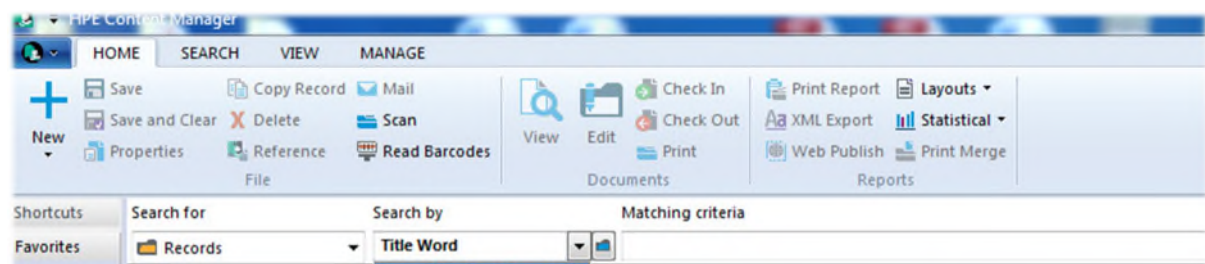


SEARCH

TRIM 7.3 Quick Search

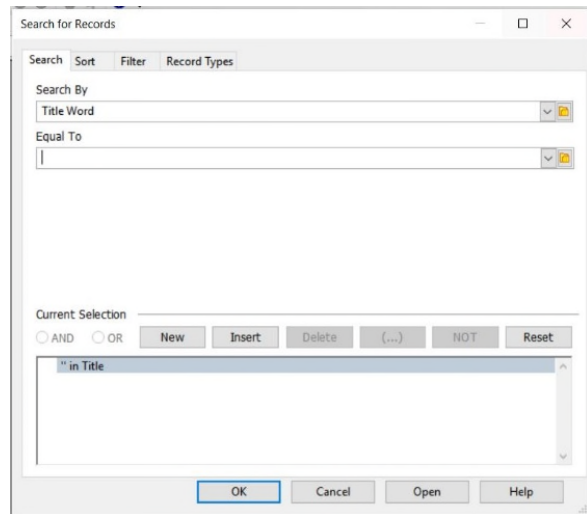
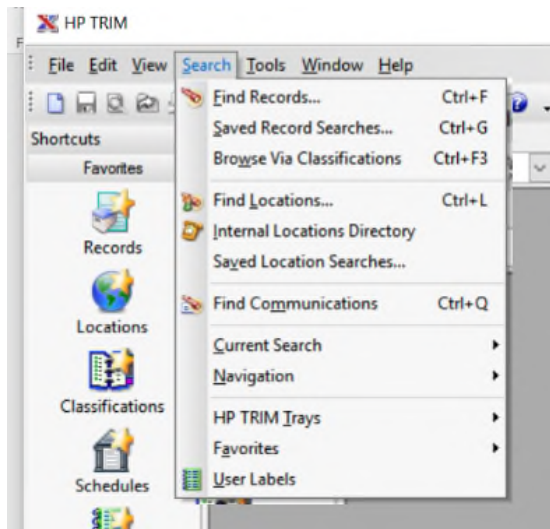


TRIM 9.1 Quick Search

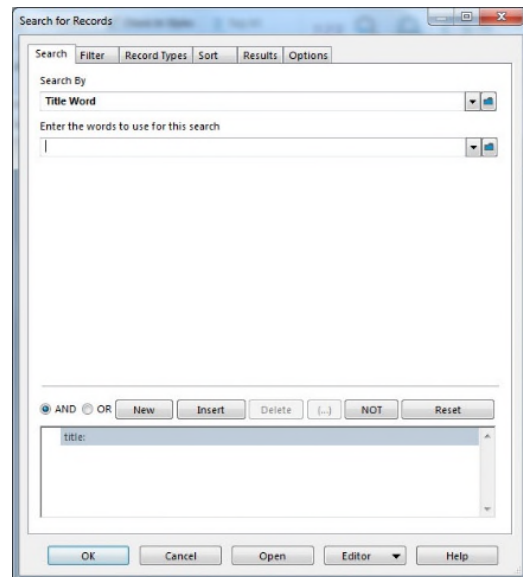
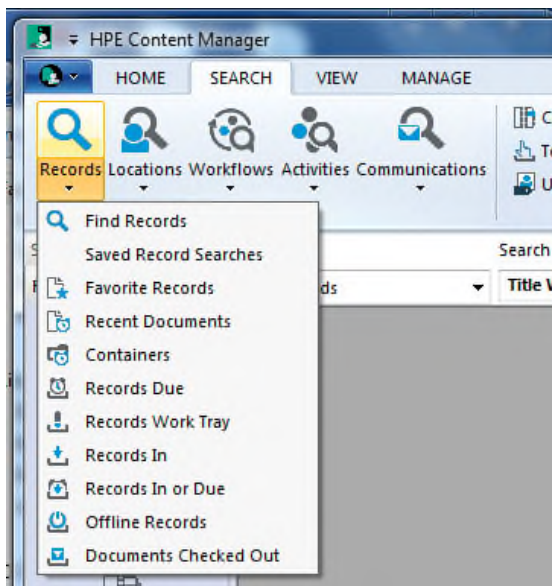
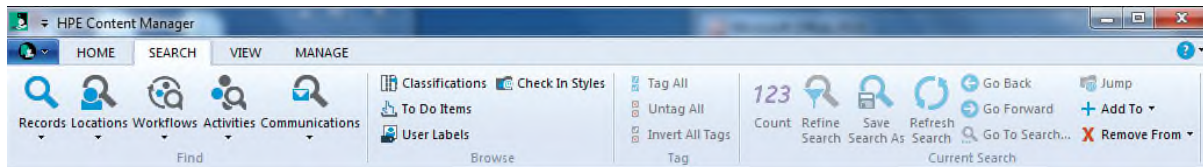


TRIM 7.3 to TRIM (HPE Content Manager) 9.1

TRIM 7.3 Search Menu



TRIM 9.1 Search Ribbon

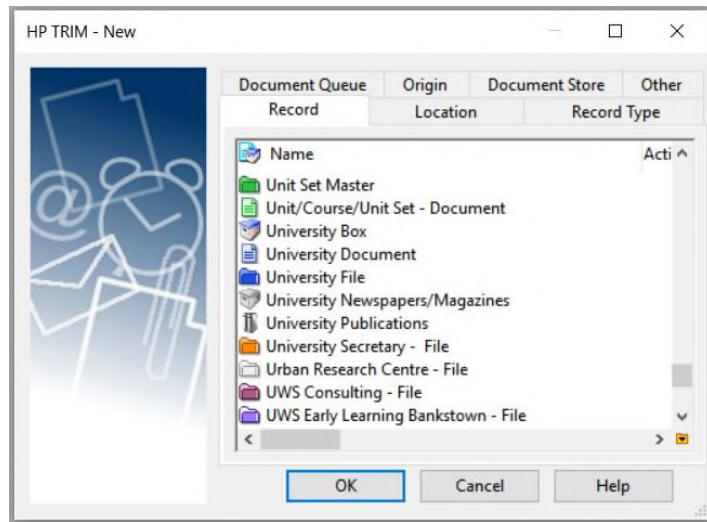
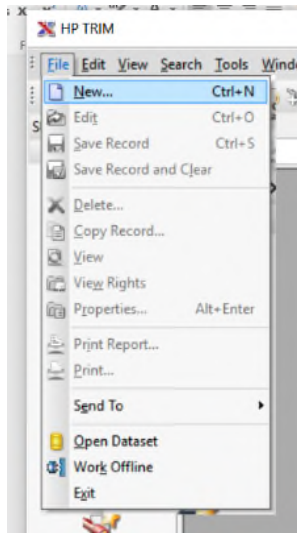


Note: Ctrl F will also work

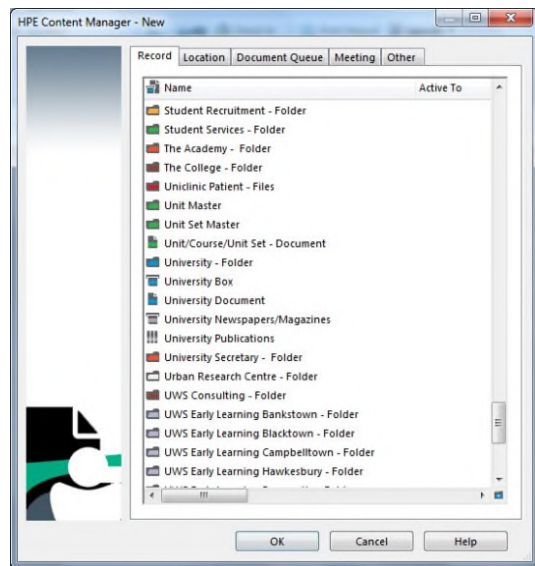
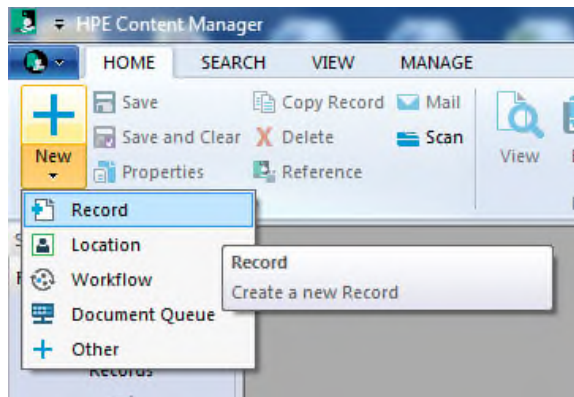
TRIM 7.3 to TRIM (HPE Content Manager) 9.1

CREATE RECORD

TRIM 7.3



TRIM 9.1



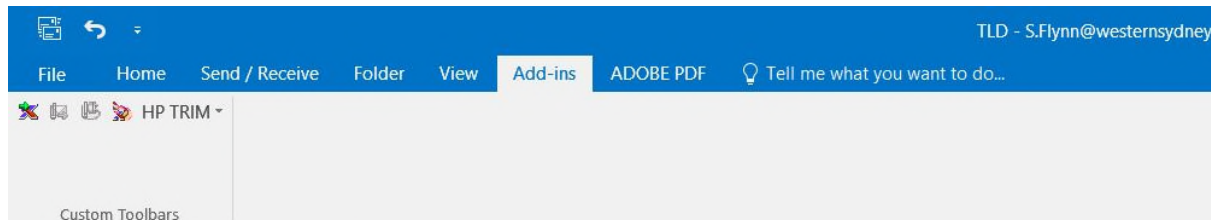
Note: Ctrl F will also work

TRIM 7.3 to TRIM (HPE Content Manager) 9.1

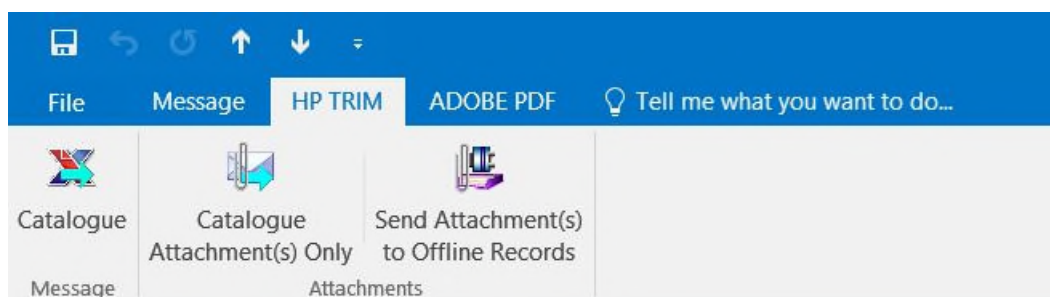
OUTLOOK INTEGRATION

TRIM 7.3

Add-ins tab in Outlook inbox

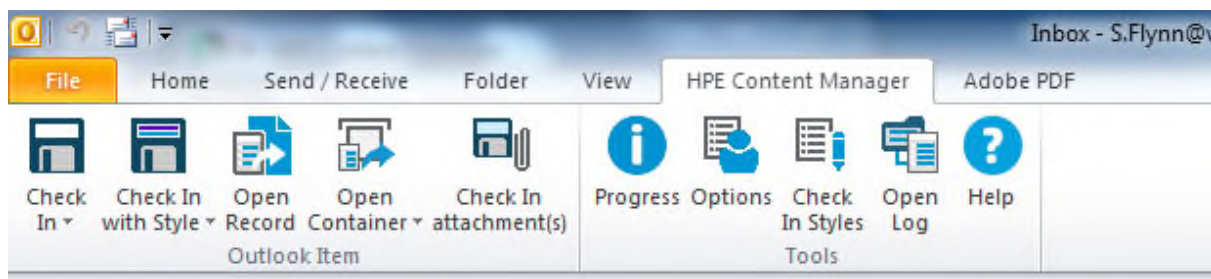


HP TRIM tab in Outlook message

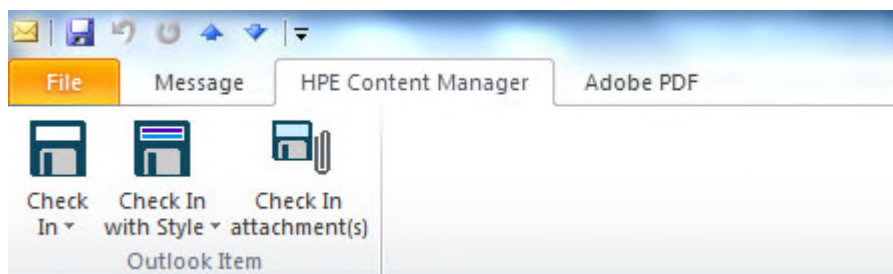


TRIM 9.1

HPE Content Manager tab in Outlook inbox



HPE Content Manager tab in Outlook message



Note: More information about using Check In Styles to link Outlook folders will be available from RAMS separately.