

# PrintSmart @ Western



## How to Setup your Mac to Print

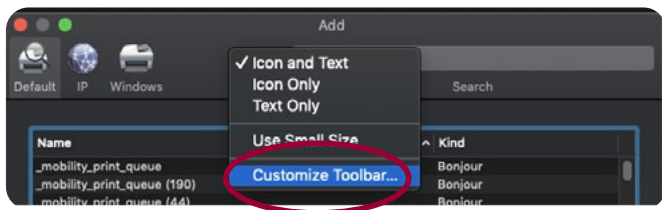
This option is available for WSU Students and Staff that wish to print documents whilst connected to the WSU wired network on a WSU managed Mac. You will need to set your Mac up the first time you use PrintSmart.

## Download and Install the Mac Print Driver

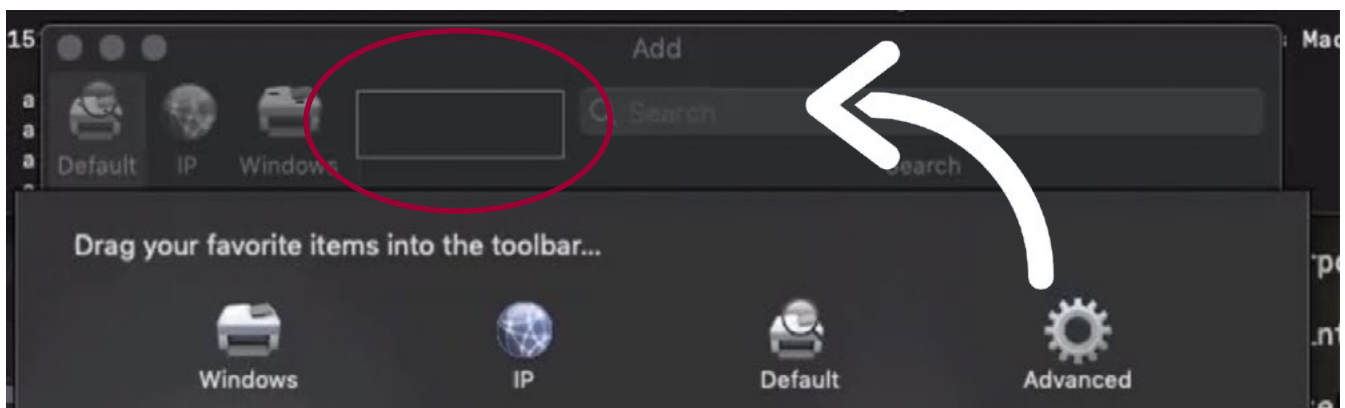


- 1 Please download the **Mac Print Driver** [here](#).
- 2 Install the **Fuji Xerox Print Driver for Mac OS X Installer.pkg** file by double clicking.

## Getting your Mac Setup



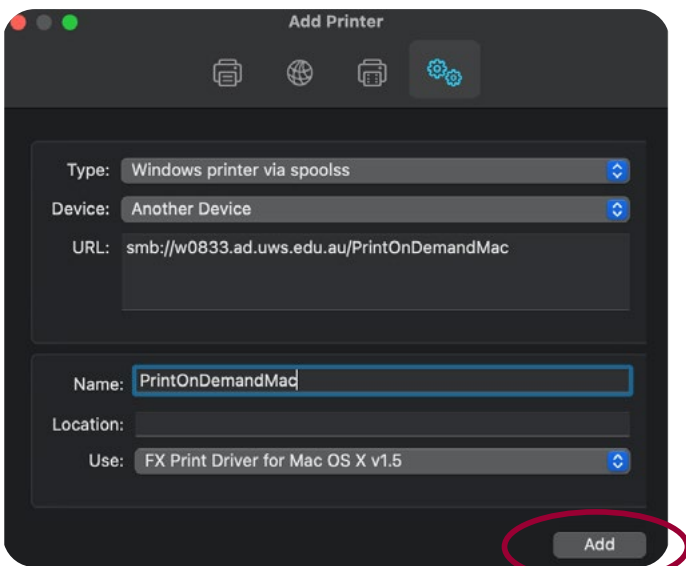
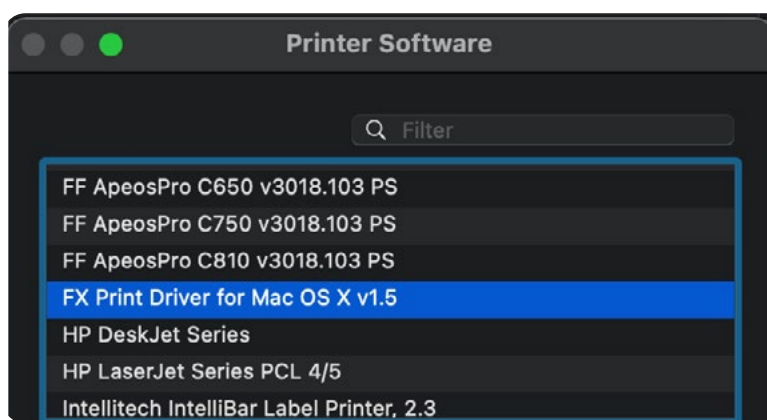
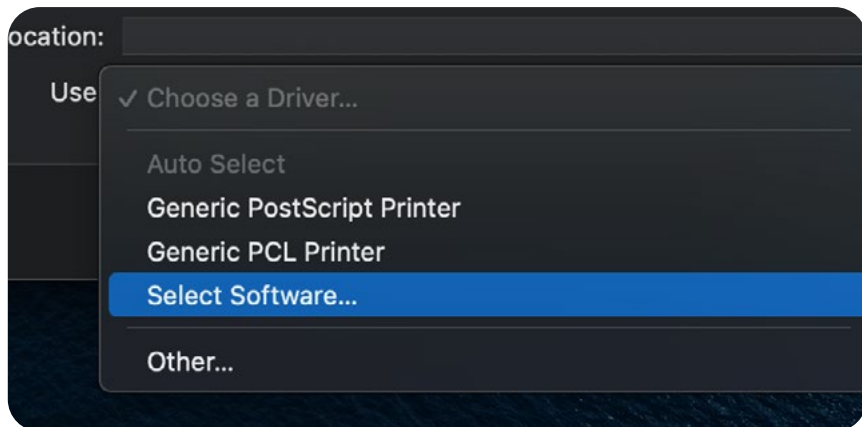
- 1 Go to **System Preferences** > Printers and Scanners > + (plus sign).
- 2 Right or Control-click on the space next to the Search bar and choose **Customise Toolbar**.
- 3 Drag the **Advanced** icon into the space above it as shown, then click **Done**. See below.



# PrintSmart @ Western



## Getting your Mac Setup - continued



4 Next, click the Toolbar's new Advanced icon then set Type as **Windows Printer via Spoolss**.

5 Populate the URL field with: **smb://w0833.ad.uws.edu.au/PrintOnDemandMac**

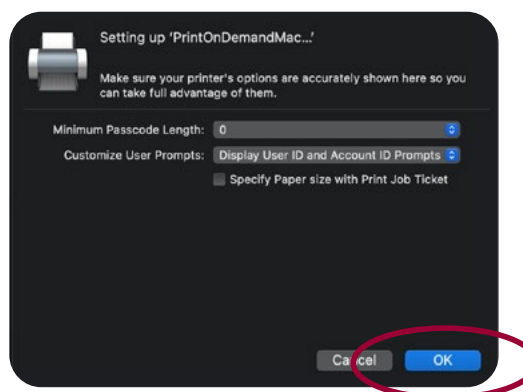
6 Populate the name field with **PrintOnDemandMac**.

7 In the Use drop-down bar navigate to **Select Software**.

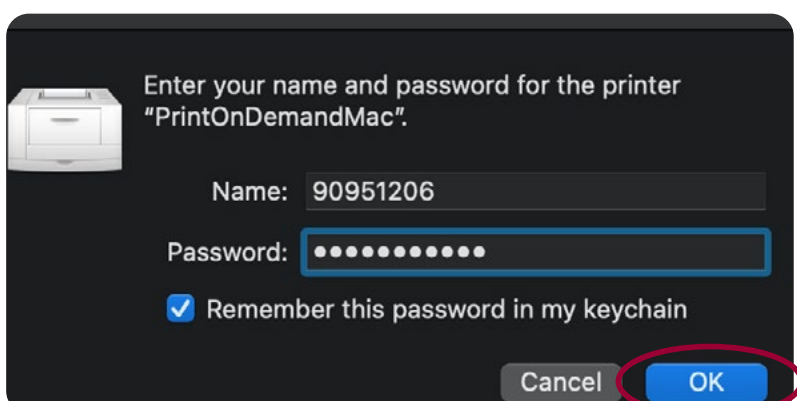
8 Choose the driver **FX Print Driver for MAC OS X v1.5**. Then click **OK**.

9 Click **Add**.

10 Finally, click **OK**.



## Ready to PrintSmart!



1 You can now send print jobs to the **PrintOnDemandMac** queue. First time you do this you maybe prompted to enter your network credentials. Please enter your username and then your usual network password. Then Click **OK**.

You can also store this in your keychain.