

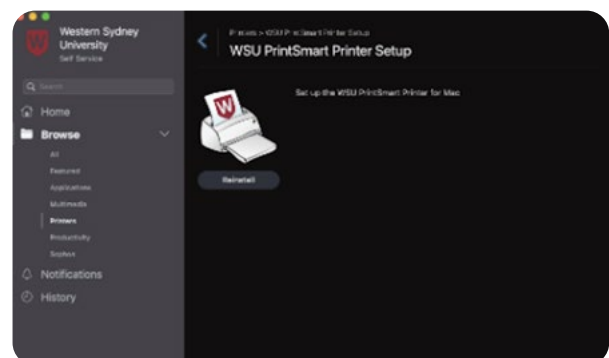
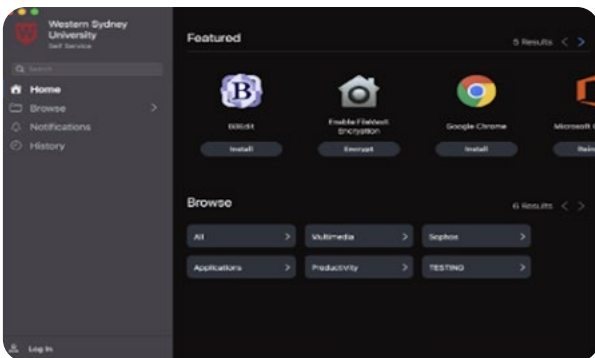
PrintSmart @ Western



How to Setup your Mac to Print

You will need to set your Mac up the first time that you would like to use PrintSmart. This is only for Mac's that are University managed devices. Self serve is the preferred, more simple option.

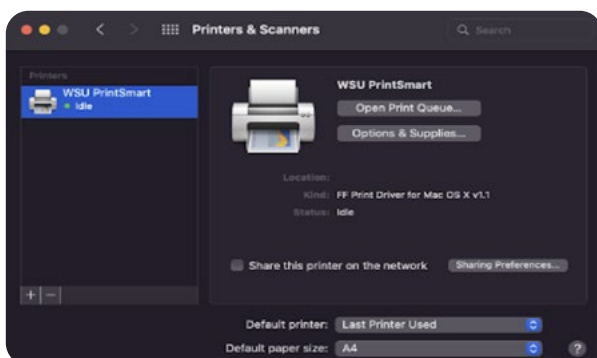
Self Service: Connecting your Mac



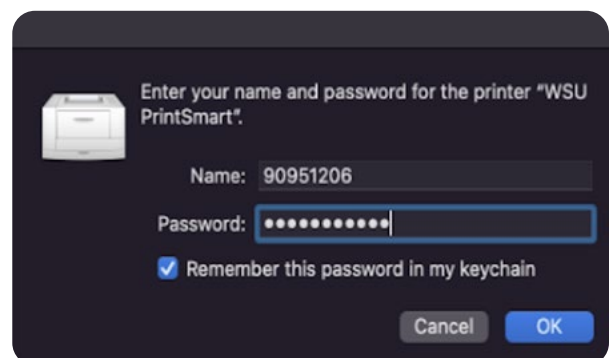
1 Locate the Self Service Portal on your Mac.

2 Navigate to the Printers and select WSU Printer Setup. Click Install.

Self Service: You're Ready to Go!



1 You can now send print jobs to the printer.



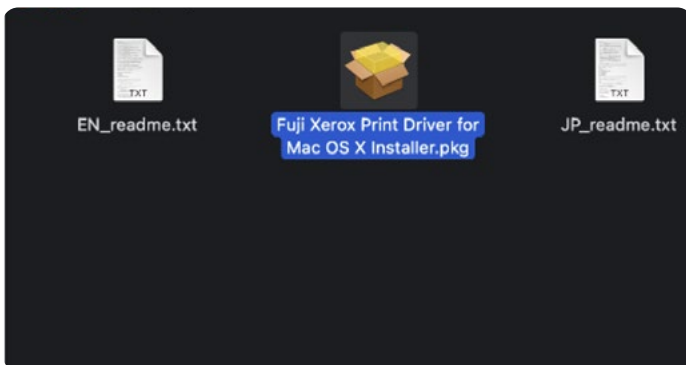
2 The first time you send a print job, you may be prompted to enter your network credentials. Please enter your 8 digit Western username and password. You can also store this in your keychain.

If you wish to set up your Mac manually, please see the below pages.

PrintSmart @ Western



Manual Setup: How to setup your Mac



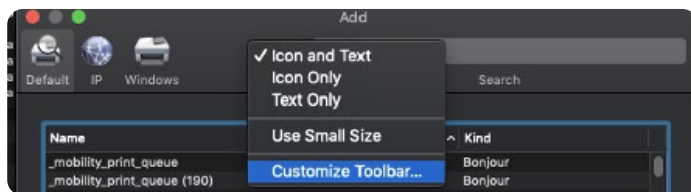
1

Download the **Mac Print Driver**:
<https://tinyurl.com/mubdxd2w>

2

Double click Fuji Xerox Print Driver package to begin the install.

Manual Setup: Getting your Mac Setup

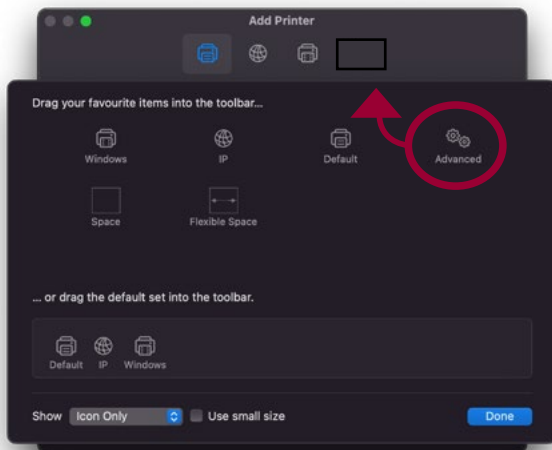


3

Go to **System Preferences** > Printers and Scanners > + (plus sign).

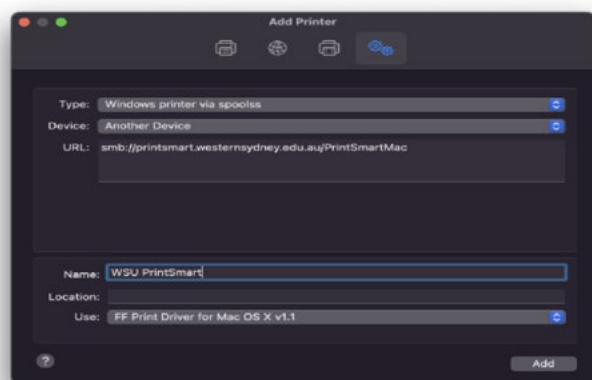
4

Right-click on the empty space above the Search bar and choose **Customize Toolbar**.



5

Drag the **Advanced** icon into the space above it as shown, then click **Done**.



6

Click the Toolbar's **Advanced** icon (the icon you just added) then set Type as **Windows Printer**

7

Type or copy/paste into the URL field with:
smb://printsmart.westernsydney.edu.au/PrintSmartMac

8

In name, type **WSU PrintSmart**

9

From the drop-down bar, choose the driver **FF Print Driver for MAC OS X v1.1**

10

Click **Add**.

PrintSmart @ Western

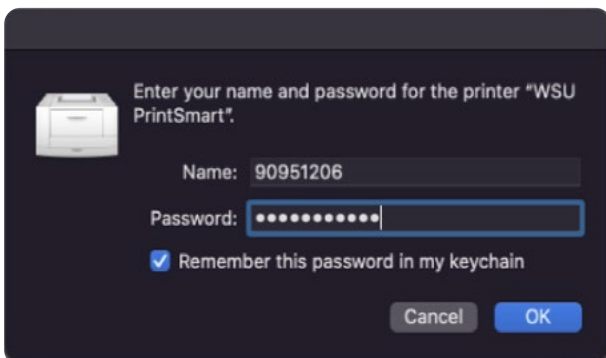


Manual Setup: Getting your Mac Setup - Continued...



11 Click **OK**.

Ready to PrintSmart!



You can now send print jobs to the **WSU PrintSmart** queue. First time you do this you may be prompted to enter your Western credentials. Please enter your 8 digit username and then your usual Western password.

You can also store this in your keychain.