



Evolving Conversations: Digitising School Outreach and Engaging with Opportunity

Presenters: Ciaran Smyth and Bronwyn Williams

Chair: Eileen Jensen

Presentations will be made available on the Conference website for your reference.

THIS ZOOM MEETING IS BEING RECORDED Western Sydney University will record this Zoom meeting for publishing on its website. As attendees, the transmission of your video and audio during the Zoom meeting is completely optional. If you do participate, your video and audio transmission will be automatically captured by the recording in addition to being accessible to other participants of the Zoom meeting.

Participation in the 'Chat', 'Question and Answer' and/or 'Poll' sections of the Zoom meeting is completely optional. By participating in the Chat you consent to the information shared in these sections being collected and used by Western Sydney University for learning purposes and to build a catalogue of 'Frequently Asked Questions' for the benefit of other prospective students.

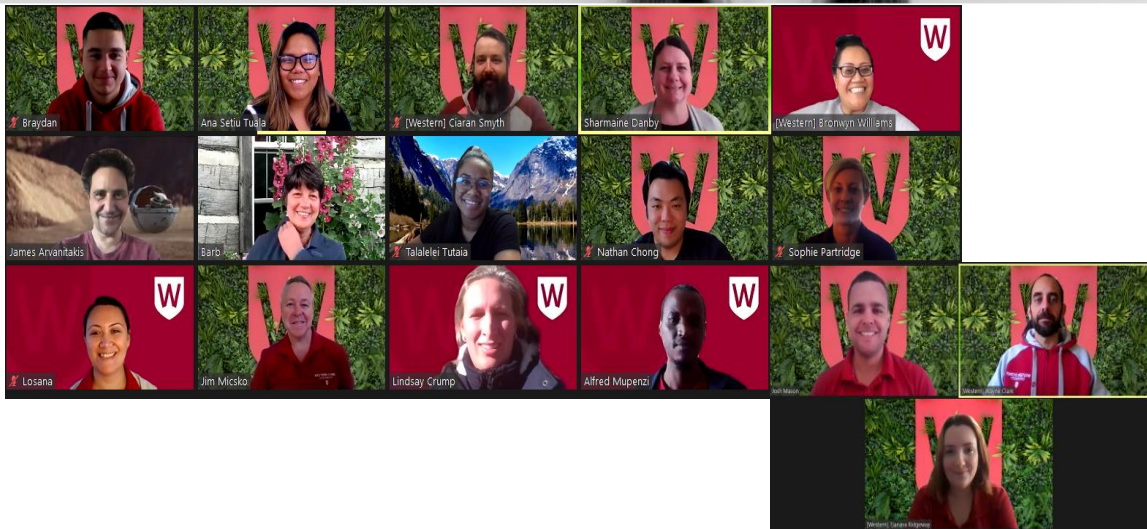
Any personal information collected by Western Sydney University during the Zoom meeting will be handled in accordance with its [Privacy Policy](#) and [Privacy Management Plan](#) which can be accessed online at https://www.westernsydney.edu.au/policy/policy_dds

WESTERN
OUR NEW NORMAL



Evolving Conversations: Digitising School Outreach and Engaging with Opportunity

WESTERN
OUR NEW NORMAL



WESTERN

OUR NEW NORMAL



OVERVIEW

- Who are we?
- What do we do?
- How did COVID impact our operations
- How did we respond?
- Lessons and learnings
- Q&A

WESTERN

OUR NEW NORMAL



WHO ARE WE?

**Fast Forward –
Secondary students**

**First Foot Forward –
Primary students**

**Pasifika Achievement To Higher Education –
Primary and High school students, university
students and community**



WESTERN OUR NEW NORMAL



WHO ARE WE?

Refugee, New and Emerging Communities - High school students, university students and community

Pathways to Dreaming - Secondary students

Heartbeat - Primary students



WESTERN OUR NEW NORMAL



200 high schools (110 intensively)



500+ activities delivered



84 primary schools



50,000+ student interactions



6 ongoing programs



4,000+ influencer interactions

WESTERN

OUR NEW NORMAL



ENGAGEMENT OBJECTIVES

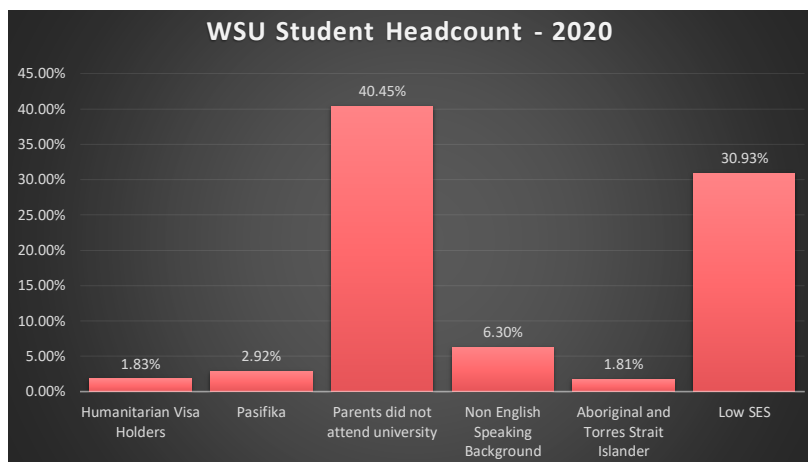
1. Empower school students, their families and teachers with the knowledge, skills and confidence to progress and succeed with further education.
2. Increase participation amongst key target groups including low socio-economic, Aboriginal and Torres Strait Islander, Pacific, and Refugee and Asylum seeker students in tertiary education and at Western Sydney University.
3. Build and grow collaborative stakeholder relationships with primary schools, high schools and community organisations in our region, creating productive and mutually beneficial partnerships.
4. Develop and deliver high quality offerings and programs that are sector-leading and best practice in engaging prospective students and influencers, and create positive impact amongst Western Sydney communities.
5. Develop and utilise a cohesive base of data, research and evidence on the school sector and on Engagement activities in order to continuously improve and enhance engagement work.

WESTERN

OUR NEW NORMAL



WHO COMES TO WESTERN?



Source: Enrolments Tracking

WESTERN

OUR NEW NORMAL



In 2019 **785** out of **1025** Year 12 FF students were made an offer to study at university (1662 different offers) – **77%** of all program participants. **634** students received at least one offer to WSU – **62%** of all program participants.

Nearly **34%** Pathways to Dreaming participants enrolled at Western to date in 2020

Over **600** students participated in the Heartbeat program with **90%** reporting a positive attitude towards HE

Over **5,000** students participated in the First Foot program, with **170** activities delivered and **87%** of students reporting they would like to go to University once they finish school

22 activities for refugee and asylum seeker students reaching more than **600** students, with students successfully supported into enrolling at Western and achieving scholarships

PATHE program delivered 111 x in school workshops across **1728** students from years 5-12 from 37 schools with **76%** improvement in confidence to attend higher or further education

PRE COVID OUTCOMES

WESTERN

OUR NEW NORMAL



PRE COVID ENGAGEMENT

Among all programs

IN SCHOOL ACTIVITIES

Consultations, Workshops, Mentoring

ON CAMPUS EXPERIENCES

Taster days, Uni Days, Check It Out
Campus Tours

MAJOR EVENTS

Welcome to Western
Year 12 Conference
Celebrate Pasifika
NEC Community Forum
Pathways End of Year Event

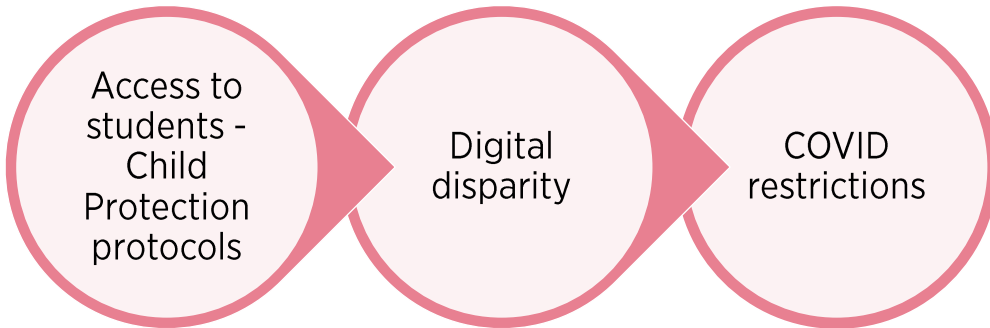


WESTERN

OUR NEW NORMAL



IDENTIFIED PROBLEMS



WESTERN

OUR NEW NORMAL



HOW DID WE RESPOND?



Professional Development and learning



Team work

Feedback from stakeholders



WESTERN OUR NEW NORMAL



Information For Teachers

Welcome to Pathways to Dreaming

The Pathways to Dreaming team have developed a suite of resources including recorded webinar sessions and associated workbooks for the use of students involved in the Pathways to Dreaming program. We hope you find these resources useful.

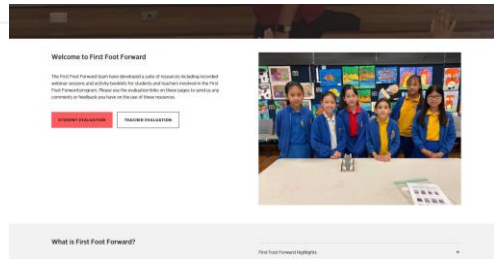
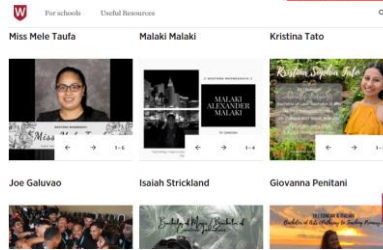
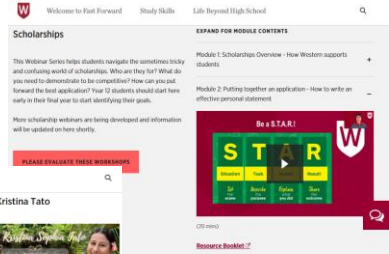
What is Pathways to Dreaming?

Indigenous Education is a key priority of Western Sydney University. Working with Aboriginal and Torres Strait Islander Elders and educators, teachers, parents, families and students, we aim to support you to choose the path that's right for you. We provide information and advice on all the opportunities going to University holds in store.

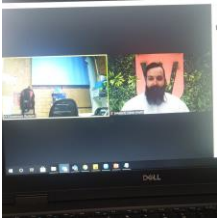


Yarning with the mob

HOW DID WE RESPOND?



WESTERN OUR NEW NORMAL



Online mentoring and prospective students consultations

Welcome to Western

Uni experience days



Virtual workshops



WESTERN OUR NEW NORMAL



WHERE TO FROM HERE?



KEEP

Pre-recorded webinars;
Online engagement;
Webhubs.

RETURN

On-campus events;
Rebuild in-school presence.

WESTERN OUR NEW NORMAL



WHAT WE WILL EXPLORE



Expanded cohorts

Virtual school participants

Trackable online engagement

Further technological
innovations

Upcoming changes to HEPPP

WESTERN

OUR NEW NORMAL



LESSONS AND LEARNINGS

It was. Very helpful as it was short and accessible . There weren't a lot of pages and it was easy to understand . It gave good advice . - Student

At my school online workshops are **difficult to organise** as we have a **limited number of computer labs** which are used for the teaching of IPR,IST etc. **Classes need to be moved for anyone else to use the computer lab** -Teacher, Belmore Boys

We linked the recording and resources to the Google Classroom **that has every Year 12 student in it** – Teacher, Casula High

I like the way the presented it and **broke it done** – Student, Elizabeth Macarthur

'Don't let perfection be the enemy of good'

Technical and digital disparity is ever present.

WESTERN

OUR NEW NORMAL



LESSONS AND LEARNINGS

Information was excellent and opportunities for questions as well as checking out other questions from across the area – Teacher, Nepean CAPA

We had technical issues so students were on their own devices and it was difficult to know what was happening as we were walking around **making sure they were engaged**. – Teacher, Jamison High

helpful: - **the simplicity of it** – Student, Granville South CAPA

The **tips and tricks**. the **wide variety of resources and evidence** to support tips and recommendations when looking towards an individuals future. the included individuals and collective future, consideration for all individuals. – Student, Plumpton High

Be willing to attempt new things

Learn to fail forwards.

WESTERN
OUR NEW NORMAL



westernengagement@westernsydney.edu.au

STAY CONNECTED

WESTERN
OUR NEW NORMAL



Q&A