

WESTERN WORDS

Starting university can be scary. New places to go, people to meet and new terminology. Don't worry, we have you covered with some of the Western Words you are bound to hear when you begin!

ALLOCATE+

The system used by students to register their preferred learning activities, lectures, tutorials etc. Allocate+ sorts all preferences together and places students into their activities.

CENSUS

The date by which tuition fees and student contributions must be paid. Eligible students can choose to defer payment of their fees via a HELP loan, but applications for deferment of tuition fees or student contributions and the provision of their Tax File Number must be made on or before the census date.

EFORMS

An online system to allow students to submit administrative forms online. So far, the Rule Waiver, Pathways Credit, Review of Grade, Advanced Standing and Special Consideration & Deferred Exam forms are available.

LEARNING GUIDE

Details the fundamental mutual obligations and responsibilities of the University and students, in relation to a unit. It provides details on assessments, including due dates and assessment criteria, and what is expected for students to achieve particular grades in the unit.

LECTURE

A lecture is normally held in a large room or lecture theatre with many students and one lecturer. Students are expected to take relevant notes during the lecture.

MYSR

MySR is the University's online student records system, where students manage their enrolment – enrolling, adding, changing or dropping units (until the census date), keeping their personal and contact details up to date, checking their fees and their results.

MYWESTERN

This student portal is a point of entry to the applications, systems and notifications students need at Western. It's where students can check email, access student systems and stay up-to-date with important news and events.

SPECIAL CONSIDERATION

There may be times when students experience serious misadventure, accidents or extenuating circumstances beyond their control which affects their academic performance. Applying for and receiving special consideration means that those circumstances will be taken into account when their grade is calculated.

SSAF

The Student Services and Amenities Fee is spent on student services and amenities related to sporting and recreational activities, employment and career advice, health and welfare, study skills programs, orientation, child care, financial advice, overseas student services and food services.

TURNITIN

An online plagiarism detection and referencing checking system that compares students' work against other documents in the Turnitin database or that are available online. It identifies and provides reports on similarities between documents.

TUTORIAL

Tutorials are generally small classes of about 25 students, which last about one or two hours. Usually tutorials are used to discuss and debate the lecture material and have an emphasis on student-teacher interaction and class participation.

UNIT OUTLINE

Provides clear and concise information about the unit of study, including credit points, level, prerequisites and assessment requirements.

vUWS

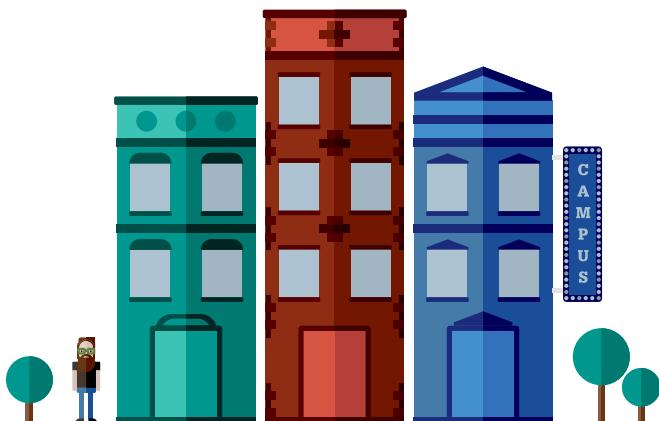
Our online learning environment. Each course and some units have a vUWS site, which may include unit or course outlines, information about assessments, study resources and unit/course announcements.

WESTERNACCOUNT

A WesternAccount gives students access to University online services and systems such as student email and My Student Records (MySR).

WESTERN YOU

An online student experience community that enables WSU students to provide feedback, share ideas through surveys, focus groups and other activities.



BEFORE YOU ENROL

It's important that you are properly prepared and informed before you enrol. There's a lot to consider, including making sure you understand all the requirements for your course.

Here are a few things to do, read and participate in that will get you off to the best possible start:

Special Requirements

Special requirements relate to enrolment in courses/units where clinical, practical or work placements occur. These include Working with Children Checks, Vaccination Cards and First Aid Certificates.

westernsydney.edu.au/specialrequirements

Inherent Requirements

Inherent requirements are the abilities, knowledge and skills you need to complete the course. Eligible students with a disability or chronic health condition can have adjustments made to enable them to meet these requirements. Cultural or religious considerations can also be taken into account. However, any adjustments must not fundamentally change the nature of the inherent requirement.

westernsydney.edu.au/ir

Disability Service

The Disability Service is a team of professional disability advisors and trained educational support staff. We can support and assist future and current students with disabilities and chronic health conditions to reach their full academic potential. Students with a temporary injury such as a broken limb may also be eligible for assistance. To speak to a Disability Advisor or make an appointment, call (02) 9852 5199.

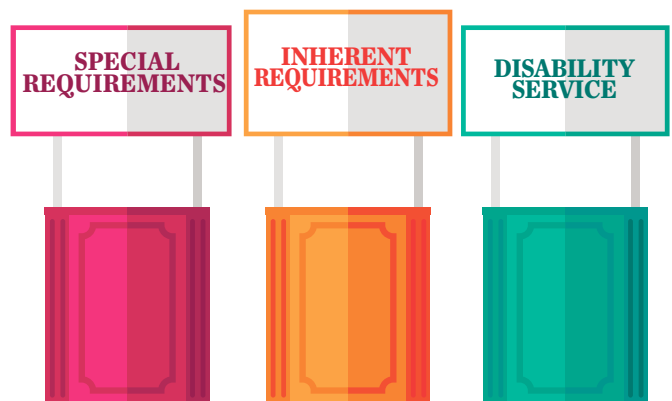
westernsydney.edu.au/disability

TIPS & HINTS

Use the handbook to find out which units you can/should enrol in and to plan your course.

handbook.westernsydney.edu.au

If you need more help, contact the course information team on 1300 897 669 or email study@westernsydney.edu.au



ENROLLING



There are a number of steps in the enrolment process and they're all important. With a little guidance, it should be a simple process and you can get started on the right foot.

The steps to enrol vary depending on what type of student you are – local, international, HDR, Online etc.

All the information you need is on the 'How do I enrol' webpage in the Starting at Western Sydney University website.

westernsydney.edu.au/enrol

Follow the steps in order and make sure you've completed each step correctly. If you need any help along the way, you can get in touch with Student Central either over the phone on 1300 668 370 or via email at **studentcentral@westernsydney.edu.au**.

TIPS & HINTS

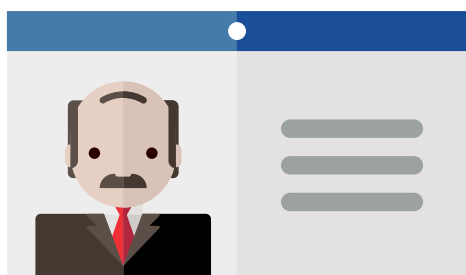
There is a help function in MySR. If you're unsure about something, you can click the help icon in the top right corner of the page.

Important notices and announcements are regularly displayed in MySR, so check it often!

HOW UNI WORKS – A CRASH COURSE

During your transition, there's a lot to get your head around.

The important thing is to not let yourself feel intimidated or overwhelmed, and remember that most new students feel the same way you do.



You should also remember to ask for help. Our staff are here to help give advice or point you to someone else who can help.

To get you started, here are a few frequently asked questions you may find helpful.

HOW DO I GET MY STUDENT ID CARD?

Once you have enrolled correctly in MySR, you can apply for your student ID card online. You will need to bring photo identification with you to collect your Student ID card at Student Central.

onlineID.westernsydney.edu.au

HOW DO I GET TO UNI?

There are lots of easy transport options for getting to all our campuses. You can choose from a number of public bus routes or you can catch the train and take advantage of the free shuttle bus we offer to take you from the station to campus. Detailed information about all transport options for each campus is available on our [getting to uni](#) webpage.

westernsydney.edu.au/gettingtouni



HOW UNI WORKS – A CRASH COURSE

(CONTINUED)

WHAT CAN STUDENT CENTRAL HELP ME WITH?

Student Central is your first point of contact for information, advice, forms and referrals to other services.

They can help with general advice and help for issues including:

- *enrolment and fees*
- *exams and results*
- *graduation*
- *applying for a travel concession pass*
- *applying for a Student ID card*
- *help lodging a form or eForm*
- *discounted travel for international students*
- *confirmation of enrolment for international students*

Forms can be collected and submitted at any Student Central or lodged after hours using the after-hours drop off boxes.

Call the Student Central Infoline on **1300 668 370** or email studentcentral@westernsydney.edu.au.

HOW MUCH DOES UNIVERSITY COST?

That depends on your degree, course requirements and enrolment status. All students pay tuition fees, which are determined by your degree and enrolment status. You may also be eligible for a HELP loan to defer your tuition fees. There are other costs which may include your Student Services and Amenities Fee (SSAF), textbooks and other course equipment.

westernsydney.edu.au/fees

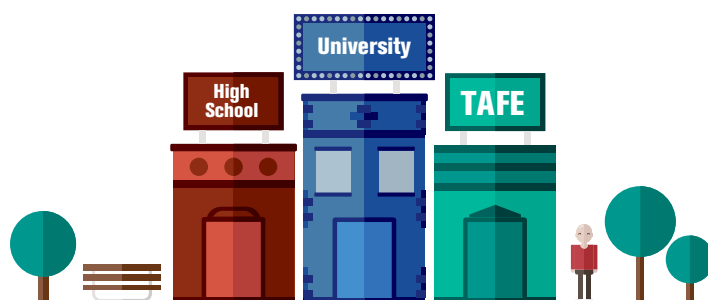


WHAT ARE MY RESPONSIBILITIES WHEN I AM AT UNI?

When you first enrol, you sign the Student Declaration as a condition of your enrolment. This outlines the rules you will adhere to while at the university and your responsibilities as a Western Sydney University student.

As a Western student, you are expected to understand and meet your responsibilities as outlined in the declaration, code of conduct and other policies. Some of your key responsibilities are to:

- *Follow the rules*
- *Check and use your student email account*
- *Check the student web pages and Western Central Student Portal*
- *Satisfy your study and course requirements*
- *Provide true and correct information for the University's use*
- *Keep your personal and contact details up to date*



WHAT'S THE DIFFERENCE BETWEEN HIGH SCHOOL/TAFE AND UNIVERSITY?

The biggest difference between high school and university is that the responsibility for your education now rests on you - not your teachers. In the eyes of your lecturers and tutors, you are on equal footing with the mature age student or the international student sitting beside you. Like them, you are at uni to seek a higher education and the great thing about uni is that you do it your way. Just don't expect anyone to do it for you!

HOW UNI WORKS – A CRASH COURSE

(CONTINUED)

WHAT OTHER SUPPORT SERVICES ARE AVAILABLE?

We have a range of services that can help you stay on top of things and focus on your studies.

Course and Unit Help

Unit-specific help is available from your tutor, lecturer or Unit Coordinator. Course-specific help is available from your Academic Course Advisor or Director of Academic Program. You can find their contact details in the Handbook or in your unit outline.

Welfare and Financial Services

We offer a range of financial assistance to help with education-related costs and living expenses. This includes interest free loans and grants.

westernsydney.edu.au/welfare

Help with Centrelink

Are you considering applying for a Centrelink payment while you study? Not sure where to start? The Student Welfare Service can assist students with:

- *Information about Centrelink payments*
- *Exploring your eligibility for Centrelink payments*
- *Contacting Centrelink on your behalf (e.g. when your Centrelink payment is suspended and you don't understand the reason)*
- *Providing support if you are appealing a Centrelink decision, or referring you to a relevant service provider for assistance*
-

Accommodation

Live on campus and walk to class. There is no better place to enjoy University life to the fullest than the Village!

www.mystudentvillage.com

Counselling Service

Access on-campus and online support if you're experiencing any personal, emotional, social or relationship difficulties, or you're finding it hard to adjust to university life.

1300 668 370

westernsydney.edu.au/counselling

Disability Service

Available to assist students with a disability, chronic health condition or temporary injury.

1300 668 370

westernsydney.edu.au/disability

Mental Health and Wellbeing

Western promotes a number of initiatives to support your mental health and wellbeing. Access resources online. Join the student Facebook group for information on health promotion initiatives on campus, including free training.

facebook.com/groups/WesternSydneyUMHWb

Indigenous Students

The Badanami Centre for Indigenous Education provides support to all Indigenous students. We have programs, services, facilities and Indigenous Students Support Officers who can help.

westernsydney.edu.au/badanami

International Students

There's a range of support available to International students at Western. From finding somewhere to live, finding out about your visa conditions or how you can find work in Australia, we can help.

westernsydney.edu.au/international



TIPS & HINTS

Check out your student diary for more services and facilities available. Pick yours up at Orientation, Student Central or from an Information Stall in week 1.

HOW UNI WORKS – A CRASH COURSE (CONTINUED)

HOW CAN I GET INVOLVED IN UNI LIFE?

Uni is about more than studying and it's important to make time to socialise and get involved with the uni and campus life.

Clubs and Societies

There's a club for everyone, with focuses ranging from sports to social, political to religious. And if you have a passion and want to share it with others, you can start your own club!

westernsydney.edu.au/campuslife

Become a student representative

Becoming a student representative is a fantastic way to engage with the University and develop leadership skills you can take with you into the workplace.

westernsydney.edu.au/studentrep

Join a program

Programs like MATES or PASS are the perfect way to meet people and start getting involved in uni life.

westernsydney.edu.au/mates

westernsydney.edu.au/pass

Student newspaper

The W'SUP newspaper is an independent, student-run paper available online and in print. Copies of the W'SUP newspaper can be found on stands all around campus and are free, so grab a copy or read it online at the W'SUP website.

westernsydney.edu.au/studentnewspaper

Out & About

Get involved, meet new people and make your time at Western a memorable one. Whether you prefer sightseeing, bushwalking, adrenaline experiences or exploring the great Australian outdoors - we've got you covered.

westernsydney.edu.au/outandabout



TIPS & HINTS

Discover tips on how to make the most of your time at Western with our podcast series 'Things Every WSU Student Should Know'.

westernsydney.edu.au/podcasts

HELPING YOU GET AHEAD

We have a great range of opportunities, programs and workshops to help you flourish. Here are just some of the options you can take to get ahead. The best part is everything is free.



Before and during session programs

There are a number of programs and workshops for academic literacy and maths skills. These programs are designed specifically to help you excel in your studies.

westernsydney.edu.au/academicliteracy

westernsydney.edu.au/mesh_events

MATES

A mentoring program for new students, providing an opportunity to connect with other new students and mentors in later years of study.

westernsydney.edu.au/mates

PASS (Peer Assisted Study Sessions)

Join PASS study groups, run by student facilitators, to boost your academic performance. Available on campus and online.

westernsydney.edu.au/pass

Online resources

You can get help with your studies, improve your academic skills and enhance your 'life skills' (like time management etc) with the Study, Money & Life Skills vUWS site, which can help you increase your learning potential, develop personal awareness and assist with skills to manage your finances.

westernsydney.edu.au/skillsforsuccess

Skills development

You will face challenges at university. Identifying your own skills and potential will help you meet these challenges and learn more about yourself in the process. Our workshops will help you find your strengths and how you can use them to succeed at university.

westernsydney.edu.au/workshops

You can also develop your business, creative, software and other skills online.

[Lynda.com](https://www.lynda.com)

TIPS & HINTS

Take a 20-minute Library tour during week 0 and 1 of session to find out about Library services and facilities.

STARTING OUT CHECKLIST

Let's make sure you have crossed off all of the important steps in the Starting Out process.



ENROL CORRECTLY

MAKE SURE YOU HAVE:

- Accepted your offer
- Activated your WesternAccount
westernaccount.westernsydney.edu.au
- Enrolled online
westernsydney.edu.au/enrol
- Registered for tutorials
westernsydney.edu.au/tutorialregistration
- Checked your timetable
<https://tutorialregistration.uws.edu.au/aplus/timetable/#subjects>

STARTING OUT ACTIVITIES

- Explore the Starting at Western Sydney University website
westernsydney.edu.au/starting
- Attend Orientation
westernsydney.edu.au/orientation
- Brush up on your skills and register for a workshop
westernsydney.edu.au/workshops
- Take the 'Are you ready for uni?' quiz
westernsydney.edu.au/areyouready
- Join MATES
westernsydney.edu.au/mates

BE PREPARED

- Organise your Student ID card
westernsydney.edu.au/studentidcard
- Plan how will you get to campus
westernsydney.edu.au/gettingtouni
- Check the latest news and important messages in MyWestern
westernsydney.edu.au/mywestern
- Find out about your fees
westernsydney.edu.au/fees
- Take a Library tour (offered in weeks 0 and 1)
library.westernsydney.edu.au
- Register on CareerHub for employment opportunities and careers resources
westernsydney.edu.au/careerhub
- Join the online WesternLife community to find events, clubs, sports and opportunities
westernsydney.edu.au/campuslife/campus_life/westernlife
- Check your student email regularly. You will receive vital information about your enrolment, exams, results and graduation.
westernsydney.edu.au/studentemail
- Save the Campus Safety and Security number in your phone **1300 737 003**

TIPS & HINTS

If you need more help or have any questions, come and see our 'Ask Us Assistants' at an information stall in weeks 1 and 2 of session. Ask them anything about uni!