



WIRELESS SHARING: Using Solstice in the Learning Studio

Solstice enables wireless presentation of content, from one or more devices simultaneously to both the front, and all screens in the room. It enables presentation from the centre of the room, comparison of group work results created at different tables/pods, and student BYOD (Bring Your Own Device) contributions direct to the class.

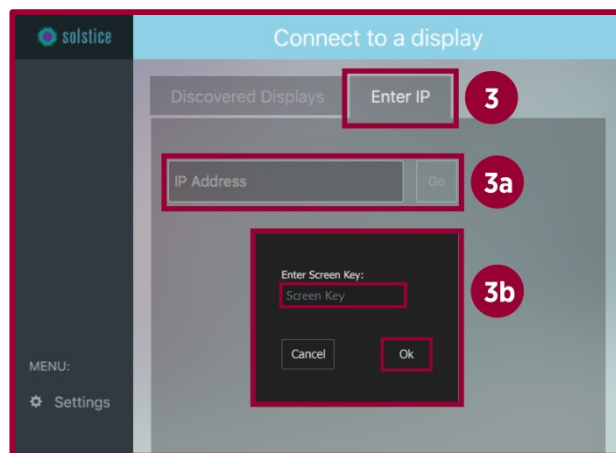
Step 1: Install Solstice

1. On your device, go to www.mersive.com/get-solstice
2. Select the correct version of Solstice
 - a. **Mobile devices** will be directed to the device app store and prompted to install the application
 - b. **Laptops** will download the software. Double click file to install.

The Solstice Client software is updated several times a year. The URL provides the most recent version.

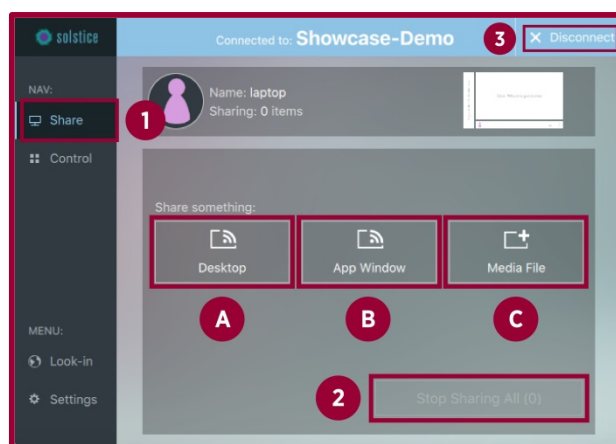
Step 2: Connect to a Solstice Display

1. **Open** the Solstice application
2. **Create** a name (visible to all Solstice users)
3. **Click Enter IP** tab
 - a. The **IP Address** is displayed on the Solstice screen or provided by instructor. It will be different in each Learning Studio.
 - b. The **Screen Key**, which changes for each session, will be displayed on the Solstice screen. Enter it to connect.



Step 3: Share Content

1. From the **Share** tab, Select content to share
 - A. **Desktop** to share laptop screen (& audio)
 - B. **App window** to share only an app
 - C. **Media file** to share a media file
- To stop sharing content:
2. Stop Sharing All, or
3. Disconnect from the Solstice Display



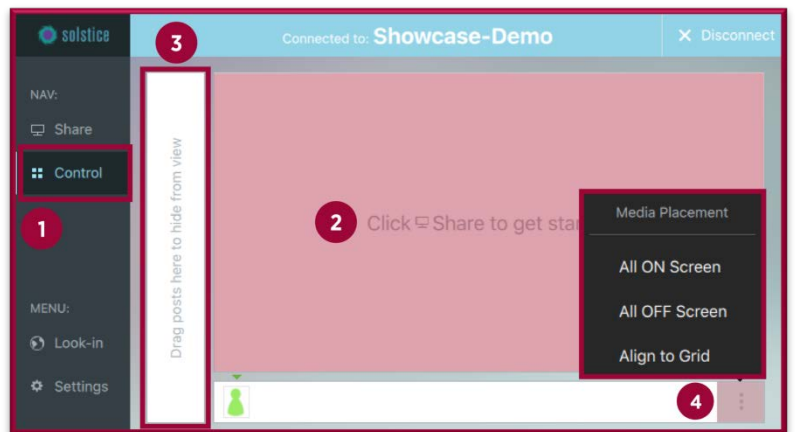


Step 4: Invite participants to view your shared content

Participants can click the 'View Shared Content' button to see your content from their computer on wheels (COWs).

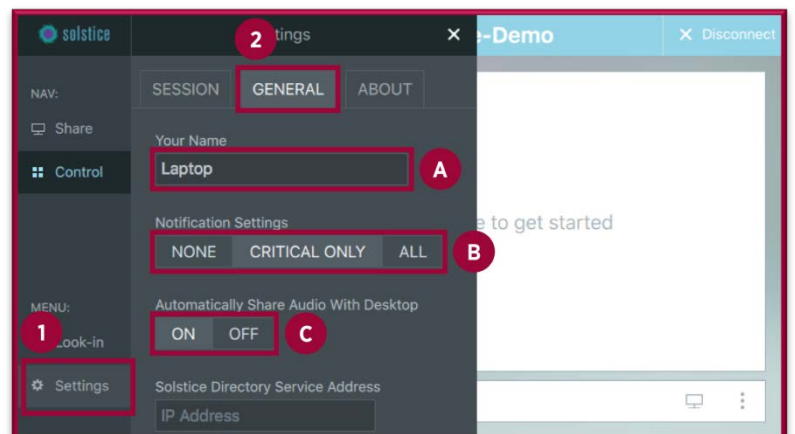
Control

1. To manipulate shared content, select **Control**
2. Click and hold any shared media to move or rearrange it
3. Shared media can be dragged to this bar to hide it from view, or be dragged to the right in to the main screen at any time to make it visible.
4. Use the options button to put all shared content **ON/OFF Screen** and **Align content to Grid**



Settings

1. Select the **Settings** tab
2. Select the **GENERAL** tab to see all user accessible settings:
 - a. **Display name:** change your device Solstice name
 - b. **Notifications:** adjust the frequency of notifications
 - c. **Share audio*:** if you want to share audio or a video, this setting must be set to **ON**



*Feature enabled by default.

For further assistance, please contact the IT Service Desk

Website: myit.westernsydney.edu.au

Live Chat: myit.westernsydney.edu.au

Email: itservicedesk@westernsydney.edu.au

Phone: (02) 9852 5111 (ext 5111)