

H.A.C. Student
Independent
Newspaper

AI-31231

KIMBUNA

1000 COPIES

VOL. 5 NO. 1

21.2.89

Orientation Week '89



Our Most Distinguished Royal Couple

The "O" Week Welcome

Orientation Week arrived with a bang in '89 (the year of the University) with hundreds of Tees arriving, many of whom will celebrate the centenary in 1991 as Tors.

With enrolments over by Wednesday, the Tors and Observers set about instilling 98 years of spirit and tradition in the hearts and minds of their Tees.

Many will probably relate to the disorientation involved on the first day at college. Hayrides and college tours were a great help to those lost and bewildered first years.

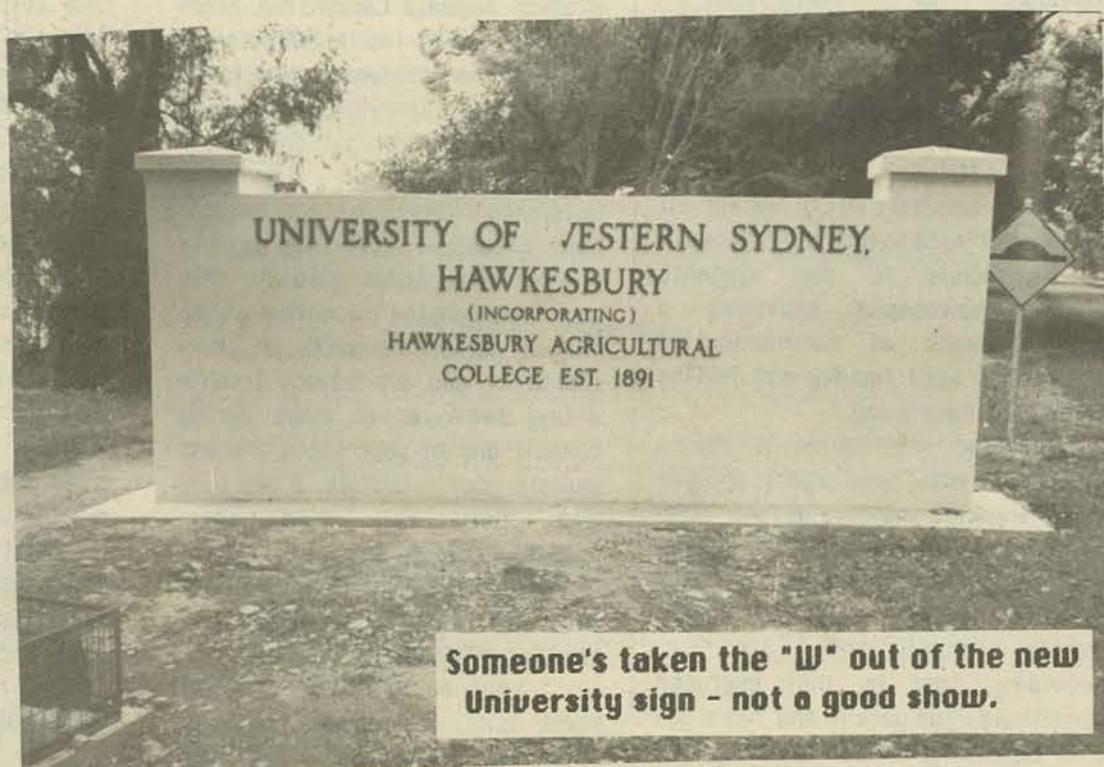
Then the fun began.....

Wednesday 3.30 pm arrived - along with the wonderful process of Tee Group formations and the concoction of wild and witty names. From cows to cavities, and vegetables to underpants, a few hometruths evolved.

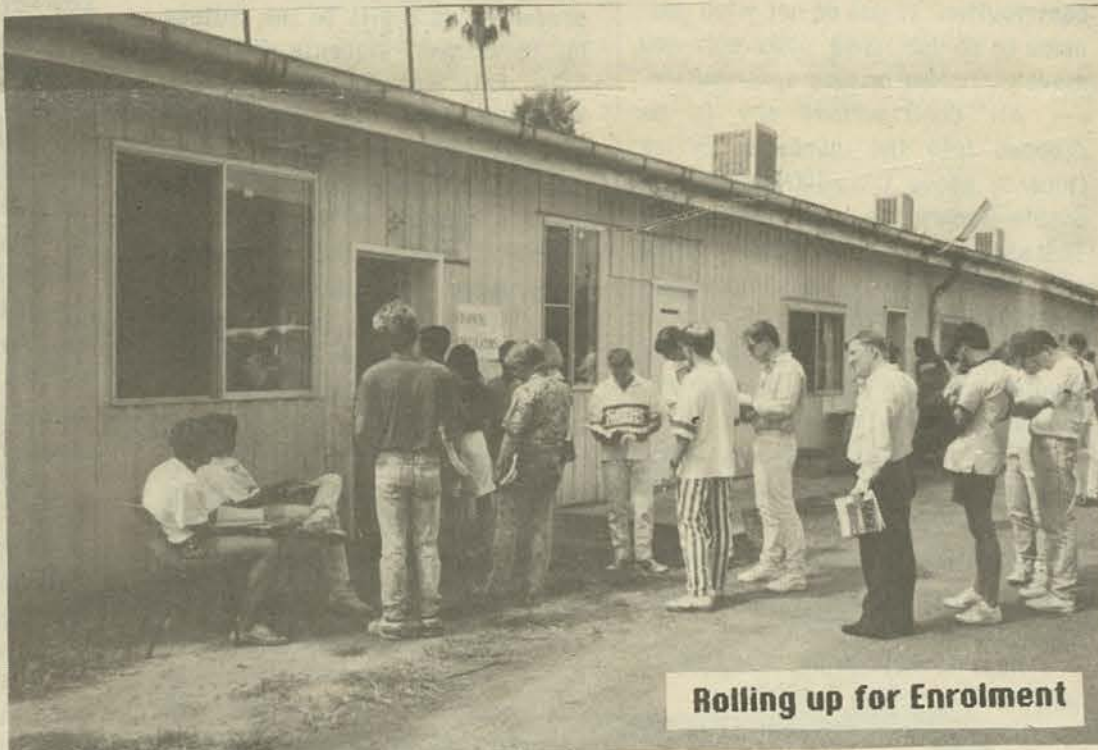
After the christenings, each Tee was hurled into a multitude of activities. Still, there was time to relax with the Bush Dance on Wednesday night and Tee Concert on Thursday night.

The river farm on Thursday was hot and steamy, with sunburn being a good excuse to hide embarrassment. Fun was had all round and it was guaranteed there would be some sound sleepers on Thursday night!

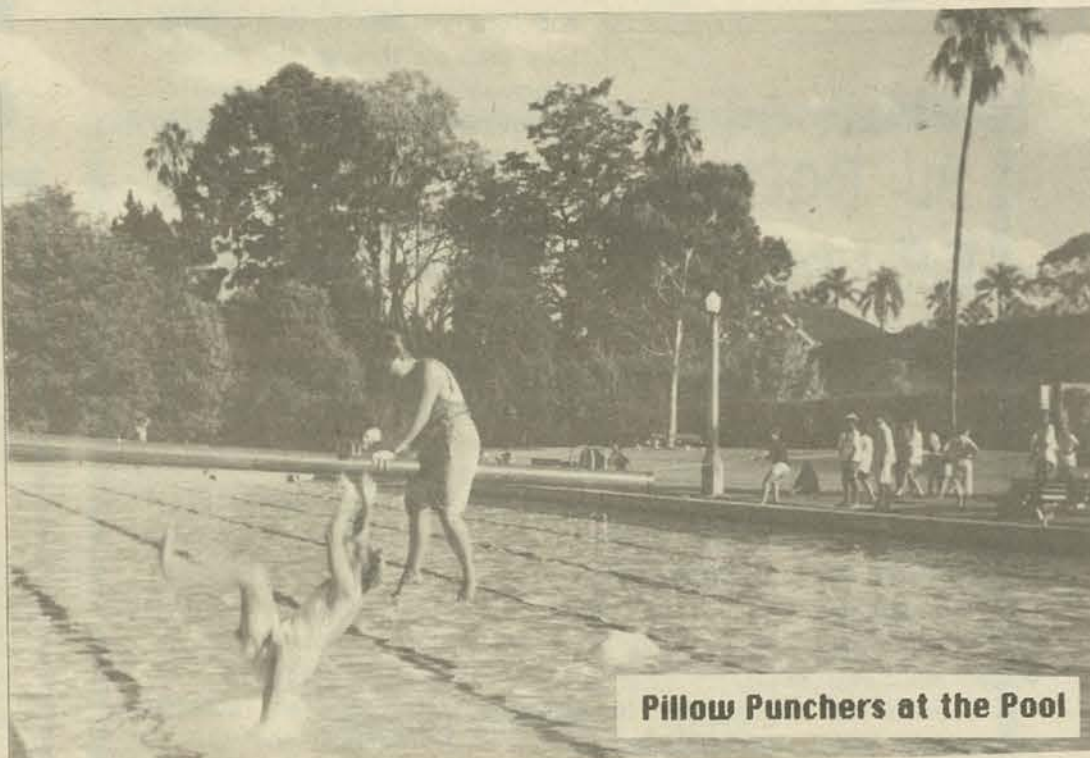
Hoe-downs and hooprays, sunscreen and sandals - all made 1989 "O" Week unforgettable.



Someone's taken the "W" out of the new University sign - not a good show.



Rolling up for Enrolment



Pillow Punchers at the Pool

Editorial

The new editorial team of Jumbunna would like to welcome both returning and all new students to Hawkesbury. We wish everyone the best for 1989.

This is the year for all students to excel in original contributions to Jumbunna with writing, drawings, cartoons or photographs..... wherever your talents lie!

The editorial team for 1989 is Stuart Dayman (Drooper), Dan Cloonan (Soc), Kim Goldsmith (Nugget), Michael Hartman (Ticke) and Jenny Lockhart (S.C.) We are all looking forward to hearing from you!

Jumbunna is the students weekly newspaper, providing a valued means of communication throughout each faculty and letting everyone have a say.

The editorial team is hoping Jumbunna will once again provide the weekly news update and approaching events, letters to the editor, people profiles, student profiles, public notices, sports events, photographs, etc. providing, that is, that everyone contributes and gets in and 'has a go'!

Basically, almost anything will be published - provided the editorial team receives your name with each contribution. If you do not wish your name to be published, make sure you make this clear on your contribution.

All contributions are to be dropped into the Jumbunna Office (located above the coffee lounge in Stable Square) no later than 1 pm, Thursday of each week. Office hours are 9.30 am to 3 pm, Wednesday, Thursday and Friday.

Good luck with 1989 and your studies - have a happy, healthy, not too hectic and successful year.

The editorial team and other students look forward to hearing from you, so get active, get the minds rolling and pens, crayons or cameras clicking, and show us what you're made of!

Hope to hear from everyone by next week (or close to it).

Jenny Lockhart (on behalf of the editorial committee).

I FINALLY GOT
IT ALL TOGETHER
... BUT I FORGOT
WHERE I PUT IT.

This paper was produced by Roslyn Anderson, Lynn Davis, Stuart Dayman, Donna Gardiner, Kim Goldsmith, and Jenny Lockhart, and printed at Rural Press, North Richmond.

The Jumbunna Office is located above the Coffee Lounge in Stable Square and is open on Wednesdays, Thursdays and Fridays between 9.30am and 3 pm.

Deadline for submissions to Jumbunna is 12 noon on Thursday. Photographs should be submitted by 9 am on Thursday and will be returned to you on Friday.

Telephone 78-4647 or internal extension 317.

LETTERS

Dear Editors,

I would like to share with your readers some of my ideas and experiences that I have had entering 1989 at Hawkesbury.

My first point that I would like to raise is that I was able to hear several submissions to the Student Appeals Committee. From listening to the four submissions I realised that students seem to be only paying lip service to the piece of paper they sign asking then if they are aware of the rules governing assessment and appeals over grades. These rules are in place to help those students that have had genuine misadventure or illness during semester or exam period. If you are having trouble during semester or exam period consult one of your lecturers and explain your situation. I am sure that you will find them understanding as they would prefer to see every one of their students pass than deliberately make life hard for students so they fail.

Well, it didn't take long for some idiot to damage the sign down the front drive. For those that are ill-informed, the wall and the associated lettering was presented as a gift to the college by third year students in 1988. This wall was not put there by Administration to ire those students that have been left behind and are still back in the dark ages and are ignorant of the trends and essential changes that have to be made in tertiary education.

Whilst on the subject of the Uni of the West, we as a college have a lot to gain from the benefits that are offered by a university, academically speaking, but increasing pressure will be placed upon our traditions and social activities here at H.A.C. At

the first meeting of the board of governors provision has been made for student welfare to be reviewed. If you believe the changes that are happening or will happen in the future affect the welfare of the current students and future students, then channel your problem through the Student Representative Council. Positive changes occur around Hawkesbury through the S.R.C. and it is only as strong as the student support network around it.

During the last meeting of the College Council, held on Friday 10th February 1989:-

(1) provisions were made in the annual budget for "a 52 bed

expansion of residential facilities on campus";

(2) discussions involving a professional campaign to "lure" overseas students to the college as a whole;

(3) a table was presented showing that of all the courses offered by this college the Business course was in most demand with Horticulture running a close second. All other courses offered by the faculties of Food Science and Nursing look likely to be filled while Ag. looks like it just might fill its positions.

What is happening to the acceptance of our Ag course? The problems are varied and complex as explained by Bob Macadam during the meeting. For a bit of trivia I overheard someone the other day count that N.S.W. now has six institutions offering a degree in Agriculture, with the latest being Orange Ag College offering a Agri-business course. From what I have heard this new course has adopted many of our paradigms and philosophies. Is this a sign that

other institutions are now realising the benefits of our course?

(4) Mr Alex Dix a member of our College Council was elected Deputy Chancellor unopposed on the Board of Governors of the University of the West. I am sure that Alex will give Hawkesbury a fair and just hearing at all times whilst upholding his position in the Uni of the West. Alex and Dr Swain are now our two channels for affairs affecting the students on this college to be heard by the board of governors.

We hope that Hawkesbury Ag College is moving in the right direction and it is the job of the students to see that the integrity and history is maintained in a positive and appreciable manner.

Have fun during O-week.

Scott Chambers Ag IV

Nigel Hart Ag IV.



Andre's HAIR DESIGN

STUDENT DISCOUNTS ON TUESDAYS

	Normally	Tuesday
Stylecut	\$23.00	\$16.50
Perm (short)	\$57.00	\$47.00
Highlights (inc. cut)	\$48.00	\$38.00
Highlights (foil)	per section	\$ 2.00

Models needed for supervised training.

PARK MALL, WINDSOR STREET, 78-3518

PUBLIC NOTICES

HALLS SECURITY

STUDENTS PLEASE NOTE:
KEEP YOUR ROOM DOORS LOCKED
WHEN YOU ARE AWAY AND DON'T
LEAVE MONEY IN YOUR TOP
DRAWER - IT IS THE FIRST
PLACE A THIEF WILL LOOK.

College Christian Fellowship

Hello, welcome to Hawkesbury
- and welcome to College Christian Fellowship!

Our Christian Fellowship is a group of students (from all courses) and staff who believe that Jesus Christ is Lord of all and very relevant in all areas of our life.

We meet at the bar (Stable Square) during lunchtime (12.30 pm) on Thursdays for bible study and discussion.

We also have barbeques, games nights, weekends away, go bush-walking and have fun together. So why not come and join us. Here are a few dates to remember....

February - Wednesday, 22nd

BBQ at 29 Southee Road, Hobartville. Please bring your own meat and some drink. Meet at Fairy Circle at 6.00 pm or make your own way there.

- Thursday, 23rd

First lunchtime meeting (12.30 pm at the bar).

March - Friday, 10th

Open Forum - "Evolution: A Theory in Crisis?" (12.30 pm at the bar).

- 17th, 18th and 19th

(more details later!) Weekend away at Camp Berachah, Silverdale. Speaker: Mark Strom - "Finding a healthy sense of personal worth".

Keyboard and Guitar Group Classes

Take 'time out' for a relaxing, fun hour each week.

Learn music in a group - keyboard and guitar - classes now being formed.

Hawkesbury Valley Music School, phone 77-5941.

HAWKESBURY AGRICULTURAL COLLEGE UNION

The College Union which has functioned since 1972, is an autonomous body whose constitution is approved by the College Council. The Union has, as a prime responsibility, the management of the College's recreational facilities in a manner which encourages a Collegiate social atmosphere, together with ensuring that the members of the College community accept responsibility for maintaining these facilities at a high standard.

The Union is governed by a Council, which consists of students and staff elected by the Union members. Some staff are also appointed by the Principal. The Union Director, Michael Scanlan, is the executive officer of the Union Council and supervises all other Union staff.

The management office of the Union is located in Stable Square and all enquiries should be directed there, or by telephoning (045) 78-2601 or 70-1313.

Facilities and Services

Sports -

Swimming Pool - The pool is found near the Union Canteen and is open every day during summer. The pool is surrounded by plenty of seating and grassy areas and a coin operated BBQ is available for use.

Ovals - The sporting ovals are used for soccer, rugby, hockey and cricket.

Basketball Stadium - This venue is found opposite the Dean of Students' office and is used extensively during semester time.

Tennis Courts - The tennis courts are found at the back of Stable Square. They are available for use every day and lights are available for evening use.

Fitness Gymnasium - The gym is located in the Percheron Room, Stable Square and contains a Universal multi-station machine. It is available for free use by all students and HAC Union members from 7.30 am to 9 pm. Also in this room, Tae Kwon Do and Jazz Fitness classes are offered. Watch Jumbunna for details of dates and times.

Billiard Room - The S.A.C. Trophy Room is located off the Percheron Room and as well as housing College trophies, also contains a billiard table.

Other Facilities

Union Shop - located in Stable Square, the shop is managed by Donna Gardiner and is open as follows: Monday and Tuesday from 11.30 am - 1.30 pm; and Wednesday, Thursday and Friday from 11 am to 3 pm.

The shop stocks a good range of crested clothing and memorabilia, such as sloppy joes, T-shirts, ties, stick-pins, tie bars and glassware. Blazer material is also available and Donna can arrange for the blazers to be made up.

Nurse's uniforms, laboratory coats, industrial wear, footy socks and shorts are also available. Purchases can be made by bankcard and interested students can avail themselves of a lay-by service.

Copies of the college history, published by the Old Boys Union, can also be purchased. Call in and browse around.

Bar - The Union Bar is found in Stable Square and is perhaps the most popular meeting place on campus! There is a lot of memorabilia in the bar, the majority of which relates to the proud traditions of the Rugby Club.

Union Hall - This building was completed in the second half of 1988 and has proved very successful for staging the larger functions and balls held throughout the year. It is located beside the tennis courts at the back of Stable Square.

Coffee Lounge - Located in Stable Square, the coffee lounge is operated by Gail Kroehnert and Carol Shaw, and is a popular meeting place for a chat, chess or even for budding musicians to tickle the ivories. The Coffee Lounge is open from 9 am to 3 pm, Monday to Friday and serves cappuccino, tea, orange juice, hot chocolate, salads, sandwiches, rolls, quiche, toasted sandwiches, pies, lasagne and fresh baked cakes.

Catering is available for small functions (staff parties, farewells, birthdays, etc.) - see the friendly staff Gail and Carol for more information.

Union Canteen - The Union Canteen operates from Memorial Hall (near the swimming pool) under the watchful eye of Bridget Pombart.

The Canteen is open from 8.30 am to 4.15 pm Monday to Friday. It is also open on weekends - Saturday and Sunday: 9 am - 1 pm; and 5.30 pm - 7.30 pm.

Sandwiches, pies, sausage rolls, toasted sandwiches, milk shakes, cold drinks, tea, coffee, lollies and toiletry items are all available from the Union Canteen.

Administration

The Union offices are located on the southern side of Stable Square and are open for enquiries between 9 am to 3 pm daily or telephone ext. 313.

The Student Activities Officer, Tina Tallack, works from the SRC/SAC Office in the Coffee Lounge Loft, Stable Square. Call into the office and see Tina or telephone ext. 317 for information on student activities.



Evacuation of Halls During a Fire

In Australia every year over 9,000 fires cause damage to residential buildings and associated with this damage is the threat to the occupants' lives. Every week there are narrow escapes from death or serious injury.

The following are the fundamentals of escape from fire:

* Fire may occur in any part of a building through a variety of causes; it is your responsibility to be familiar with the evacuation procedure should fire break out. Every occupant must know how to escape from individual rooms if via the normal route is blocked by fire.

* In buildings of two stories or higher, occupants should be familiar with the location of all

stairs, and in the event of fire blocking an escape route, you must be familiar with alternative exits. Each occupant should know the location of the nearest accessible "break glass" alarm point to their room.

* In an emergency situation it is likely that power failure will occur. It is important that stairways, hallways and exits are left clear. Keep calm to minimise the risk of panic due to darkness.

* Remember to close, **DO NOT LOCK** all doors and windows - oxygen starvation can slow the spread of fire.

* Every occupant should know how to call the Fire Brigade and other Emergency Services as required. From public phones, ring 000 and from phones connected to the College PABX, dial 0 then 000. You will have to ask for the service required and give details of the nature and location of the emergency. **NEVER** presume that someone else has already rung "000".

* Fire fighting pending the arrival of the Fire Brigade should not be attempted unless this can be done without risk. Remember that toxic fumes and power can cause fatalities. If use of a fire extinguisher is to be attempted, take time to read the label to ensure you have the correct type.

* One vital point to be emphasised to all residents is that if heat can be felt through a closed door, it is dangerous to open it and an alternative exit should be found. In a situation where there is a lot of heavy smoke you should crawl along the floor whenever possible. Smoke kills more people than fire itself.

* In evacuation of a building, the emphasis must be on safety without panic. You should not attempt to save personal possessions, as fires can reach dangerous proportions within minutes. If you find someone unconscious, drag them out on a blanket, as it is easier to move them and safer.

* What can you do to assist with evacuation procedures?

- close doors and windows;
- bang on neighbours' doors;

- set off alarm;
- without endangering yourself - check to see there is no-one in showers or toilets;

- **ASSEMBLE AT YOUR MUSTER POINT.**

* A nominated person from each residential block, usually the Fire Warden or Senior Resident, should attempt to account for all occupants. The College/local Fire Brigade should be advised immediately they arrive, as to whether all occupants are accounted for or if residents may not have escaped. It is the Senior Resident's responsibility to report to the College or local Fire Brigade.

* If you can assist in any way, e.g. first aid, report to the Emergency Services personnel, **ONLY** after you have been accounted for by the Fire Warden. If you do not report to your muster point, you may be thought to be missing and cause an unnecessary and dangerous search to be instigated.

WHAT CAN YOU DO TO PREVENT FIRE?

* Do not leave electrical appliances turned on whilst your room is unoccupied. Don't leave electrical appliances in kitchens turned on and don't dry tea towels over an element. Also be careful not to put stoves against a wall as the heat from the element may cause a fire (especially in A-Block).

* Do not use waste paper bins as ashtrays.

EXCEPT IN EMERGENCY SITUATIONS, DO NOT INTERFERE WITH FIRE FIGHTING EQUIPMENT. You can and will be fined if caught using equipment illegally.

H.A.C. Volunteer Fire Brigade.
(H.A.C.V.F.B.)

Alarms

There will be a demonstration of the fire alarms this Wednesday, 22nd February at 7.00 pm.

Fire Training

The next fire training will be held this Wednesday, 22nd February at 4.00 pm at the Fire Shed. Any people interested in joining should just show up.

Eat Like Crazy Café

AND SANDWICH BAR

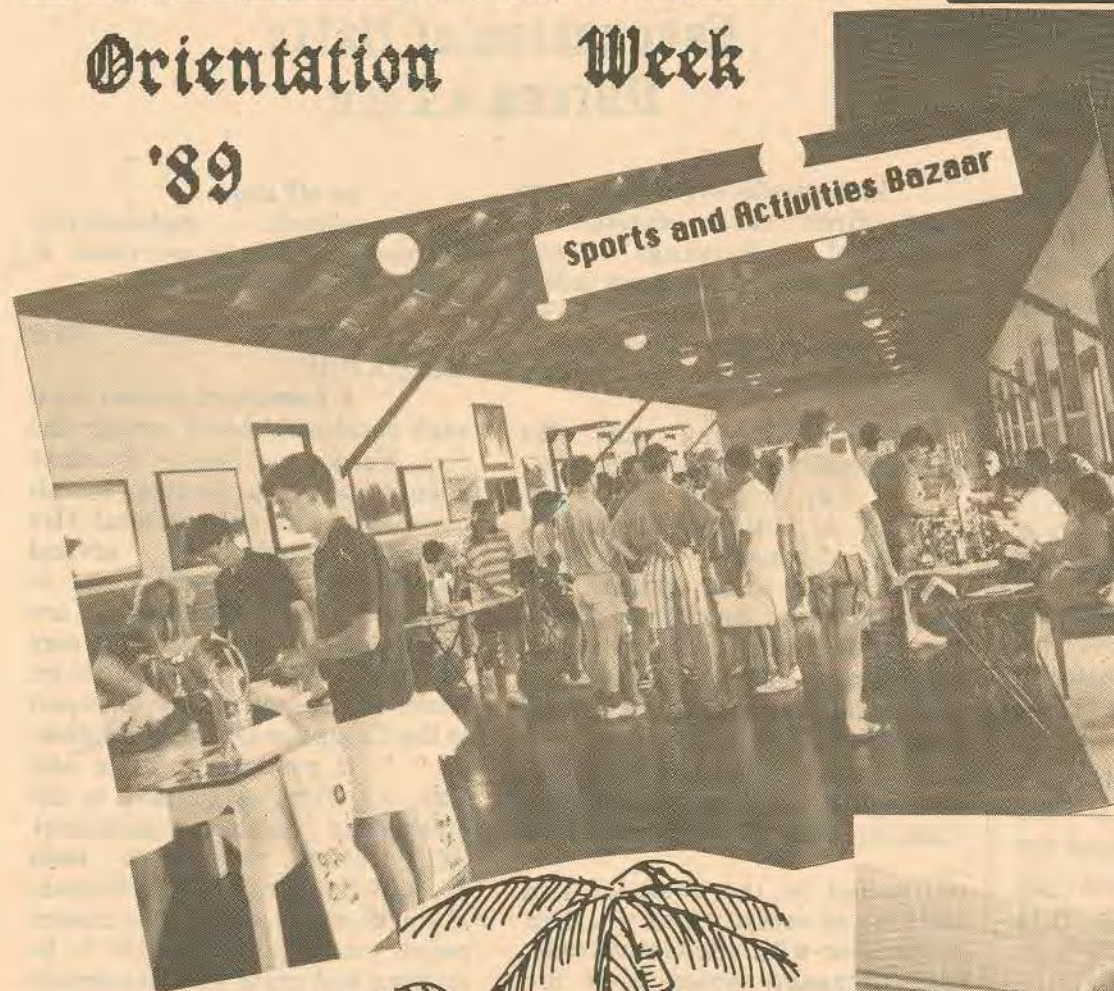
— OPEN MID-MORNING TILL LATE —
334B WINDSOR STREET, RICHMOND

OPEN 7 DAYS

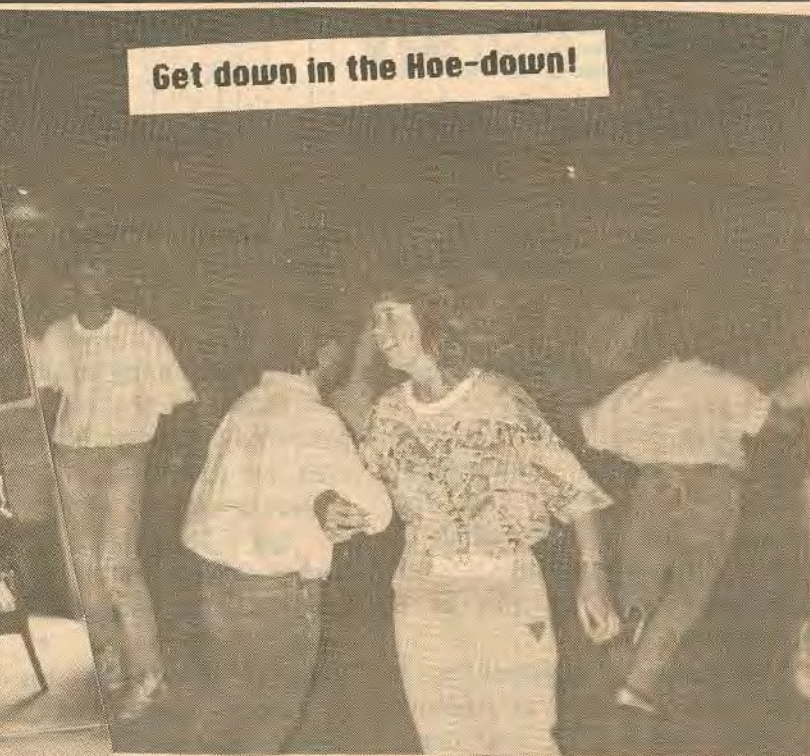
(045) 78 3660

Orientation Week '89

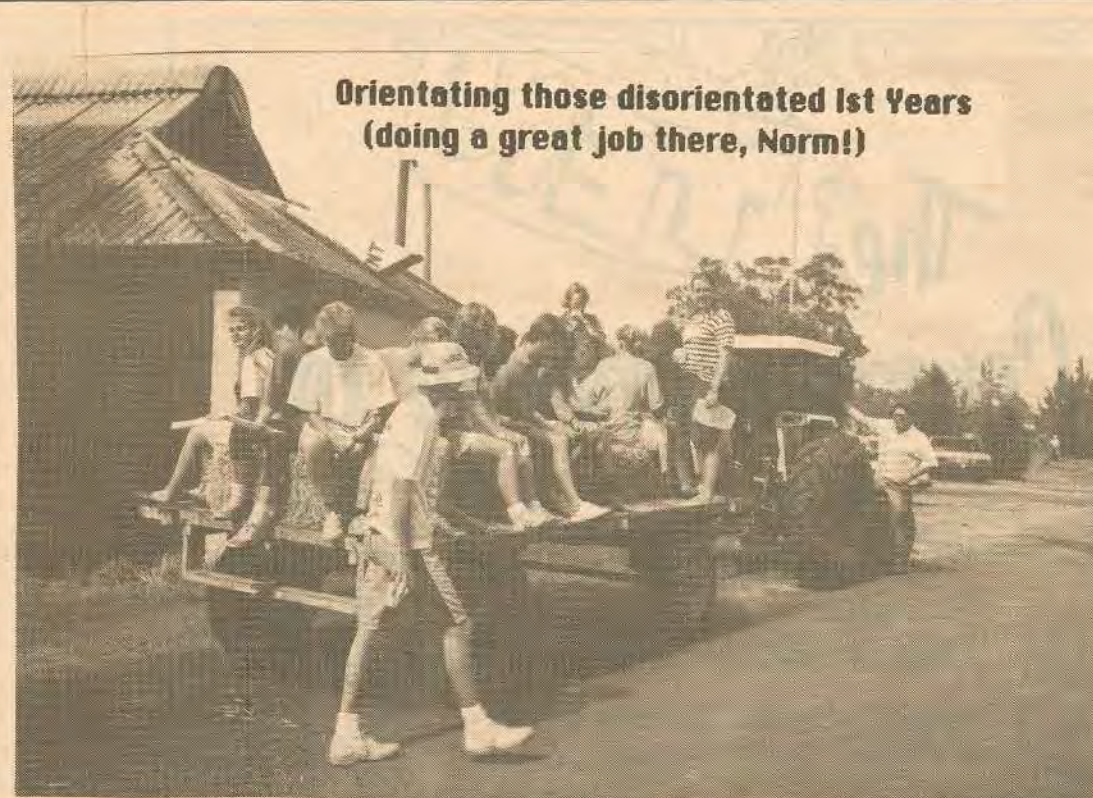
Sports and Activities Bazaar



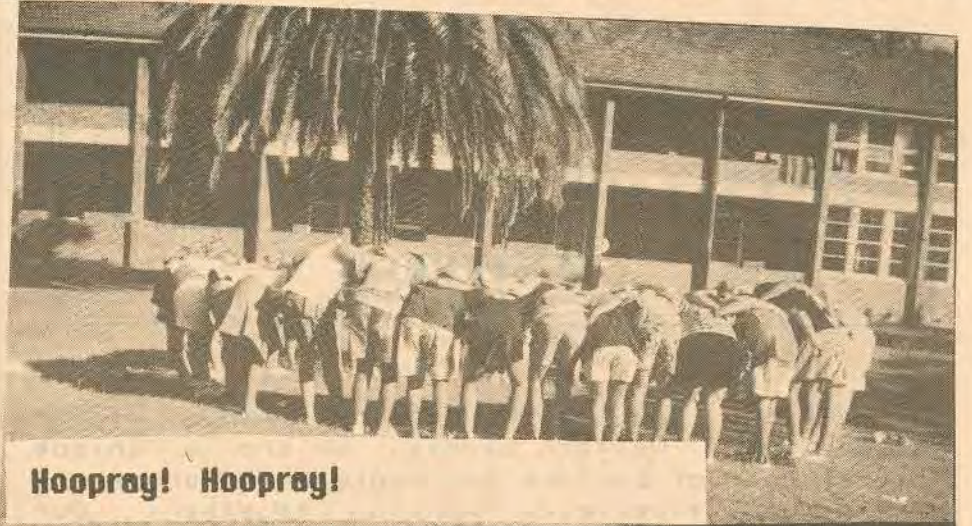
Get down in the Hoe-down!



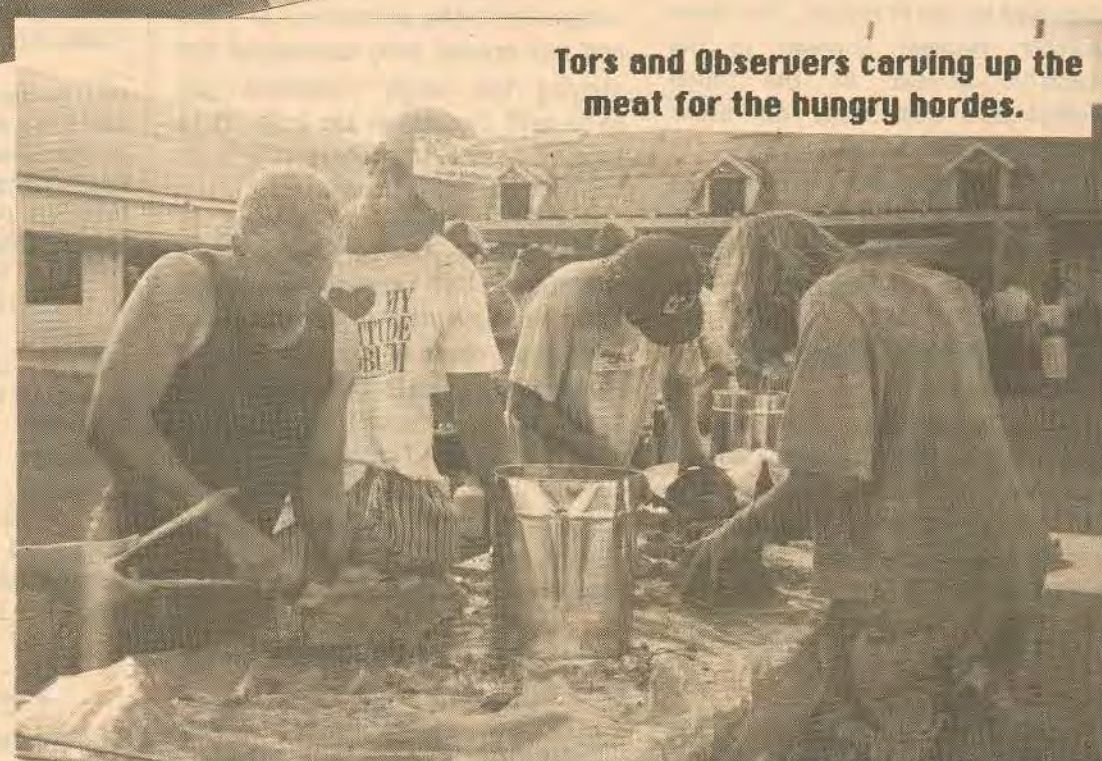
Orientating those disorientated 1st Years (doing a great job there, Norm!)



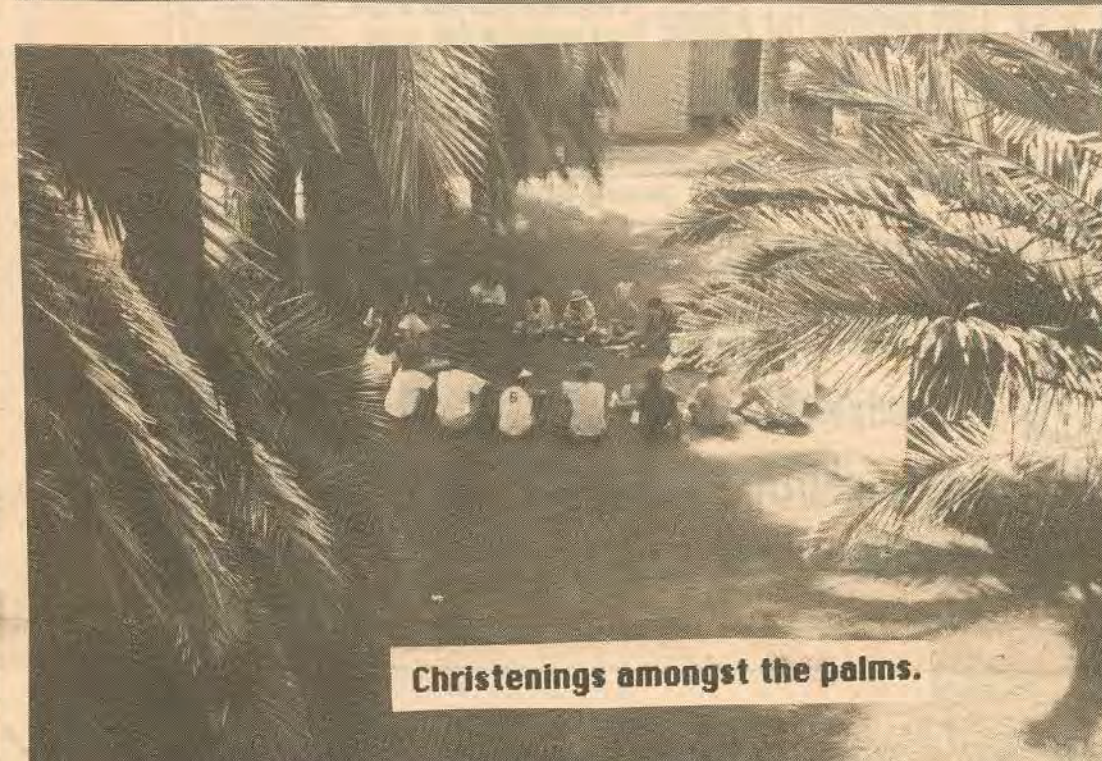
Hoopray! Hoopray!



Tors and Observers carving up the meat for the hungry hordes.



Christenings amongst the palms.



Wiseman's Books

The Campus Bookshop, located in Stable Square, can help you through those difficult "First Weeks". The Bookshop caters for all your student text, reference and general book needs. We also have a comprehensive range of stationery, including student diaries. The Bookshop offers a 10% discount on all books paid for by cash and cheques and a 5% discount with payment by credit card when you present your student I.D. Any problems regarding books, contact Cheryl in the bookshop.

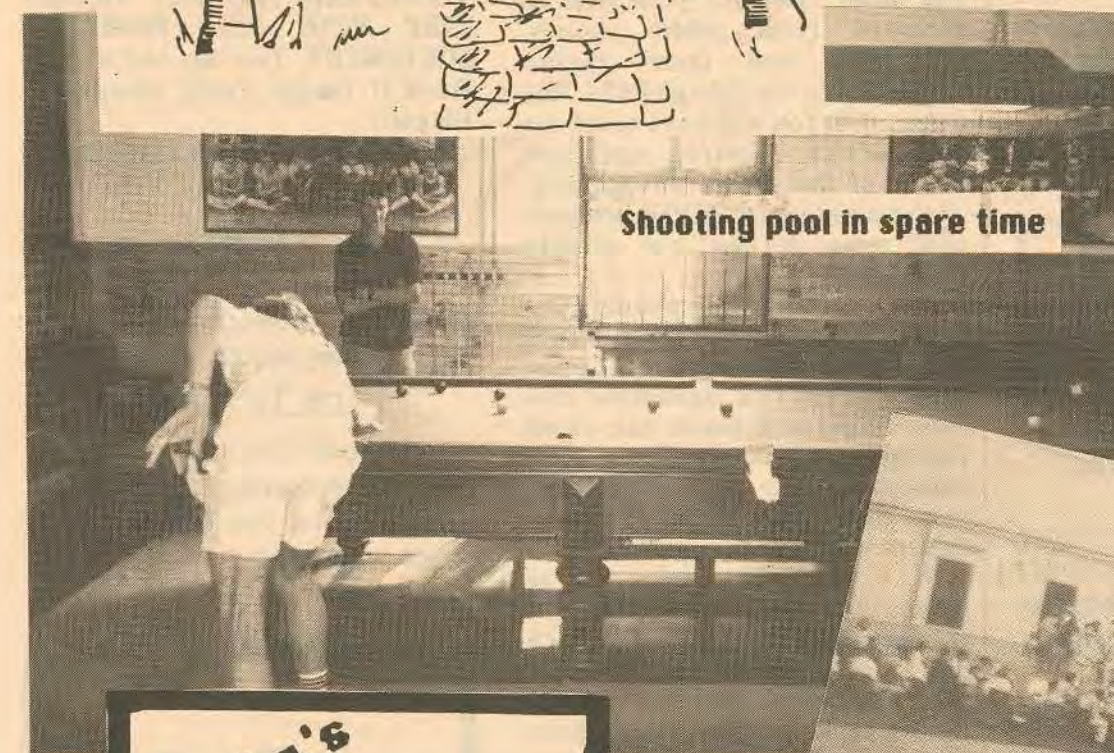
HOURS: 9.00 AM - 5.00 PM MONDAY TO FRIDAY



HAWKESBURY AGRICULTURAL COLLEGE



Shooting pool in spare time

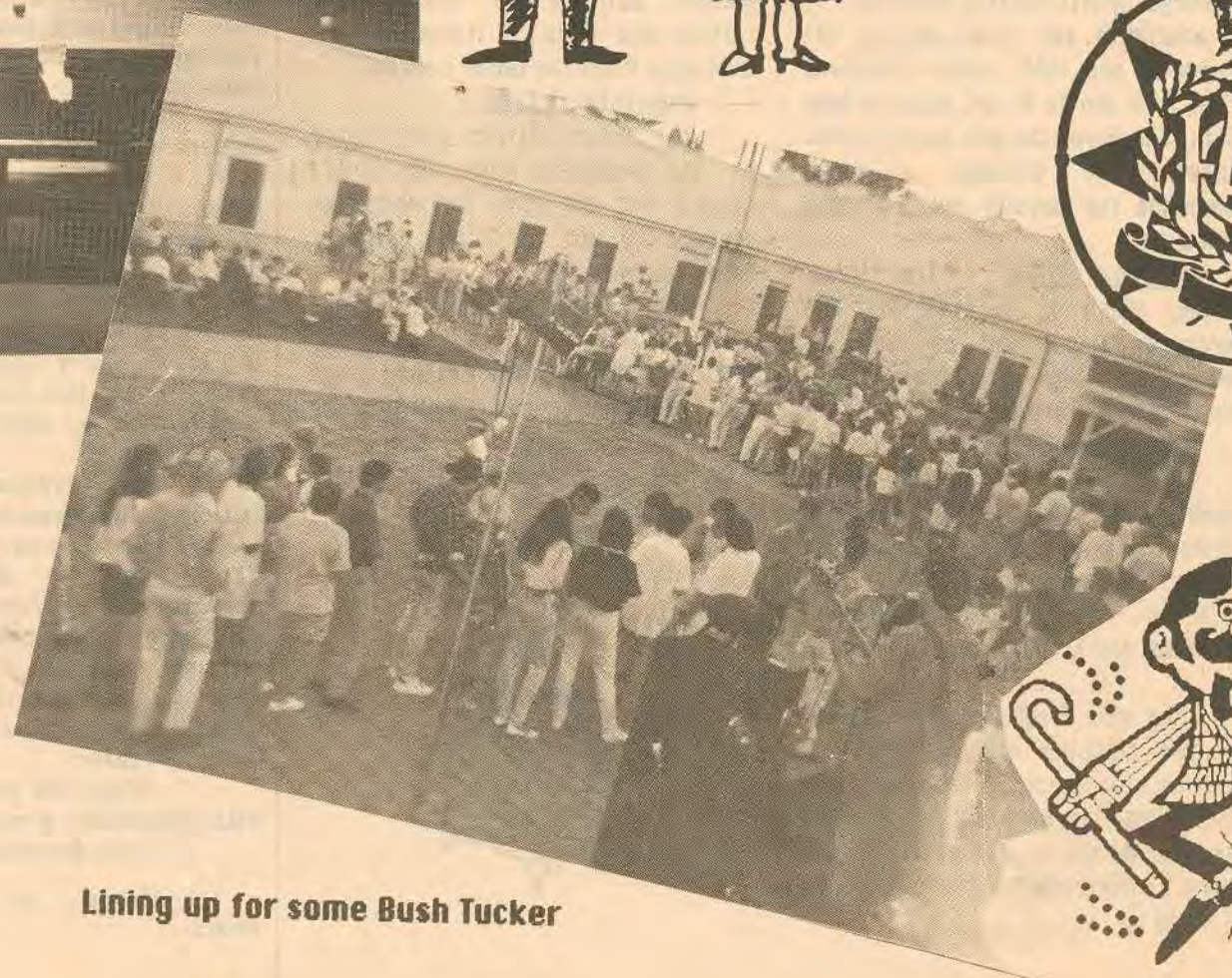


Elisha's Chocolates, Confectionery and Gifts

- * Continental and Australian Hand-made chocolates.
- * Large selection of confectionery.
- * Gifts to suit all occasions.

Shop 5, Civic Arcade,
225 Windsor Street,
Richmond.
(043) 78-3134

Lining up for some Bush Tucker



SWIPE OUT



LATER ON...



FROM THE STUDENT HEALTH CENTRE

Welcome to the Hawkesbury Campus of the University of Western Sydney. We are a unique Medical Team of Doctors and Registered Nurses all with varied experience working together. Our aims are to help, support, care, listen and when necessary, suggest the correct direction for you to take.

For your convenience the Student Health Centre hours are as follows:-

11:00 to 15:00 hrs Monday to Thursday.
08:30 to 12:30 hrs Friday.

Our policy is to offer a friendly and confidential service with suggestions from students on ways in which we can enhance our services, always welcome. We take this opportunity of wishing you all a happy and successful stay on campus.

From the Medical Team at the Students Health Centre.

PHONE: (045) 70 1309

In the building opposite the Stable Square coffee shop
Bourke Street, Richmond 2753

	Doctor	Registered Nurse
Monday	12.00-2.30 - Danielle Poyzer	11.00-3.00 - Julia Fietz
Tuesday	12.00-2.30 - David Rankin	11.00-3.00 - Julia Fietz
Wednesday	12.00-2.30 - Margaret Stellingwerff	11.00-3.00 - Elizabeth Lee
Thursday	12.00-2.30 - Chris Bauer	11.00-3.00 - Julia Fietz
Friday	8.30-10.30 - Chris Bauer	8.00-12.00 - Elizabeth Lee

STUDENT HEALTH SERVICE

- Confidential medical advice
- First aid
- Sports medicine
- Sexual health care
- Dietary & nutritional advice
- Preventative medicine
- Bulk-billing available

University of Western Sydney - Hawkesbury

BURSARIES FOR STUDY IN NORWAY IN 1989/90

The Norwegian Government is offering bursaries for one year's residence at Norwegian folk high schools, or other non-specialist schools for young people.

The bursaries are tenable from 20 August 1989 to 15 May 1990 at folk high schools, and from 20 August 1989 to 20 June 1990 at ordinary high schools. At least one bursary will be made available to an Australian citizen.

At folk high schools young people learn life skills with no formal academic credits.

Bursaries cover meals and accommodation, book purchases, school excursions and some pocket money. Supplementary grants may be made to cover short study tours and/or short courses preceding or following the main course of study.

The cost of travel to and from Norway must normally be paid by the applicant. However, grants to cover part or all of the cost may be provided in special cases.

Applicants must be at least 18 years of age and under 35 years of age. Special consideration will be given to applications which document an active interest in social, cultural or humanitarian activities. Applicants should acquire a knowledge of the Norwegian language before entering the school.

Applications close on 15 March 1989 and application forms may be obtained from:

The Secretary
Department of Employment, Education and Training
(Norwegian Government Bursaries)
PO Box 826
WODEN ACT 2606

Inquiries: Mr G Shellshear (062) 83 7678

The TEN Commandments of SUCCESS

- 1. Speak to people:** There is nothing as nice as a cheerful greeting...
- 2. SMILE:** It takes 72 muscles to frown - only 14 to smile.....
- 3. Call people by name:** Everyone is pleased when you remember their name...
- 4. Be friendly & helpful:** and others will respond in like manner.
- 5. Speak & act** as if everything you do were a genuine pleasure.....
- 6. Be genuinely** interested in people.....
- 7. Be generous** with praise - cautious with criticism.....
- 8. Be considerate** with the feelings of others, it will be appreciated.....
- 9. Be thoughtful** of the opinions of others, there are 3 sides to any controversy - yours, the other persons & the right one.....
- 10. Be willing** to give service, what counts most in life is what we do for others....

We're making life easy for you on campus.



National Australia Bank has put banking right on the doorstep of your university or college. Over the years we have served the financial needs of thousands of students like you and we know how important it is to have a branch within easy reach of where you study.

Open an Everyday Savings Account with us and you'll have the added convenience of receiving a FlexiCard for use at any FlexiTeller (Automatic Teller Machine) around Australia. This allows you to get cash and do your banking when it suits you - even after hours.

If you need to borrow money for any study related purpose, our Student Loans are available now at competitive rates. You don't even have to bank with us to apply. You may borrow and repay the loan after your graduation.

We can also arrange for you to have Bankcard so you can keep a record of your purchases and establish a sound credit rating.

To find out more about our Student Financial Services please fill in the coupon below and visit your nearest branch. We're ready and waiting to make your college days free of financial worry.

Yes! I would like to receive information about student financial services so I can best plan my financial future.

Mr/Miss/
Mrs/Ms: _____
Surname First Name

Address: _____
Postcode: _____

Phone number: _____

Intended college/university: _____

Just drop this coupon into the National Australia Bank agency located in Stable Square.

Agency hours are 12.00pm to 10.00pm Mon-Fri.

TOGETHER
National Australia Bank

PARKING AND TRAFFIC REGULATIONS

Established by Council Pursuant to the By-Law, Chapter XII, Clause 113(b)

1. PREAMBLE

The Regulations, which are seen as being fair to all members of the College Community (students, staff and residential staff's families) and simple and easy to follow, are designed to ensure:

- 1.1 reasonable standards of traffic control and safety are maintained on campus; and
- 1.2 the preservation of College grounds by minimisation of damage due to vehicular traffic.

2. AUTHORITY

- 2.1 These regulations are established by the College Council under the provision of Clause 113(b) of the College By-Laws.
- 2.2 The Principal, on behalf of Council, is authorised to:
 - (a) determine those College staff members or categories of staff members who shall be deemed for the purposes of those regulations to be authorised persons;
 - (b) determine for the purposes of these regulations those areas of the College which are car parks and the categories of persons who may be permitted to park therein; and
 - (c) determine areas where a special maximum speed limit shall apply.
- 2.3 The determinations made by the Principal in 2.2 above shall be published in the official College publication 'INFO', in the Student Newspaper 'JUMBUNNA' and placed on the official College notice board.

3. DEFINITIONS

In these Regulations and for the purpose of these Regulations:

AUTHORISED PERSON means any member of the College staff authorised by the Principal in terms of Clause 2.2(a) above to implement these regulations.

SECURITY SECTION means that section of the College administration so designated.

MOTOR VEHICLE means any motor vehicle as defined under the Motor Traffic Act (NSW) 1909 as amended, and is to include a motor cycle or motor scooter.

ROADWAY means that formed portion (usually constructed of bitumen) normally used to carry traffic between any two points.

GRASSED AREAS means any area of ground covered by grass, but does not include any area specifically designated as a car park as set out later in these Rules.

CAR PARK means that formed area, normally surfaced in bitumen or road base, and specifically designated as such by the Principal.

STANDING means a vehicle is said to be standing for the purpose of these Rules when it is stationary only for that length of time sufficient to pick up or set down passengers at that point. That period is not to exceed two minutes.

PARKING for the purpose of these Rules means that a vehicle shall be deemed to be parking if it is stationary but not in the process of picking up or setting down passengers.

4. GENERAL

- 4.1 Any vehicle brought into College grounds is required to be driven, parked or managed in compliance with the College Parking and Traffic Regulations, and the person in charge of any vehicle is to carry out all reasonable directions of any authorised person.
- 4.2 The College accepts no responsibility for any damage caused to any vehicle whilst on the College grounds, whether moving or stationary; nor can it accept any responsibility for the loss or theft of any contents or accessories in or upon any vehicle.
- 4.3 The provision of the Motor Traffic Act, 1909, as amended, and its Regulations shall be used as the basis for determining traffic breaches.
- 4.4 The following general speed limits will apply to vehicles under all circumstances within the grounds of the College, and are the maximum applicable:
 - (a) Road speed limit - maximum 60 kph
 - (b) Car Parks limit - maximum 15 kph

These speed limits apply only where there is not special lower limit denoted by special maximum speed limit signs.
- 4.5 The following vehicles only are ordinarily permitted to enter the College grounds:
 - (a) Vehicles in the charge of staff and students of Hawkesbury Agricultural College;
 - (b) Vehicles of members of the public who have business with, or are attending meetings, or functions, held at this College;
 - (c) Vehicles making deliveries of goods ordered by the College and vehicles driven by contractors to the College;
 - (d) Vehicles picking up and setting down passengers.
- 4.6 All vehicles brought into College grounds by staff or students must be registered with Security, and consequently carry the relevant College identification sticker.
- 4.7 The person in control of any vehicle brought onto College grounds (as registered with Security) shall be entirely responsible for its operation whilst on those grounds, and, if required to do so by any 'Authorised Person' under these Regulations, forthwith supply the name and address together with sufficient particulars to identify positively any alternative operator of such vehicle on College grounds at any point in time.

5. REGISTRATION

- 5.1 It is a strict requirement that all students, resident and non-resident; all staff, whether permanent or part-time; and staff and students of affiliated institutions, register any and all vehicles in their control, driven or parked on College grounds with Security by completing a 'Registration Card', either before bringing a vehicle onto College grounds, or immediately after entering the grounds. The student or staff member concerned will be issued with an identification sticker which must be permanently and immediately affixed to the windscreen or vent window of the vehicle adjacent to the Department of Motor Transport registration label so as to be clearly visible to any person.

- 5.2 Failure by either student or staff to comply with the above requirements will constitute a condition in which the relevant vehicle is illegally on College grounds.

Vehicles located on campus not displaying the identification sticker will receive a warning advice requesting immediate registration with Security. Where this request is ignored and the vehicle continues to enter the campus, the owner of said vehicle will be held responsible for costs associated with DMT search, plus a penalty provided in Schedule 1 of these Regulations.

6. PARKING**General**

- (a) At all times parking is only permitted within established car parks as determined by the Principal. Parking in a car park other than that which is specifically allocated shall constitute an offence.
- (b) Vehicles are to be parked wholly within the parking spaces denoted by painted lines or other markings where these exist, and must not be parked so as to obstruct the free flow of traffic in car parks or access lanes.
- (c) Staff occupying cottages may park in the space allocated to that building for them.
- (d) Builders of other contractors to the College must park all vehicles wholly on the site allotted to them.

7. OFFENCES

- 7.1 Insofar as these Regulations apply to parking, the following is forbidden, and any breach constitutes an offence for which there is a penalty as in Schedule 1 of these Regulations.

- (a) Parking on roadways or access lanes;
- (b) Parking or standing on grassed areas;
- (c) Parking in a car park not designated for the vehicle;
- (d) Failing to park wholly within the painted space allotted;
- (e) Obstructing the free flow of traffic;
- (f) Failing to display a relevant identification sticker;
- (g) Parking at any time in the Fairy Circle;
- (h) Parking on roadway between Alexander Bruce and Horticulture;
- (i) Vehicle not registered with Security.

First offenders will be issued with a warning notice (by insertion under wiper blade). Subsequent offences will be subject to fines as provided in Schedule 1 of these Regulations.

- 7.2 Insofar as these Regulations apply to traffic control, the following constitutes an offence, for which there is a penalty as in Schedule 1 of these Regulations:

- (a) exceeding College speed limit;
- (b) failure to obey any displayed College traffic control sign;
- (c) driving in a reckless or dangerous manner;
- (d) driving under the influence of alcohol or drugs;
- (e) driving or turning on any grassed area;
- (f) failure to stop after an accident.

- 7.3 Failure to pay the College any amount determined as a penalty under these Regulations or to comply with any other conditions imposed under these Regulations as a penalty, will in itself constitute an offence for which a penalty is provided for in Schedule 1 of these Regulations.

- 7.4 Nothing in these Regulations shall inhibit the College taking action under the conduct and discipline provisions of the By-Law if it is so decided by the Principal.

8. EXEMPTIONS

A member of the staff of the College in charge of a College vehicle may park contrary to the Regulations if the nature of their special duties requires them so to do, e.g. Grounds staff, Security staff, Maintenance staff, Farm staff. That vehicle may only be parked contrary for so long as necessary to carry out that special duty.

9. APPEALS

As a result of any decision of an authorised person in respect of an alleged breach of these Regulations, there is a right of appeal to the Principal. This appeal is exercisable, in writing, within fourteen days from the date of service of the notice of the decision appealed against.

APPROVED BY COUNCIL
14TH OCTOBER 1985

Penalties for Infringe-
ment of Regulations and
Principal's Determinations in
next week's Jumbunna.



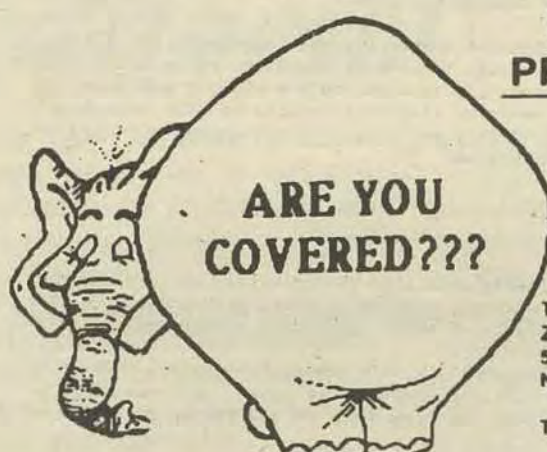
Rexines
332A Windsor Street, Richmond

* Fashions at reasonable prices.

* Winter stock arriving soon.

* Lay-bys welcome.

* 10% discount to H.A.C. students.
Please show I.D. cards.



STUDENT PROTECTION PLAN

POLICY NO. SPAA 13717-0
1988

ADMINISTERED BY:

THE ALEXANDER CONSULTING GROUP
ZURICH HOUSE
5 BLUE STREET
NORTH SYDNEY N.S.W. 2060

TELEPHONE (02) 922 3811

DID YOU KNOW YOU PAID FOR ACCIDENT INSURANCE AT
ENROLMENT? DETAILS OF YOUR INSURANCE COVER ARE
LISTED BELOW.

STUDENTS ACCIDENT PROTECTION PROGRAMME

HAWKESBURY AGRICULTURAL COLLEGE

There is no doubt that modern living has increased our daily exposure to accidents.

ACCIDENTS DO HAPPEN AND CAN INVOLVE YOU

Accidents which happen during your personal or scholastic activities could seriously impair the continuance of your education and impose a considerable financial burden.

This insurance package has been designed to help provide protection from the consequences of any accident.

1. WHEN AND WHERE AM I COVERED ?

24 hours a day, 365 days a year whilst as a registered student of the Hawkesbury Agricultural College - covers the majority of every day activities including most sports

2. WHAT ARE THE BENEFITS ?

The scale shown on the facing page shows the benefits payable for the specified injuries.

3. WHAT ARE THE EXCLUSIONS ?

Because this plan provides benefits to a large number of people as economically as possible the following logical exclusions are made :

Suicide; Drugs; Hang Gliding; Parachuting; Scuba Diving; Flying as a Pilot or Crew Member; Driving or riding in any kind of race; Service in the Armed Forces; Childbirth or Pregnancy; Mountaineering; Rock Climbing; Snow Skiing - unless organised by and under the supervision of Hawkesbury Agricultural College.

The actual exclusion clauses are clearly set out in the Policy.

The Plan is underwritten by American Home Assurance Company Pty Ltd through the Alexander Consulting Group and is automatic for all registered students of the Hawkesbury Agricultural College.

PART A - CAPITAL SUM - ACCIDENT ONLY

1.	Death	20,000
2.	Permanent Total Disablement	75,000
3.	Permanent Paralysis	75,000
4.	Permanent Loss of sight - 2 eyes	75,000
5.	Permanent Loss of sight - 1 eye	100,000
6.	Permanent Loss of use of 2 Limbs	75,000
7.	Permanent Loss of use of 1 Limb	75,000
8.	Permanent Insanity	
9.	Permanent Loss of Hearing	56,250
	(a) 2 Ears	11,250
	(b) 1 Ear	37,500
10.	Permanent Loss of use of Lens of 1 eye	
11.	Permanent Loss of use of Fingers and Thumb of one Hand	52,500
12.	Permanent Loss of use of 4 Fingers	30,000
13.	Permanent Loss of Thumb	22,500
	(a) 2 joints	11,250
	(b) 1 joint	
14.	Permanent Loss of use of Fingers	7,500
	(a) 3 joints	5,625
	(b) 2 joints	3,750
	(c) 1 joint	
15.	Permanent Loss of use of Toes	11,250
	(a) all one foot	3,750
	(b) great - 2 joints	2,250
	(c) great - 1 joint	750
	(d) other toes	

16.	Fractured Leg or Patella	7,500
17.	Shortening of Leg by 5cm	5,625
18.	Permanent disability not otherwise provided	up to 56,250

PART B - WEEKLY BENEFITS - ACCIDENT ONLY

19.	Temporary Total Disablement	100.00 per week
20.	Temporary Partial Disablement Payable for 52 weeks	37.50 per week

PART C - CASH IN HOSPITAL - ACCIDENT ONLY

21.	Whilst as an In-patient	50.00 per week
-----	-------------------------	----------------

PART D - OPTICAL/SPECTACLE - ACCIDENT ONLY

22.	Loss or damage	250.00
-----	----------------	--------

PART E - DENTAL

23.	Accidental damage	250.00
-----	-------------------	--------

GET THE JUMP ON YOUR NEXT
ACCIDENT AND ENSURE YOU
ARE ADEQUATELY COVERED.
CONTACT A REPUTABLE
INSURANCE BROKER FOR
MORE INFO.



Understatements

Lingerie



10% discount to all H.A.C. students
Show I.D. cards please.

**Shop 13, Orange Grove Mall,
Windsor Street, Richmond.**

Telephone: (045) 78-4586